



Swisspearl[®] Garden & Design

Style, diversity and quality for interiors and exteriors.

Enhancing living space.

Quality of life is our guiding principle.

Indoors and out. Aesthetic and functional. A comfortable atmosphere and a sense of well-being are basic human needs. Whether shrubs, summer flowers, small trees or design accessories, the design of private and public space is an expression of individual values, and at Swisspearl® Garden & Design the possibilities are virtually endless.

Swisspearl® Garden & Design products combine personal style with the highest level of functionality and distinctive materials for unique home interior design.

From Eternit to Swisspearl®

Eternit (Schweiz) AG has been doing what it does best for years. Ingenuity and expert knowledge allow us to create innovative and sustainable products for the building envelope, interior construction and garden from natural raw materials. This tradition lives on in Swisspearl®, which is fully focused on aesthetics, quality and responsibility towards people and the environment.

Quality & Function

Swisspearl® would not be Swisspearl® if the company did not intrinsically meet the highest quality standards. But it is the excellent functionality that makes every product the springboard for great ideas. Every product line for roofs, façades, construction and design is a modular and highly flexible system solution that is designed to protect façades and whole buildings for decades. Conservation and enhancement of value, both structurally and visually, are the guiding principles with which Swisspearl invigorates and promotes architecture and building culture.

Design & Aesthetics

From Max Bill to Le Corbusier, from Haefeli Moser Steiger to Herzog & de Meuron, Rafael Viñoly and Morphosis – Eternit and Swisspearl® have always inspired the great designers and share their drive for sophisticated design and exploring new possibilities.

Sustainability & Ecology

More than 95% of Swisspearl® is made up of natural raw materials from the Swiss mountains. It consists of cement, powdered limestone, air and water. This ensures efficient protection of raw-material resources and avoids unnecessary transportation. In addition, little energy is consumed in the manufacture of Swisspearl® panels compared to many other materials. Swisspearl® is 100% recyclable. And with a service life of at least 60 years, Swisspearl® improves both the ecological and the economic footprint of every building envelope. Or to put it another way: Only Swisspearl® is like Swisspearl®.

Tradition & Innovation

Then as now. Now as in the future. The timeless nature of the material and its quality have become the hallmark of Swisspearl®, something that future generations can also rely on. When developing its products, Swisspearl® is guided by its own exciting history, pioneering architecture and promising technologies. This makes Swisspearl® the sustainable material of today and tomorrow.







Oberblegisee in Braunwald, Glarus/Switzerland



Cover: Kyoto, Design: Michel Bruggmann
Photo above: Aladin, Design: Patrick Schöni

Contents

Planters	SOFTLINE	8
	CUSTOMLINE	14
	SQUARELINE	15
<hr/>		
Urban gardening		18
<hr/>		
Design		22
<hr/>		
Made in Switzerland		26
<hr/>		
Cement composite		28
<hr/>		
Colours		30
<hr/>		
Function and benefits		32
<hr/>		
Tips for plant care		34
<hr/>		
Possible combinations		36
<hr/>		
Service		38
<hr/>		

Swisspearl® planters

Elegant form, frost-proof, plant-friendly.







Page 6 and 7: Osaka 106, Design: Michel Bruggmann
Photo above: Sushi, Design: Sternform

Swisspearl® SOFTLINE

Multifaceted aesthetics.

Aesthetics has a name when it comes to plants: SOFTLINE. The impressive series of planters encompasses a diverse range of models and shapes, and makes it possible to individually design a terrace, a balcony or an interior. Whether high or low, round or angular – SOFTLINE is an exclusive collection of planters that caters to all tastes and fits into any space.

Features

Models

Many models available in different formats

Colours

STANDARD colours as well as all colours
À LA CARTE from the RAL collection





Swisspearl® SOFTLINE

Designed to thrill – today and tomorrow.

Starting with the idea through to the prototypes all the way to the final planter – close cooperation between Eternit (Schweiz) AG and product designers has a long tradition that continues to the present day. Behind all SOFTLINE planters are designers and their personal passion for the material. Every single planter is made by hand and signed by its creator. Swisspearl® SOFTLINE is thus a stylish expression of personality and originality.





Ginko, Design: Philippe Cramer

Swisspearl® SOFTLINE

Shaped for eternity.

SOFTLINE is immune to snow and frost. Swisspearl® cement composite has been used as a permanent material for roof and façade cladding for many years. Which is why Swisspearl® planters offer the best possible protection against damage when temperatures are low.

Good to know: with a frost guarantee of 10 years, Swisspearl® ensures that the functionality of the planters is long-lasting.



14 Swisspearl® CUSTOMLINE

Tailor-made solutions.

The Swisspearl® CUSTOMLINE planter series offers a high level of flexibility to meet almost any custom design requirement. Swisspearl® LARGO panels are cut to size to make large and small planters that can also be used as screens and partitions. An optional water storage tank can also be integrated to help water the shrubs and flowers.

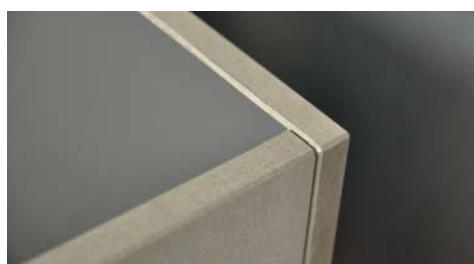
Features

Models

Freely selectable panel width and length
up to a maximum of 2500×2500×100 mm

Colours

STANDARD colours as well as all colours
À LA CARTE from the RAL collection



Swisspearl® SQUARELINE

Design with a few rough edges.

90 degrees in three dimensions. Its elementary form makes SQUARELINE a universal building block for design. Square or rectangular, the simple geometry of these planters creates an exciting contrast to the plants they hold. The highly compact panels are infused with colour and can be perfectly combined with Swisspearl® façade cladding.



Features

Models

Two models are available in different formats

Colours

Infused with colour and available in six colours



Handwritten graffiti in black ink at the top of the wall, featuring stylized, abstract shapes and lines.

Handwritten graffiti in green ink on the wall, including the word "CUSPORT" and other stylized characters.

Handwritten graffiti on a white roller door, featuring the word "ROCK" in red, "ROCK" in black, and "ROCK" in red below it.

Vertical handwritten graffiti on the right side of the wall, including the word "FIRIS" and other stylized characters.





Swisspearl® Urban gardening
Harvest in the place that you eat.



Page 14, 15 and photo above: Landing, Design: Chris Kabel

Swisspearl® Urban gardening

Vegetables from your own balcony.

Who says you can't garden in the city? The Swisspearl® planters come in different shapes and sizes and there is always the right one to fit in any space and make balconies and terraces into a bountiful vegetable garden in no time. From tomatoes and aubergines to parsley and basil all the way to decorative flowers: your plants are happy with Swisspearl®. And thanks to their frost resistance and breathable materials, Swisspearl® planters guarantee an abundant harvest.



Features

Models

All planter series can be used. Particularly suitable are LANDING or, if space is tight, BALCONIA, CONFETTI and DELTA 25.

Colours

STANDARD colours as well as all colours À LA CARTE from the RAL collection





Swisspearl® Design

Elegant down to the smallest detail.



22 Swisspearl® Furniture and accessories

Stylish living.

For the interior and exterior: Thanks to timeless design, Swisspearl® Furniture and accessories give every living space a welcoming, personal touch. The pieces, conceptualised by designers and made by hand, exude an incomparable simplicity. The interplay with the consistent quality and unique look and feel lays the foundation for design classics.

Features

Models

Large selection of exclusive design pieces available

Colours

STANDARD colours as well as all colours À LA CARTE from the RAL collection





Pages 18 and 19: Trash Cube, Design: Nicolas Le Moigne
Photo above: Tetris, Design: Fries/Zumbühl

24 Swisspearl® Furniture and accessories

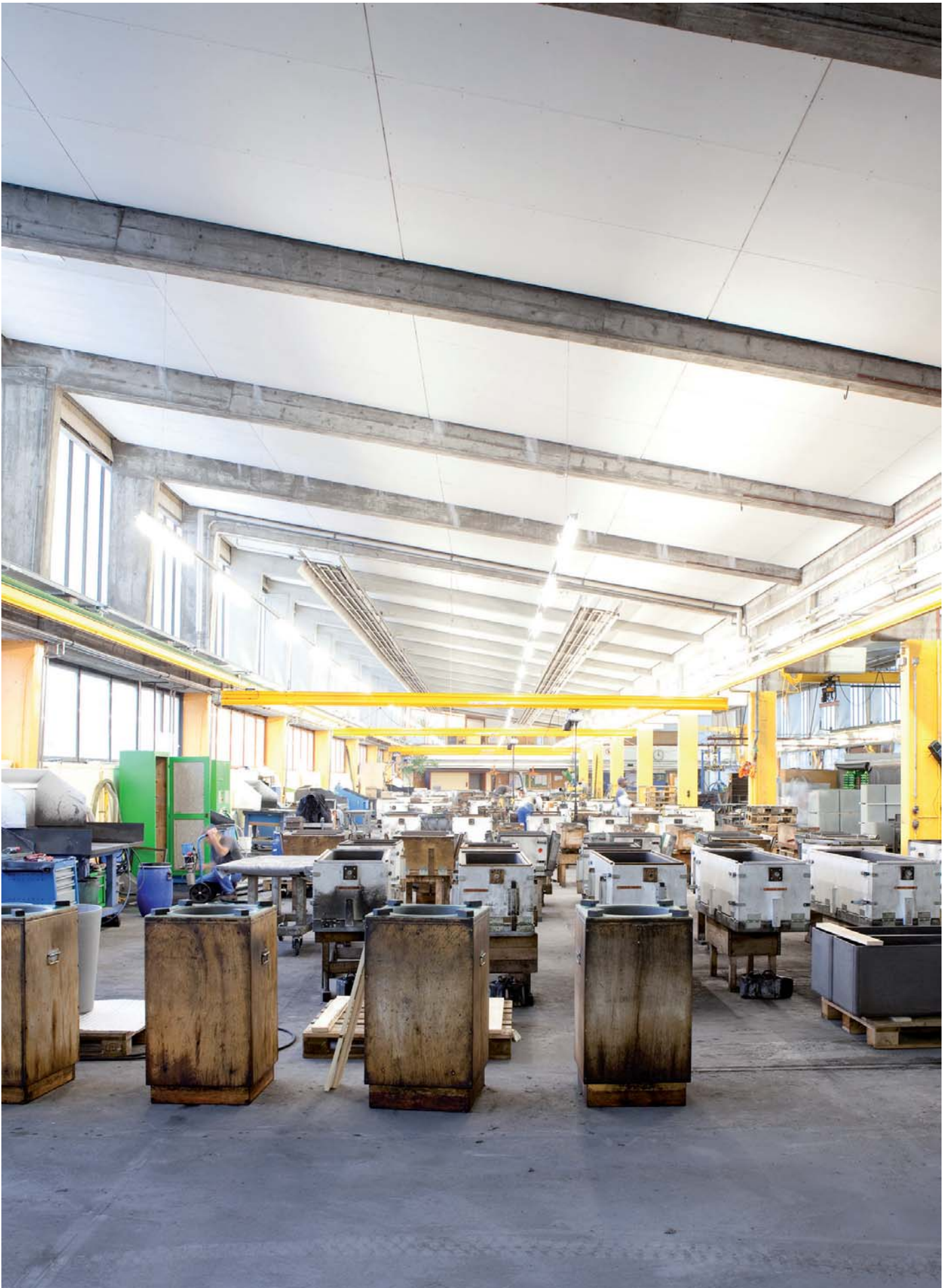
Unrivalled materials.

Since Willy Guhl presented his beach chair more than 50 years ago, time and again designers have explored the design potential of cement composite. It's clear, the material is more in demand than ever before. Whether the Tetris bookshelf, the Trash Cube stool or the Birdy bird house, the Swisspearl® Design collection is the best evidence of its popularity.





Guhl, Design: Willy Guhl



Payerne hand-moulding workshop

Made in Switzerland

Beautifully crafted by hand

Cut, pounded, smoothed, flattened: every Swisspearl® planter and design piece is made by hand in Switzerland. In Payerne (VD), the creators mould the garden and design products from the Swisspearl® material with a lot of expertise and delicacy. When they're finished, they sign their name on the product label, making each planter and every design piece truly unique with a personal touch.





The material

The recipe for success.

51% cement, 2% recyclable synthetic fibres,
5% cellulose, 12% water, 30% air.

With expertise, precision and craftsmanship, these elements are transformed into one-of-a-kind planters and design pieces. Cement, cellulose and reinforcing fibres are mixed with water to produce a paste-like raw material. This is carefully rolled on rollers, cut, moulded into form, dried and dyed. Each step is monitored for quality. It is only when the material meets the highest standards in all aspects that it gets the name it deserves: Swisspearl®.

Swisspearl® cement composite has become an indispensable material in architecture today. You can feel its homogeneous materiality, its surface quality, when you hold it in your hand. You can see its unique character, its natural texture and the multifaceted colours adapted to the material.

30 Colours

Originality and diversity.

The Swisspearl® garden planters are available in a broad range of colours and therefore offer limitless diversity and originality. The carefully selected colour finishes underscore, each in its own way, the unmistakable material aesthetics, letting the material and colour fuse into a single entity.

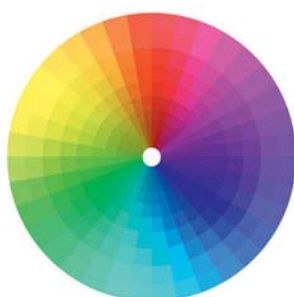
STANDARD

Natural grey or anthracite:
The STANDARD colours for
timeless elegant planters
and design pieces.



À la carte

In addition to the STANDARD
colours, Swisspearl® also offers
many special colours from the
RAL collection upon request.





Kyoto, Design: Michel Bruggmann

32 Function and benefits

Every aspect a benefit.



10-year frost guarantee.

The Swisspearl® material is resistant to even the lowest temperatures. Swisspearl® planters are therefore immune to snow, frost and raw weather conditions.



Moisture-regulating

Swisspearl® is a breathable material that automatically regulates moisture. All planters also have drainage openings on the bottom so that water can flow out.



Colour- and UV-resistant

The surface coating of the Swisspearl® planters and design pieces are colour- and UV-resistant, thus ensuring their timeless elegance.



Plant-friendly

The roots of the plants are well protected against frost thanks to the high soil volume. It's no surprise that plants flourish and blossom especially well and for such a long time in Swisspearl® planters.



Eco-friendly from start to finish

The low energy needed for production and their long life span make Swisspearl® garden planters the epitome of sustainability. The material is also 100% biodegradable.



Design diversity

Swisspearl® uniquely combines functionality with aesthetic expressiveness. The unique interplay between attractive planters and diverse plant designs always meets the highest aesthetic standards.



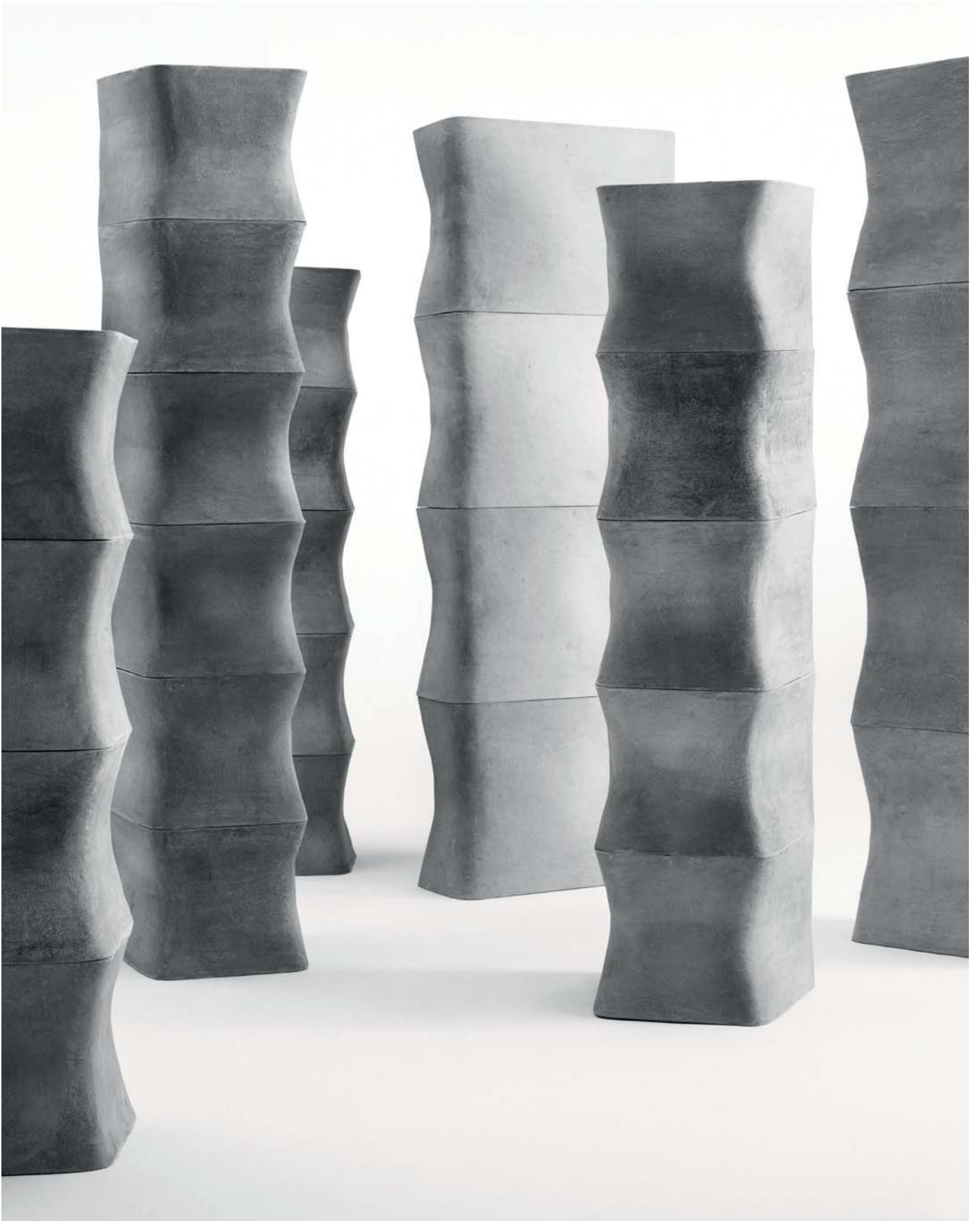
Combinable

The Swisspearl® garden planters can be perfectly combined with Swisspearl® façade panels: All planters are available in STANDARD colours as well as in all colours in the RAL collection.



Long life span

Long-lasting enjoyment with Swisspearl® garden and design products: the planters and design pieces are extremely resistant and built to last.



Ecal stool, Design: Ecal/Nicolas Le Moigne



Delta, Design: Eternit (Schweiz) AG

Tips for plant care

Professional care for your plants and garden.

Watering. Swisspearl® is a breathable material that automatically regulates moisture. All the planters have drainage openings on the bottom, which should be kept free so that water can flow out and does not freeze in winter. This problem is easily solved by placing a shard of pottery above the drainage hole. Some of the large planters have a water storage tank and overflow prevention rim, which considerably reduces the need to water.

The ideal place. Choose a suitable location for each plant with the right lighting and temperature and a level surface. You can compensate for uneven spots using underlays. Indoor planters should ideally be placed on mats to prevent water from damaging the floor.

Perfect layering. To prevent moisture from building up, one third of the planter is filled with expanded clay or coarse pebbles. This is followed by a water-permeable fleece mat. Place the plant on the mat and fill the planter with soil. A rim at the top of approx. 5 cm prevents water from overflowing.

Re-potting. A plant needs fresh soil every couple of years – ideally in spring. Lift the entire plant along with its roots out of the planter. Put the plant into an empty planter and fill it with fresh soil.

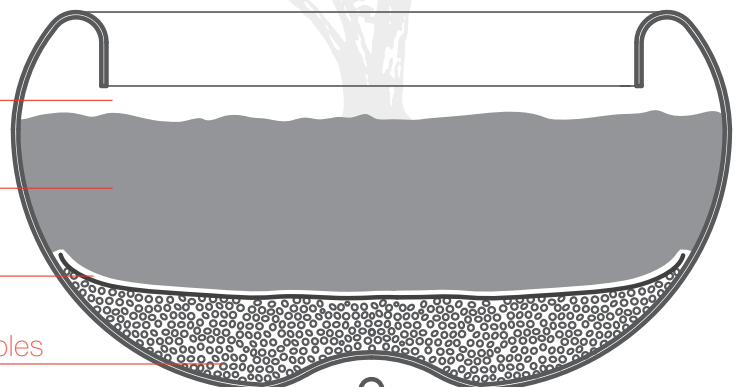
Protected against the cold. The roots of the plants are well protected against frost thanks to the high soil volume. If you want to give the plants extra protection in winter, only use fleece or natural materials, never plastic covers. These can leave permanent white spots.

5 cm rim

Soil substrate

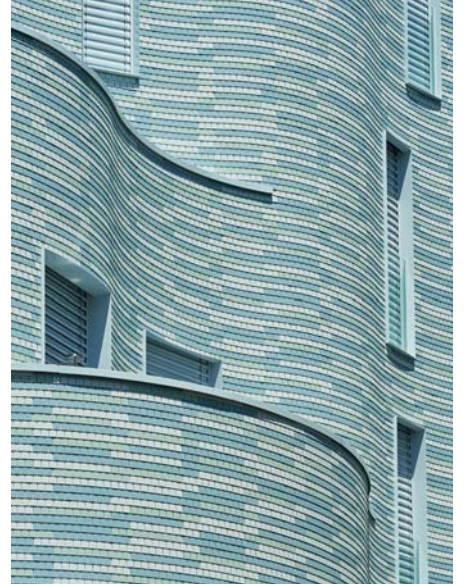
Water-permeable fleece

1/3 Expanded clay or coarse pebbles

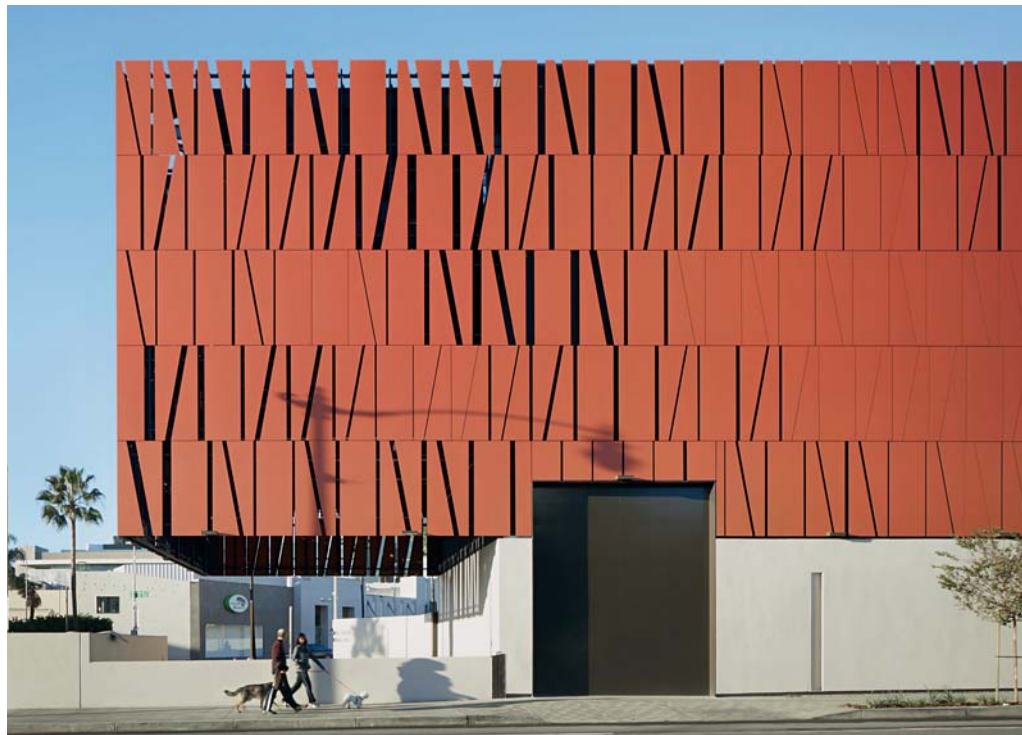




Federal Building, San Francisco/USA
Architecture: Morphosis, San Francisco



Headquarters, Einsiedeln/Switzerland
Architecture: Unger & Treina AG, Zurich



Public Building, Beverly Hills/USA
Architecture: SPF: Architects, Culver City

Possible combinations

One material. Endless variations.

Swisspearl® isn't just for your garden. The excellent characteristics of the material are predestined for aesthetic use on façades, complex roof solutions or sophisticated interior design. Its durability, materiality and versatility make Swisspearl® today's universal material par excellence.



Multi-family house, Fruthwilen/Switzerland
Architecture: AIR architects, Kreuzlingen



Single-family home, Marsens/Switzerland,
Architecture: André Repond SA, Charmey





Payerne hand-moulding workshop

There for you

Eternit (Schweiz) AG's comprehensive offering of services and advice allows it to respond to the different needs of builders, roofers, façade builders, architects and planners in order to jointly develop informed solutions. Sharing knowledge plays a key role here. The first courses for roofers were run at the Niederurnen plant as early as 1920. Today, these courses are part of the training for all building envelope trades. Moreover, Eternit (Schweiz) AG supports its customers with comprehensive specialist advice, detailed documentation, technical manuals and its customer magazine, which has become a renowned publication for planners and architects. Exhibitions at the Niederurnen and Payerne sites complete the offering and provide a hands-on impression of the versatile potential of the products and systems.

Please do not hesitate to contact us. One of our dedicated and knowledgeable staff will be happy to provide you with help and advice.

We look forward to your projects.



