

INSTRUCTIONS

LIGHTBOX HANGING MODULE 100 mm

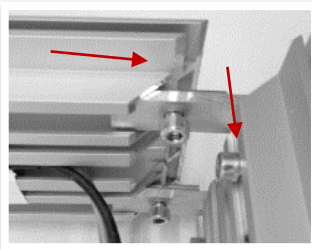
ITEMS DELIVERED

- 4 profile pieces with premounted power supply
- 8 locks with 16 screws and flat washers
- 1 allen key
- (ceiling hangers)
- (2 textiles with rubber lip all around)

YOU NEED ADDITIONALLY

- drill machine
- (dowels, screws)

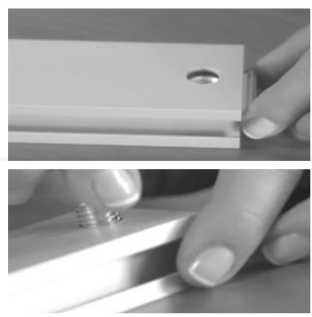
STEP 1



Connect corner

Take a profile piece and put the locks in the according rails in the profile. Put another profile piece on the locks. Connect 3 profile pieces in this way.

STEP 2



Insert stabilizer

This could also be done after the frame mounting, but it is easier if only 3 profiles are connected.

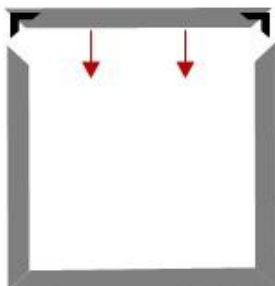
Prepare the stabilizers by inserting the locks in the stabilizer, so the holes of the lock and the stabilizer are above each other. Do this on both sides.



Now put the stabilizer in the frame while the lock is inserted in the inner slot of the profile. Then tighten the screws of the locks.

INSTRUCTIONS

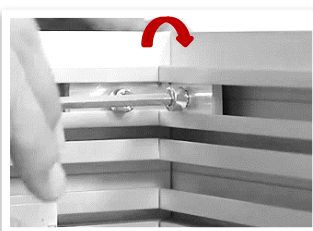
STEP 3



Connect all profiles and corners

Equip the last profile piece with the 2 left locks and put it on the 3 already mounted profiles.

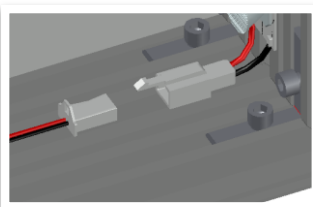
STEP 4



Tighten all locks and screws

Put the frame on an even ground and tighten all screws of the locks with the allen key.

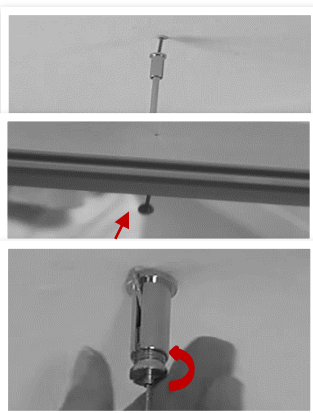
STEP 5



Connect electronic

Connect the electronic with the plug-and-play connectors in the corners.

STEP 6



Attach ceiling hanger (if ordered)

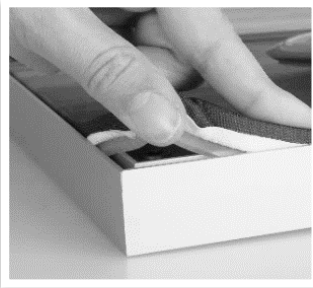
Adjustable ceiling hangers:

Fix the piece for the ceiling to the ceiling with a screw.

Pull the cable through the small hole in the upper profile so the ball at the end of the cable lies in the profile.

Pull the other end of the cable through the matching piece and screw this to the ceiling piece. Now you can adjust the height.

Hanger without cable: Put the slot nut under the hole in the upper profile and screw the ceiling hanger into it.

INSTRUCTIONS**STEP 7****Insert textile**

Insert the textile with the rubber lip into the according notch of the frame. Make sure that you hold the rubber lip right, since otherwise the textile will not fit in the frame: Fold the rubber lip slightly inwards (90°) and put it into the notch (see image).