

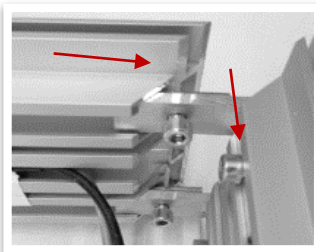
LIGHTBOX FREE STANDING MODULE 100 mm

ITEMS DELIVERED

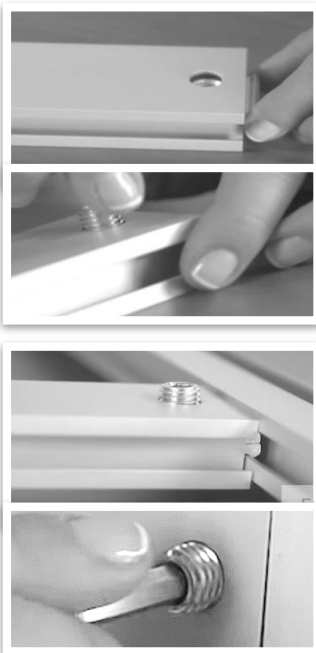
- 4 profile pieces with premounted power supply
- 8 locks with 16 screws and flat washers
- 1 allen key
- (feet)
- (2 textiles with rubber lip all around)

YOU NEED ADDITIONALLY

- drill machine
- (dowels, screws)

STEP 1**Connect corner**

Take a profile piece and put the locks in the according rails in the profile. Put another profile piece on the locks. Connect 3 profile pieces in this way.

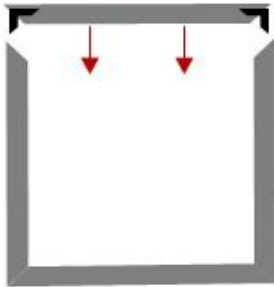
STEP 2**Insert stabilizer**

This could also be done after the frame mounting, but it is easier if only 3 profiles are connected. Prepare the stabilizers by inserting the locks in the stabilizer, so the holes of the lock and the stabilizer are above each other. Do this on both sides.

Now put the stabilizer in the frame while the lock is inserted in the inner slot of the profile. Then tighten the screws of the locks.

INSTRUCTIONS

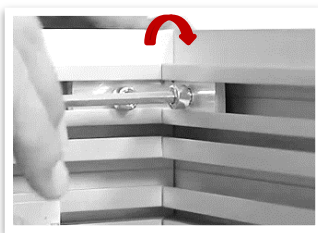
STEP 3



Connect all profiles and corners

Equip the last profile piece with the 2 left locks and put it on the 3 already mounted profiles.

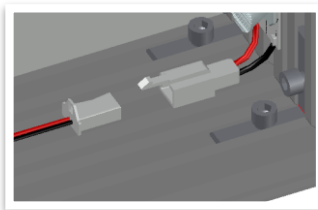
STEP 4



Tighten all locks and screws

Put the frame on an even ground and tighten all screws of the locks with the allen key.

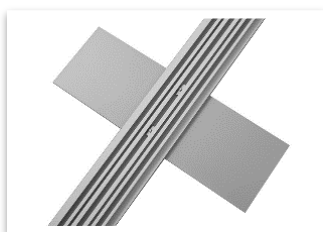
STEP 5



Connect electronic

Connect the electronic with the plug-and-play connectors in the corners.

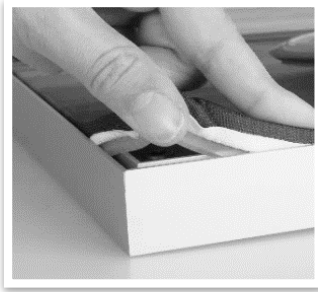
STEP 6



Attach feet (if ordered)

Place the foot in front of the holes in the profile. Put the screw through the hole and fix it with the slot nut. Tighten up the screw with the allen key.

STEP 7

**Insert textile**

Insert the textile with the rubber lip into the according notch of the frame. Make sure that you hold the rubber lip right, since otherwise the textile will not fit in the frame: Fold the rubber lip slightly inwards (90°) and put it into the notch (see image).