

FRANKLY
AMSTERDAM





MOVE SLOW

Available as	Rug, wall-to-wall, (stair) runner
Design	Felix Diener & Frankly Amsterdam
Size	Any size possible
Weight	6000 gr/m ²
Height	16 mm (standard) or custom height
Technique	Hand tufted
Colors	8 Standard + 110 uni + any custom color
Color design	Christiane Müller
Material	100% Eucalyptus
Advantages	+ any size, pattern and shape possible + choose your own color (mix or uni) out of 110 uni colors (see Eucalyptus color box) + custom colors can be lab-dyed on request (ask about the terms and possibilities) + suitable for residential as well as soft contract

Move Slow is a gorgeous rug, hand tufted with 16 mm high, thin Eucalyptus yarn exclusively. The simplicity of the rug emphasizes the beauty of this incredible yarn with its elegant nonchalance, secretly making it our personal favorite.

When used, this rug has a subtle cloudlike effect. In addition to the 8 colors in our standard collection, we can provide you with 110 other colors to choose from! The rugs are handmade to measure, in any shape, size, height or color you desire.

Eucalyptus yarn has great moisture-management. It absorbs the moisture completely and releases it to the outside, which makes the fibre naturally anti-bacterial. The yarn is appreciated for its smooth surface, softness and longlasting shine.



3501



3502



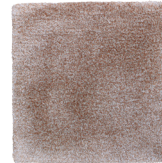
3503



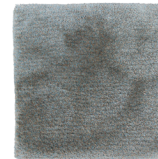
3504



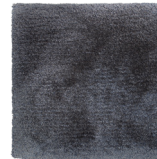
3505



3506



3507



3508

CARE INSTRUCTIONS

- We advise you to **vacuum** the rug once or twice a week with a normal (upright or cylinder) vacuum cleaner but without the brush or beater bar engaged. Rugs with a high pile need to be vacuumed even more often.
- Do not use a vacuumer with a rotating brush, this will damage the yarn.
- Rugs made from natural materials are subject to some **pilling** during the first few months. This is a common characteristic of natural cut fibers and will disappear after 3 or 4 months of normal use.
- A dry environment can result in extra pilling of the yarn. A **humidity** between 50-70% will benefit the lifecycle of your rug.
- In order to avoid '**regular use marks**', we advise you to turn the rug every once in a while.
- **Wet stains** need to be removed immediately, before the yarn absorbs the fluid. Absorb the stain using a strong absorbing paper (like kitchen paper). Do not, in any case, rub or put pressure on the rug when wet. This can damage the fibers and the structure of the rug.
- **Light stains** can safely be treated with JAMES cleaning agents, which have been successfully tested on our products. Please follow the instructions of the JAMES staindisc, also shown on our site. We can not guarantee safe use of cleaning agents by any other brand, since they have not been tested.

- Please do not use highly acidic cleaning agents to remove stains from your rug. This will cause discoloration of the yarn.
- In case of **heavy staining** or transferred dirt, we advise you to always have your rug drycleaned by a specialist in rug cleaning. Please state clearly that this rug needs to be cleaned without using water.
- When in **doubt**, please don't hesitate to contact us, or take a look on our website, www.frankly.amsterdam/careinstructions, for more information.

WARRANTY

- Frankly Amsterdam **guarantees** its rugs for 2 years of normal use.
- All our products are made with care. In case a **manufacturing defect** escaped our attention, please inform us within 14 days after delivery and leave the product unused.
- Small differences or **irregularities** in color, weft or size may occur. This is inherent to the use of natural fibers and has to be accepted when within normal commercial tolerances.
- Frankly Amsterdam will not accept any complaint if shading is concerned.

