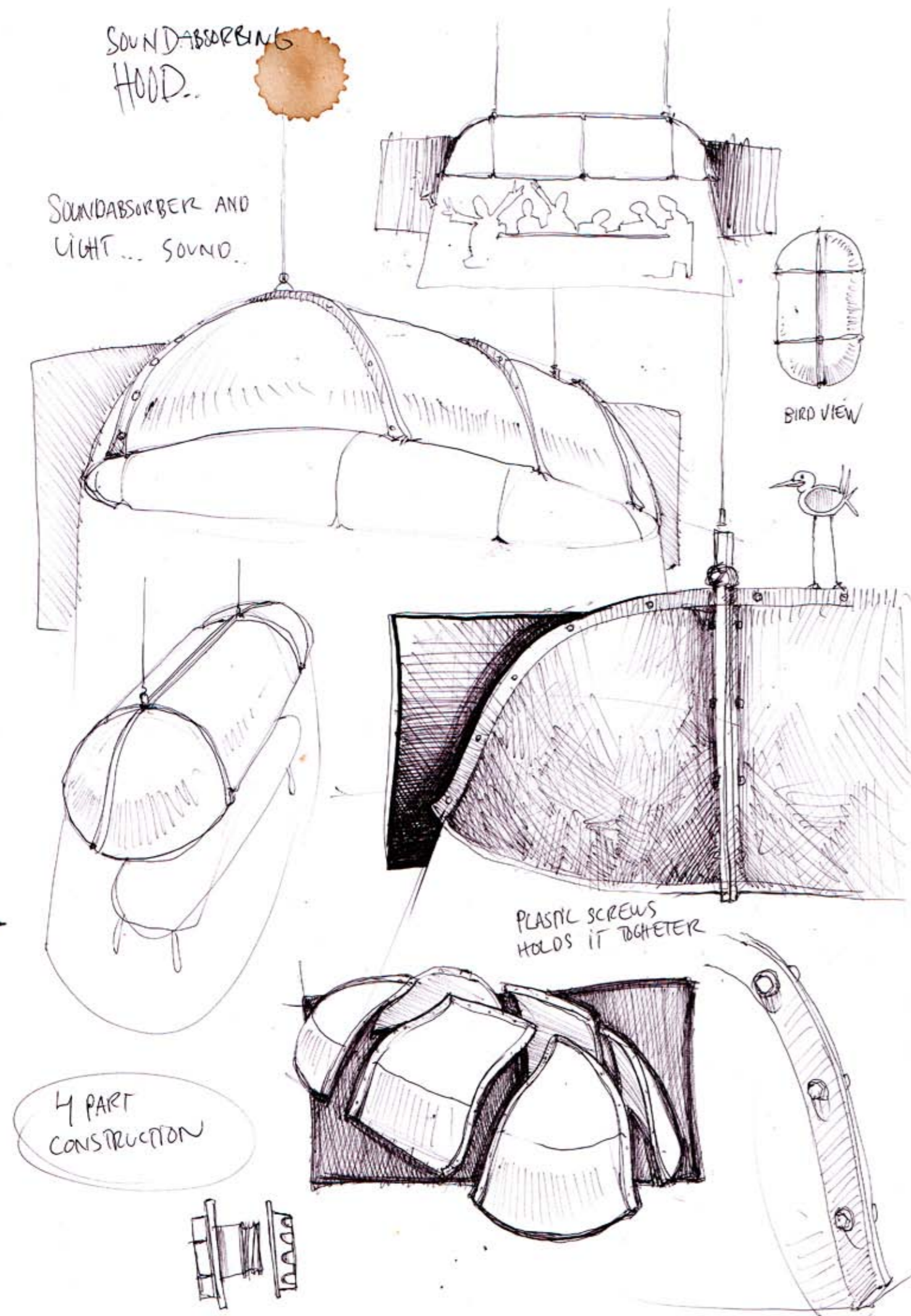


# Hood



**ateljé Lyktan**

MEMBER OF THE FAGERHULT GROUP



**"We came up with the idea for Hood when we moved to our new studio," says Petrus Palmér from Form Us With Love. "We needed a flexible light source and sound absorbent above our conference table as the studio is open-plan and with a very high ceiling."**

**Hood is an ideal solution for these open plan environments, functioning both as a light source and a sound barrier, helping to create a more intimate space in the contemporary office landscape. Its modular structure means that Hood can grow according to need. "It should be possible to expand Hood in all directions really," says Palmér.**



**Its modular structure  
means that Hood can grow  
according to need.**

## Technical details



Hood

Material	Shades of moulded polyester felt. Frame in lacquered structure aluminum. Diffuser in opal acrylic. Grey cable.
Installation	Suspended on 2.5 m wire. Adjustable wire suspension in height.
Connection	External dimming with 2.5 m grey cable 5x1 mm². ON/OFF with 2.5 m grey cable 3x1 mm². Halogen free cable is standard.
Colour	Black, dark grey, light grey, sand and red.
Other	Light unit with LED light source 3x8.3W/2760 lm included. Efficiency 30W, flux level 1653 lm, luminarie efficacy 55 lm/W, light colour 3000K, Ra 80 and light colour tolerance 5 SDCM.

Design by Form Us With Love



WxLxH (mm)		Efficiency	Black	Dark grey	Light grey	Sand	Red	Additional no. dim DALI
1200x1200x600		1x30W LED	209330	209340	209350	209360	209370	-402
1200x1800x600		2x30W LED	209331	209341	209351	209361	209371	-402
1200x2400x600		3x30W LED	209332	209342	209352	209362	209372	-402
1200x3000x600		4x30W LED	209333	209343	209353	209363	209373	-402
1800x1800x600		4x30W LED	209334	209344	209354	209364	209374	-402
1800x2400x600		6x30W LED	209335	209345	209355	209365	209375	-402
1800x3000x600		8x30W LED	209336	209346	209356	209366	209376	-402
Accessories	Dimensions			Art.no.				
Ceiling cup, grey	Ø100, terminal block 5x2,5 mm²			209393				

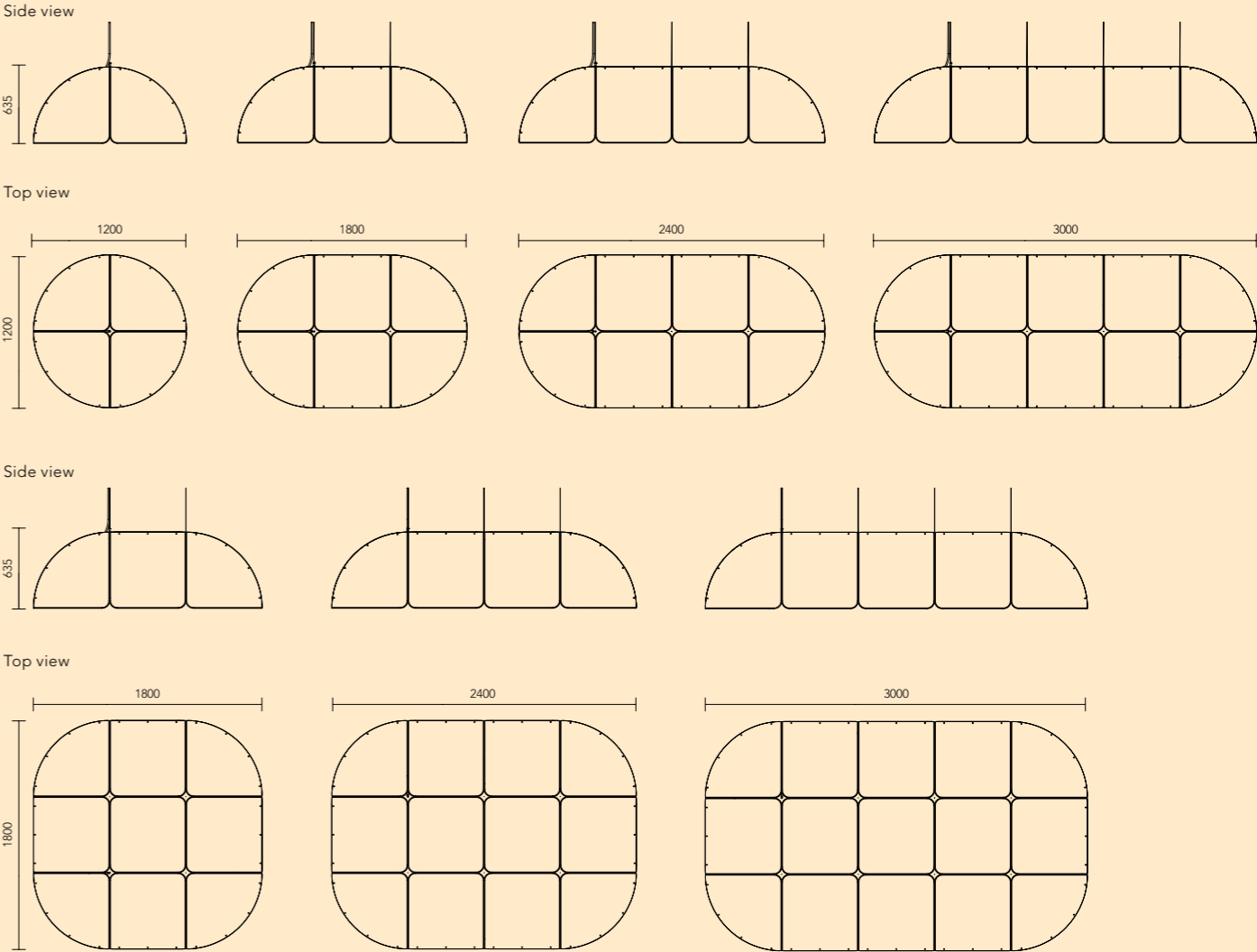
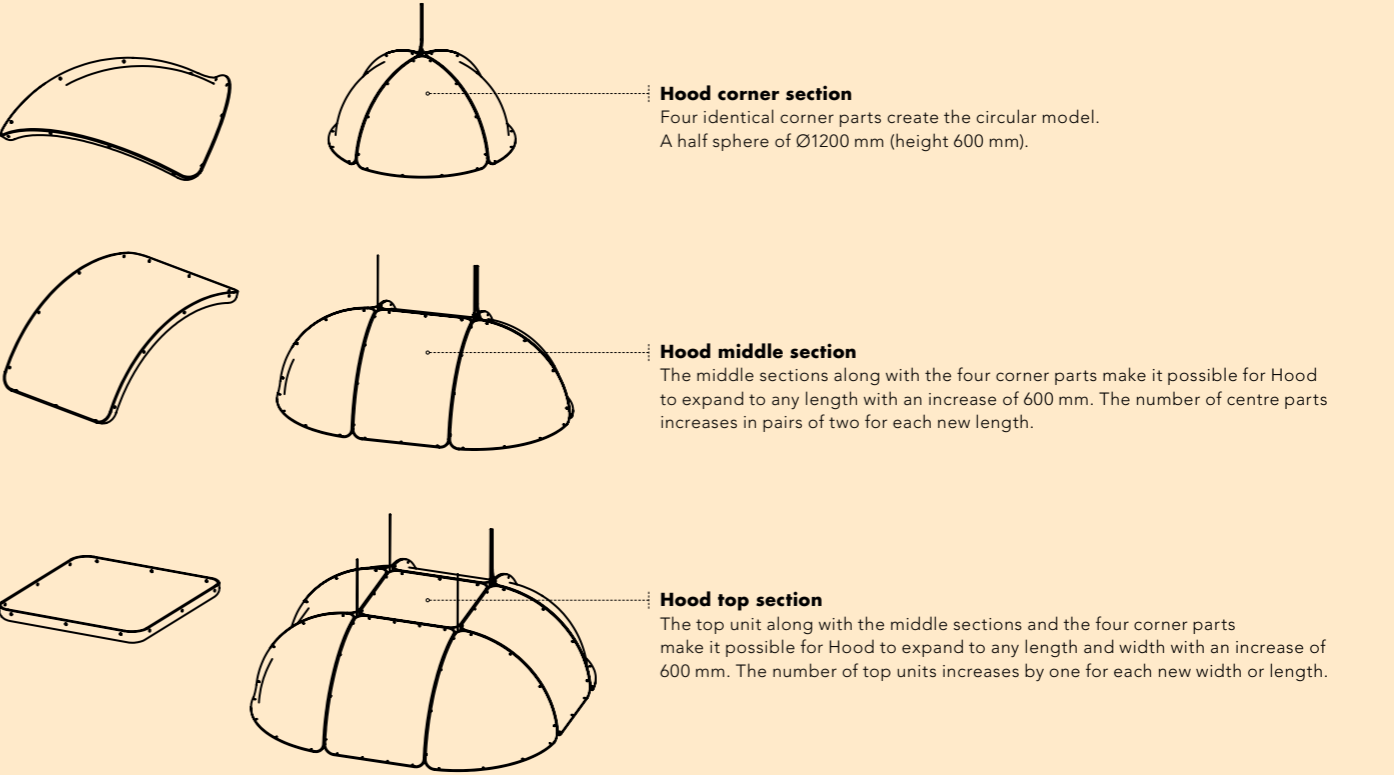


In model 1200x1800 there are two light units. In all models, there is a light unit in each suspension point. Light units are connected in one line and the power supply is via the first light unit in line.



Mounting of the screen sections is easily done with a single screw solution.

Hood consists of three different types of modules. Regardless of which model is to be constructed, four corner parts are always included. The middle and top sections allow expansion of Hood in the length and width.



**Hood is made up of three different types of modules in moulded polyester felt: corner, side and top panels, creating a structure that measures from 1200x1200 mm up to 1800x3000 mm at its biggest size. “In principle we should be able to expand on the size of Hood infinitely,” says ateljé Lyktan’s design engineer Cecilia Fahlberg.**

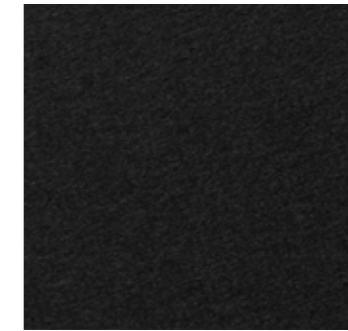
**Form Us With Love initially developed Hood with ateljé Lyktan’s made-to-measure service Ateljén (or “the studio”) as a one-off piece, but after experimenting with Hood’s potential it was clear that it was going to hold a unique spot in the market place. “It creates an illuminated island within any open space,” says Palmér.**



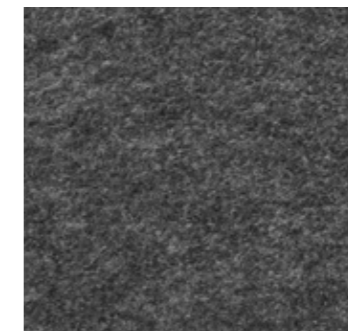
Red



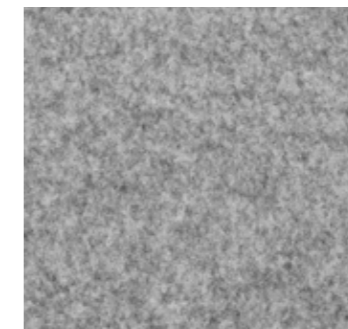
Sand



Black



Dark grey



Light grey

#### Head office

Fyrvaktaregatan 7, SE-296 81 Åhus  
Phone: +46 (0)44 28 98 00 Fax: +46 (0)44 28 98 38  
E-mail: [info@ateljje-lyktan.se](mailto:info@ateljje-lyktan.se)

#### Offices

Stockholm  
Planiavägen 1, SE-131 54 Nacka

Göteborg  
Kyrkogatan 17, SE-411 15 Göteborg

Malmö  
Slussgatan 10, SE-211 30 Malmö

Boden  
Pontonjärvägen 10, SE-961 43 Boden

[www.ateljje-lyktan.se](http://www.ateljje-lyktan.se)