

RS-5050 Chrome

3D malleable PVC film with a chrome look

As from now make the most impressive creations with a life-like metal look. Simply install our exterior quality RS-505 Chrome film on any smooth surface. Roll width: 4' (122 cm)



LETTERING & SIGNMAKING

Add metal effects to exterior advertising on buildings. Create chrome illuminated signs, channel letters and sign boards in no time. **RS-5050 Chrome** is easy to cut and weed. It can even be worked into channels and swages of company vehicles.

**please follow installation instructions on the reverse of this leaflet*



INDOOR & OUTDOOR DECORATION

Create exclusive interiors and exhibition stands with lettering and design by **RS-5050 Chrome**. **RS-5050 Chrome** is an exterior quality PVC film with a life span of 3 years which makes it suitable for all kinds of promotional applications.

**please follow installation instructions on the reverse of this leaflet*



CAR- & VEHICLE WRAPPING

Change any car into a spectacular futuristic chrome object. **RS-5050 Chrome** can be formed around the shapes of the surface*.

**please follow installation instructions on the reverse of this leaflet*

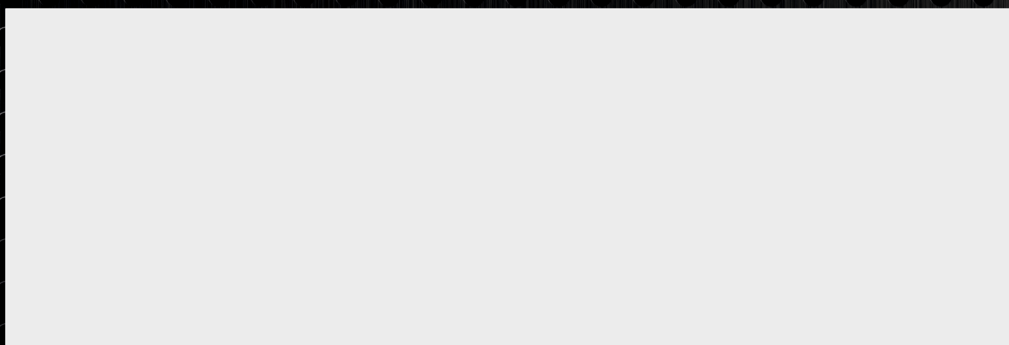


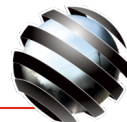
AUTOMOTIVE & OEM SOLUTIONS

Accentuate car and motorcycle parts by covering them with **RS-5050 Chrome**. Door jambs, rubber strips, roof rails and radiator grills add a special chrome look to any vehicle.

**please follow installation instructions on the reverse of this leaflet*

- high quality base film
- chrome effect top layer
- scratch resistant
- easy weeding, even small letters
- strong and malleable
- for use in channels and grooves
- thickness: 4 mil (100 µ)
- estimated durability: up to 3 years
- **Roll dimensions: 122cm x 50m**





Metallized Outdoor Pressure Sensitive Film

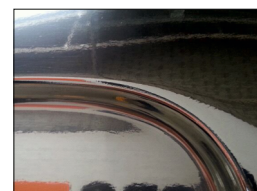
PRODUCT DESCRIPTION

RealSteel Series RS-5050 Chrome is a unique PVC film with a chrome top layer. Suited for indoor and outdoor use. The film has a medium-tack, permanent pressure-sensitive adhesive and gives every creative mind the freedom to design as it pleases. RealSteel Series RS-5050 Chrome is designed to meet the marking requirements and specifications of the transportation, vending, and automotive industries. The film

provides superior conformability around rivets, curves, and contours. Excellent for cutting on a plotter. RealSteel Series RS-5050 Chrome is resistant against weathering, sea water, petrol, mild acids, etc. Perfectly suitable for outdoor applications and rated for outdoor durability up to 3 years.

AREAS OF USE

- Outdoor and Indoor signs for applications on cars, POP displays, vending machines, and architectural graphics.
- Markings for fleet, containers, farm equipment, and construction equipment.
- Decorations for railway car, bus, boat, and other recreational vehicles.
- Any kind of short term outdoor advertising, fascia boards, luminous signs, lettering, striping, columns, signs, etc.



PERFORMANCE AND PHYSICAL DATA OF THE FILM

PROPERTY	TYPICAL VALUE	PROPERTY	TYPICAL VALUE
SURFACE FINISH	High reflective laminated silver PVC film	ARTIFICIAL WEATHERING*	> 3 years
THICKNESS (including adhesive)	116 micron	SERVICE TEMPERATURE RANGE	-30°C to +70°C
TENSILE STRENGTH	>30 N/mm ²	DIMENSIONAL STABILITY	<1%
ELONGATION	>50%	ADHESION TO STEEL	20 min / 180°: 15N/25mm 24 hrs / 180° : 18N/25mm
SHELF LIFE	1 years from factory shipment	LINER	140grs PE coated kraft liner
APPLICATION TEMPERATURE RANGE	+10°C to +25°C optimum		

Standard Terms and Conditions Apply

* Equivalent to vertical exposure in Mid-European

IMPORANT NOTES

APPLICATION INSTRUCTIONS

- This film can be applied on any shape or form. Keep in mind that the Chrome top layer has its limitations. Too much stretching can cause some matte stretch marks. Visible cutted edges needs to be sealed.

STANDARD SIZES

- **Roll width:** 122cm
- **Roll length:** 50m

CONDITIONS OF SALE

The following is made in lieu of all warranties expressed or implied:

All statements, technical information and recommendations published by SOTT relating to the RealSteel Series are based on tests believed to be reliable and within the accuracy of the equipment used to obtain the specific values. Their accuracy or completeness is not guaranteed. SOTT makes no warranty with regard thereto. Seller's and manufacturer's only responsibility shall be to replace any quantity of the product proved defective. Seller and manufacturer shall not be liable for injury, loss or damage, direct or consequential, arising out of use or the inability to use the product. Nor shall seller or manufacturer be liable for any costs or expenses incurred in the processing or printing on the product. Before using, user shall determine the suitability of the product for its intended use. User assumes all risk and liability of every nature in connection therewith.

