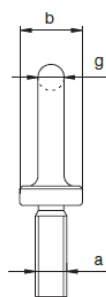
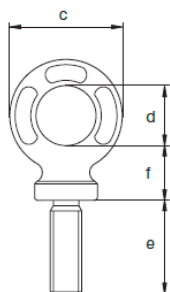


EXCEL® Stainless steel eye bolt length as DIN580



ALDINI



- Material : AISI 316L, grade 5
- Safety factor : MBL equals 5 x WLL
- Finish : polished
- Certification : 2.1 2.2 3.1 MPI^b CE

working load limit	diameter thread	diameter base	diameter eye outside	diameter eye inside	length	thickness base	diameter	weight each
t	a mm	b mm	c mm	d mm	e mm	f mm	g mm	kg
0.2	M 8 x 1.25	20	34	20	13	17	7	0.05
0.4	M10 x 1.50	20	38	22	17	19	8	0.07
0.6	M12 x 1.75	25	47	26	21	23	10	0.13
0.8	M14 x 2.00	30	57	29	27	28	14	0.24
1	M16 x 2.00	36	65	35	27	30	14	0.34
1.5	M18 x 2.50	36	65	35	30	30	14	0.35
2	M20 x 2.50	40	73	39	30	34	16	0.52
2.5	M22 x 2.50	42	82	44	35	38	19	0.71
3	M24 x 3.00	55	95	54	36	40	20	0.98