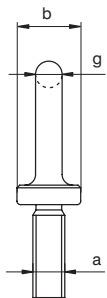
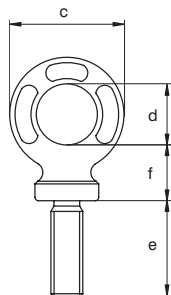


EXCEL®



ALDIN



EXCEL® Eye bolt length as DIN580, grade 8

- **Material** : alloy steel, grade 8, quenched and tempered
- **Safety factor** : MBL equals 5 x WLL
- **Finish** : painted red
- **Certification** : 2.1 2.2 3.1 MPI^b CE

working load limit	diameter thread	diameter base	diameter eye outside	diameter eye inside	length	thickness base	diameter	weight each
t	a mm	b mm	c mm	d mm	e mm	f mm	g mm	kg
0.2	M 6 x 1.00	20	34	20	13	17	7	0.05
0.4	M 8 x 1.25	20	34	20	13	17	7	0.05
0.7	M10 x 1.50	20	38	22	17	19	8	0.08
1	M12 x 1.75	25	47	26	21	23	10	0.13
1.2	M14 x 2.00	30	57	29	27	28	14	0.24
1.5	M16 x 2.00	36	64	35	27	30	14	0.34
2	M18 x 2.50	36	65	35	30	30	14	0.36
2.5	M20 x 2.50	40	73	39	30	34	16	0.52
3	M22 x 2.50	42	82	44	35	38	19	0.74
4	M24 x 3.00	55	95	54	36	40	20	0.99
5	M27 x 3.00	55	95	54	38	40	20	1.03
6	M30 x 3.50	60	108	59	45	49	24	1.66
7	M33 x 3.50	60	108	59	45	49	24	1.66
8	M36 x 4.00	65	118	67	54	45	25	2.01
9	M39 x 4.00	65	118	67	55	45	25	2.08
10	M42 x 4.50	70	139	79	63	56	31	3.37
15	M45 x 4.50	70	139	79	65	56	31	3.47
18	M48 x 5.00	95	181	97	68	68	43	7.17
20	M52 x 5.00	95	181	97	78	68	43	7.53
25	M56 x 5.50	95	181	97	78	68	43	7.52
30	M60 x 5.50	95	181	97	78	68	43	7.78
36	M64 x 6.00	95	181	97	90	68	43	8.42