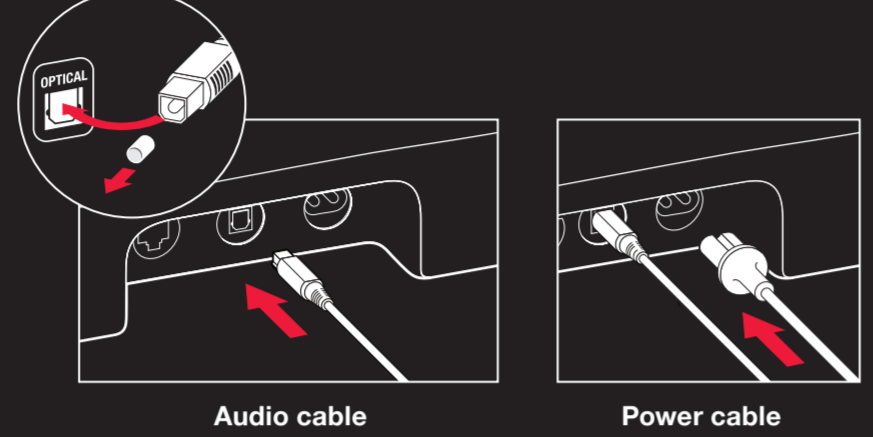


Check your TV connections

Take a look at your current setup

- A. If you have existing speakers and an audio receiver, disconnect them. You won't need them with PLAYBASE.
B. Make sure your streaming device, gaming console, DVD/Blu-ray player and cable box are all connected directly to your TV.

Quickstart Guide



Plug the cables into PLAYBASE

Audio cable
Remove the protective caps. Connect the cable into PLAYBASE's digital audio input, aligning it carefully.

Power cord
Push the power cord all the way into PLAYBASE's power port.

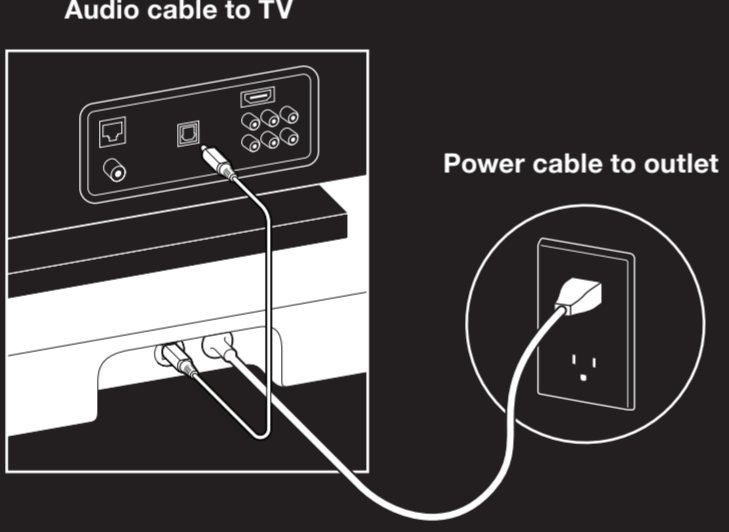
Note: The Ethernet cable is optional and only needed if you want to connect your PLAYBASE or a BOOST to your router...

Choose a location

- A. Under a TV
Lift your TV and put PLAYBASE under it with the Sonos logo facing front. Make sure your TV sits flat and is fully supported by PLAYBASE. TVs can be heavy - we recommend having someone help you lift it.
B. On a TV cabinet shelf
For the best sound, place PLAYBASE toward the front of the furniture but DON'T let it hang over the edge; allow 1-inch clearance on both sides.



Plug the cables into TV and power



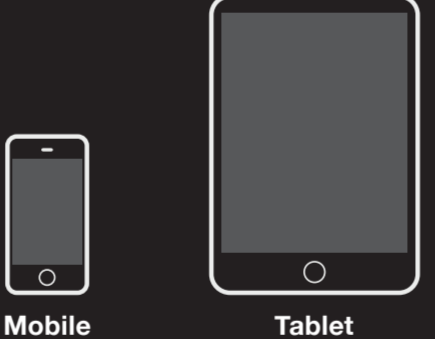
Audio cable
Connect the other end of the audio cable into your TV's digital audio output.

Power cord
Plug the power cord into a wall outlet.

Ask us

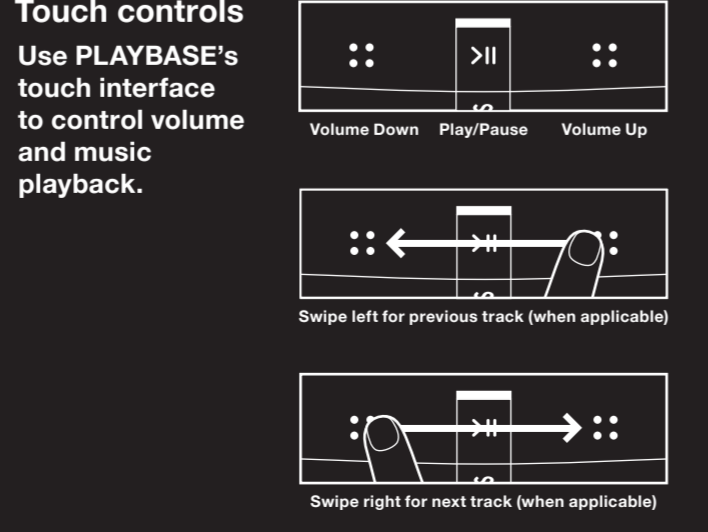
No question is too big or too small.

Website: Sonos.com/support
Email: support@sonos.com
Twitter: @SonosSupport
Product User Guides: Sonos.com/guides



Download from the app store on your device

Telephone
Australia 03 9374 0800
Austria 0800 291 623
Belgium 0800 38904
Brazil 0800 025 0827
Denmark 80251135
France 0800 910 769
Finland 0800917381
Germany 0800 000 5339
Italy 080 972444
Mexico 01 800 083 5513
Netherlands 0800 0234381
Norway 800 691 13
Singapore 8001013283
Spain 0917 482942
Sweden 0207 93593
Switzerland 0800 56 25 25
UK 0808 2346596
Europe (toll call) +49 (0) 1803 447000
US and Canada (English) 1 800 680 2345



Controls

TV remote
Use your TV remote to adjust volume. The Sonos app will help you get this working.



Sonos app
Use the Sonos app on your mobile device to control volume, activate speech enhancement and night mode, and play music.



"Made for iPod," "Made for iPhone," and "Made for iPad" mean that an electronic accessory has been designed to connect specifically to iPod, iPhone, or iPad, respectively...



Check your TV connections
Take a look at your current setup
A. If you have existing speakers and an audio receiver, disconnect them. You won't need them with PLAYBASE.
B. Make sure your streaming device, gaming console, DVD/Blu-ray player and cable box are all connected directly to your TV.

Dansk
1 Kontrollér dine tv-tilslutninger. Se på din aktuelle opsætning. A. Hvis du allerede har højttalere og en audio receiver, skal du kobles dem fra. Du får ikke brug for dem med PLAYBASE. B. Sørg for, at din streaming-enhed, spillekonsol, DVD/Blu-ray-afspiller og kabelboks alle er tilkoblet direkte til tv'en.
2 Slut kablerne til PLAYBASE. Ljuddkab (venstre): Fjern de beskyttende hænder. Tilknyt forsigtigt kabel til PLAYBASE's digitale audio-input. Lysledningsledning (højre): Slut lysledningsledningen helt ind i PLAYBASE's lysnetstik.

Español
1 Verifique las conexiones de su televisor. Eche un vistazo a su configuración actual. A. Si ya tiene altavoces y un receptor de audio, desconéctelos. No los necesitará con PLAYBASE. B. Asegúrese de que su dispositivo de transmisión, con PLAYBASE a de vídeo, reproductor de DVD/Blu-ray y caja de cables están todos conectados a su televisor.

Français
1 Vérifiez vos connexions TV. Regardez votre configuration actuelle. A. Si des haut-parleurs et un récepteur audio sont branchés, débranchez-les. Vous n'en aurez pas besoin avec le PLAYBASE. B. Vérifiez que votre console de jeu, votre lecteur DVD/Blu-ray et votre box TV sont tous connectés directement à votre TV.

Italiano
1 Controllare le connessioni di rete. Controllare l'installazione attuale. A. In caso di diffusori esistenti e di un ricevitore audio, scollegarli. Con la PLAYBASE non saranno necessari. B. Assicurarsi che il dispositivo di streaming, la console giochi, il lettore DVD/Blu-ray e il decoder siano tutti collegati direttamente al televisore.

Nederlands
1 Controleer de tv-aansluitingen. Bekijk uw huidige configuratie. A. Koppen bestaande speakers en de audioreceiver los. Deze zijn niet nodig met PLAYBASE. B. Zorg ervoor dat het apparaat waarmee u streamt, de spelconsol, dvd-/blu-rayspeler en kabelontvanger rechtstreeks op de tv zijn aangesloten.

Norsk
1 Kontrollerer tv-tilkoblingene dine. Se på oppsettet ditt. A. Hvis du allerede har høyttalere og en lydtekniker må du koble fra disse. Du vil ikke trenge dem med PLAYBASE. B. Sørg for at din streaming-enhet, spillekonsoll, DVD/Blu-ray-spiller og dekoder er koblet direkte til TV-en.

Download the Sonos app

Open the app and follow the setup instructions.



Português
1 Verifique as conexões da TV. Confira a configuração atual. A. Caso você já tenha alto-falantes e um receptor de áudio, desconecte-os. Com o PLAYBASE, você não precisa deles. B. Confira se o dispositivo de streaming, console de jogos, player de DVD/Blu-ray e aparelho de TV a cabo estão todos conectados diretamente à TV.

Svenska
1 Kontrollera tv-anslutningarna. Ta en titt på din nuvarande installation. A. Om du redan har högtalare och ljudinställningsapp, koppla från dem. Du behöver inte dem med PLAYBASE. B. Se till att din streaming-enhet, spelkonsoll, DVD/Blu-ray-spelare och digitalbox alla är anslutna direkt till din tv.

SONOS

The Home Sound System

