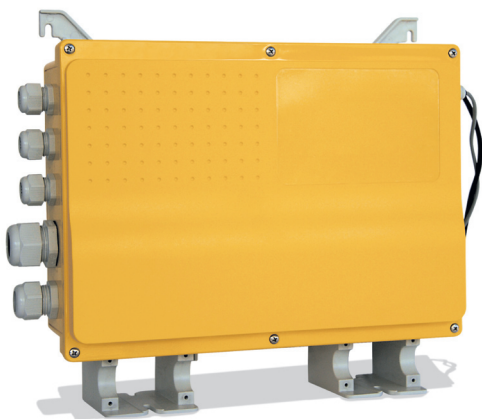
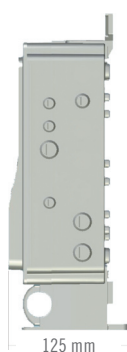
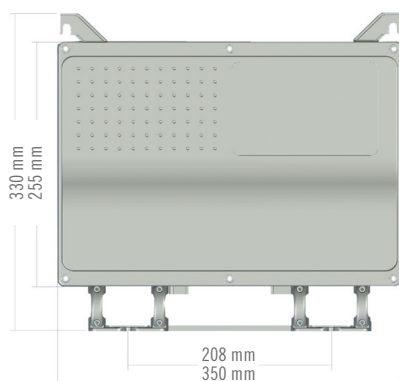


▶▶▶ controls EASY NOVA



- ▶ UP TO 3 JET PUMPS
- ▶ VARIABLE SPEED PUMP AND BLOWER CONTROL
- ▶ AUTOMATIC PROGRAMMING
- ▶ AUTOLEARNING FUNCTION AND SMART MANAGEMENT OF LOADS
- ▶ SIMPLE AND INTUITIVE ASSEMBLING
- ▶ COMPENSATION TANK MANAGEMENT
- ▶ ELECTRIC HEATER UP TO 3,6 kW OR STAND-ALONE REMOTE HEATER
- ▶ AUXILIARY KEYPAD OR PIEZO SWITCHES FOR LOAD ACTIVATION ONLY
- ▶ IR REMOTE CONTROL OR RS 485 PORT

EasyNova is a versatile control for portable and in-ground SPAs, also equipped with compensation tank. It allows to control up to 3 jet pumps, circulation pump and blower. Moreover with **EasyNova** you can control a variable speed pump and variable speed blower, only by adding a standard external inverter. When the system is powered for the first time, an autolearning function verifies the loads connected and their consumption. The “smart management of loads” function optimizes loads activation, capturing the real amperage draw instead of the number of working loads. By using a “programming key” you can set-up SPA configuration automatically, avoiding the setting procedure through the keypad. The same “programming key” allows you to up-date control's firmware directly on board. A wide range of electric heaters is available, but you can also connect a remote heater (an heat exchanger for example). **EasyNova** integrates also the control of water level inside your SPA: if a low level is detected, the control automatically stops the possibility to activate any load till the SPA is refilled to an appropriate level. A standard serial port RS 485 is available in order to simplify the connection of **EasyNova** to new advanced accessories.



MAIN FEATURES

- ▶ Up to 3 jet pumps
- ▶ Pump 3
- ▶ Blower
- ▶ Circulation Pump
- ▶ Ozone
- ▶ Light
- ▶ Heater up to 3,6 kW
- ▶ Variable Speed Pump / Blower Control
- ▶ PG connectors
- ▶ Port RS 485 interface (optional)
- ▶ Real Time Clock (optional)
- ▶ IR Remote control (optional)
- ▶ Smart Winter Mode

ELECTRICAL

- ▶ Power supply:
max 32A @ 230Vac 50/60 Hz
- ▶ Pump 1: 2Hp @ 230Vac
- ▶ Pump 2: 2Hp @ 230Vac
- ▶ Pump 3: 2Hp @ 230Vac
- ▶ Blower: 6A @ 230Vac
- ▶ Ozone generator:
1A @ 230Vac or 350mA @ 12Vac
- ▶ Light: 2A @ 12Vac
- ▶ Electric Heater: 16A @ 230Vac
- ▶ Heat Exchanger: 5A @ 230Vac
(or dry contact)
- ▶ Comp. Tank: 10A @ 230Vac

MAIN KEYPADS

- ▶ K-4, K-89, K-90 (10 keys)
- ▶ K-8 (8 keys)
- ▶ K-35 (6 keys)
- ▶ K-9, K-79, K94, K19 (4 keys)

AUXILIARY KEYPADS

- ▶ K-3 (4 keys, no led)
- ▶ Piezo switches (no led)

ENVIRONMENTAL

- ▶ Humidity: 80% n.c.
- ▶ Operating temp.: 0-50 °C
- ▶ Storage temp.: 5-45 °C

MECHANICAL

- ▶ Weight: 3,5 Kg
- ▶ Dimensions: 350x330x125 mm
- ▶ IP: X5

STANDARD COMPLIANCE

- ▶ EN 60335-1
- ▶ EN 60335-2-60

CERTIFICATIONS

- ▶ CE
- ▶ S

ACCESSORIES

- ▶ Easy Heater 2,0 / 3,0 / 3,6 kW
- ▶ Programming key
- ▶ Light
- ▶ Ozone
- ▶ IR remote control
- ▶ Level sensors
- ▶ IR Remote control
- ▶ Water temp. probe

CONFIGURATIONS*

- ▶ Pump 1 (2 speed), Pump 2 (2 speed)
- ▶ Pump 1 (2 speed), Pump 2 (1 speed), Pump 3 (1 speed)
- ▶ Pump 1 (2 speed), Pump 3 (variable speed)
- ▶ Pump 1 (2 speed), Pump 2 (2 speed), Pump 3 (variable speed)

* When a dual speed pump output is available, you can connect also a single speed pump. All configurations allow the management of a Circulation Pump and a Blower (single or variable speed).

EXAMPLES OF KEYPADS AVAILABLE



K89



K90



K8



K94

