

Super-lightweight framed formwork HANDI

The universal super-lightweight formwork for working without crane

Handi is a lightweight framed formwork system, which has been specially designed for quick and cost-saving construction. Thanks to its lightweight panels the forming process is effectively implemented by hand. Consequently, the Handi system suits best for forming of foundations, small aboveground and underground concreting work in projects with limited use of crane or without it and with difficulties in use of heavy framed formwork systems (e.g. Varimax system). In addition, it has made a good use in small projects such as villas, private houses, living compounds etc.

Load-bearing capacity:

- 35 kN/m² pressure of fresh concrete
- High quality film faced plywood with thickness of 15mm. Film weight 240g/m²

Cost-effective

- Universal application of the Handi system will give you an opportunity to use one system for variety of different tasks.
- Reduction of expenses due to minimization of crane usage.
- High number of use cycles means lower follow-up expenses.
- Reduction of expenses by means of restoration and cleaning possibilities.
- Galvanized or powder-coated steel frames, for long service life.
- High quality of concrete surface minimizes finishing work.

Areas of use of the Handi system:

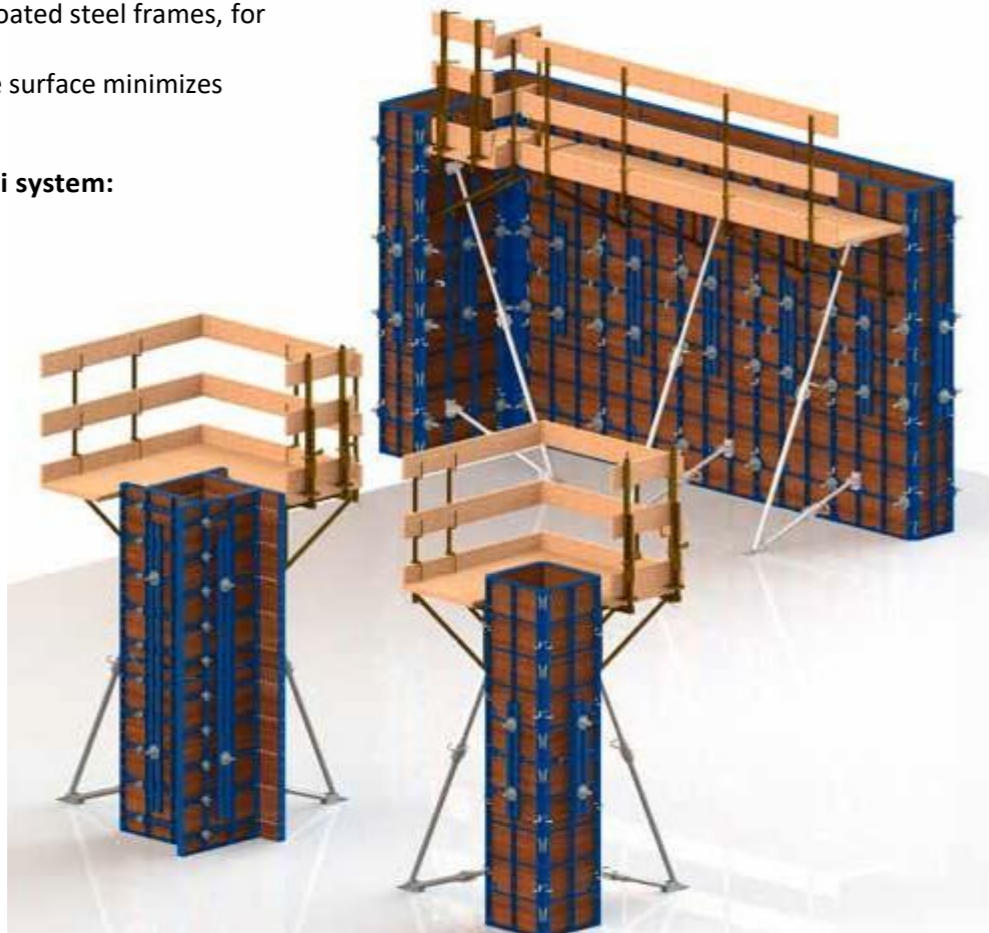
- Wall formwork
- Column formwork
- Foundation formwork

Easy to use

- Having a grid of standard panel sizes provides much easier planning and forming.
- All the connectors and accessories are easily fixed into the slots and quickly tighten, consequently forming time is efficient and maximized.
- Ergonomic of the system ensures fast and save assembly

Safe use

- Accessories such as — lifting hooks, wall brackets, supporting struts etc. make for save and easier handling of the system.

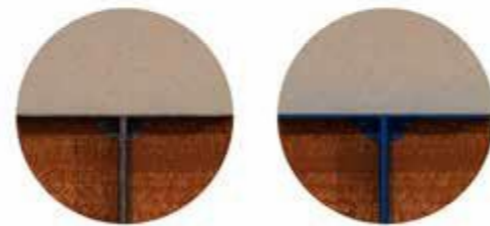


HANDI panels

The heights and widths of the Handi panels result in a logical and advantageous increment-grid. Small amount of different panels sizes makes planning easier and forming faster.

- 7 widths of panel
- 3 heights of panel
- 5 versatile panels

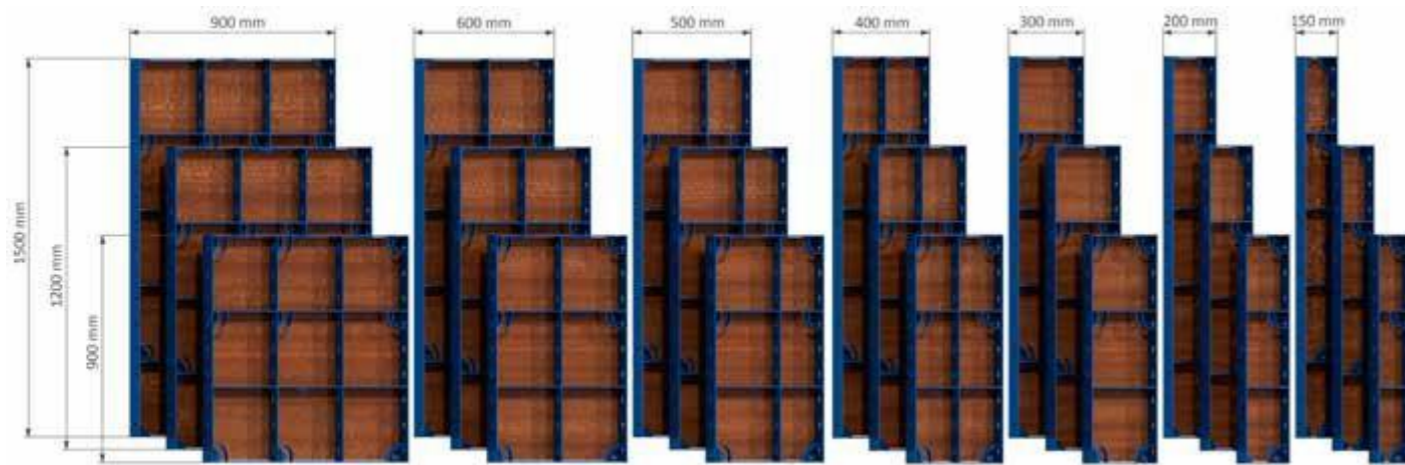
For any type and size of the panel two options of covering are available.



Galvanized

Powder-coated

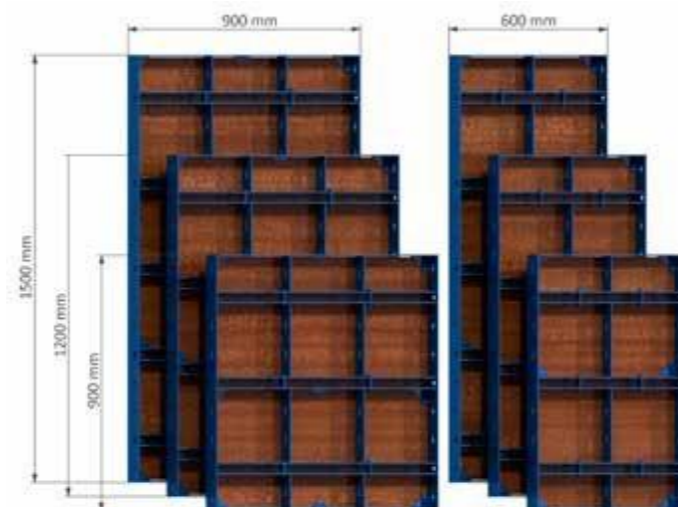
STANDARD PANELS



VERSATILE PANELS

The special hole pattern makes these panels particularly suitable for efficient forming of:

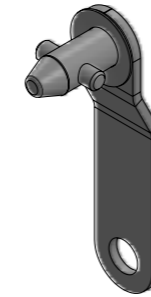
- Corners
- Wall junctions
- Columns



HANDI panel connection

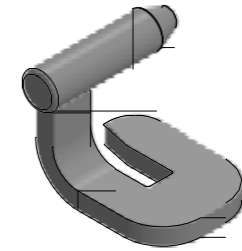
CLIP

For Handi panels connection use binding clip. Install the clip into the slot and turn it 90°- elements are firmly connected.



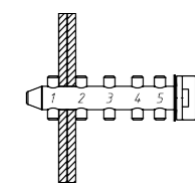
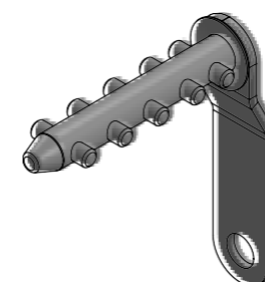
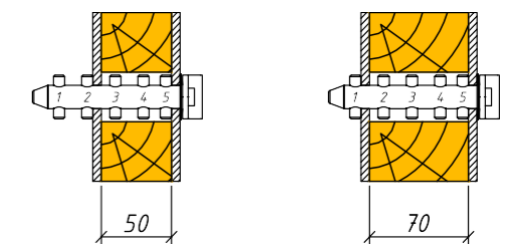
BINDING CLIP

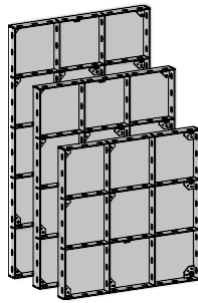
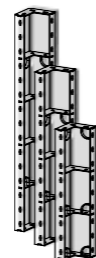
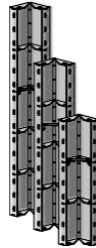
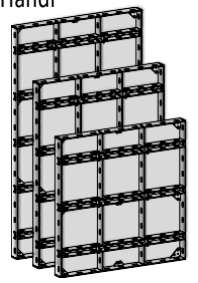

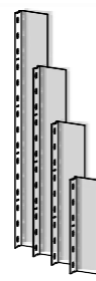
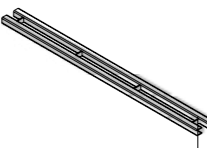
For Handi panels connection binding clips can also be used.



5-PIN CLAMP FOR COMPENSATION OF LINEAR EXTENSIONS

In case of compensation of linear extensions (1-7 cm) between the panels connect panels with 5-pin clamp. Installation of the 5-pin clamp is identical to the installation of the clip.



Item		[kg]	Article no	Item		[kg]	Articleno	
Standaard paneel Handi 	900x1500mm	54,10	SBF13 112	Internal angle Handi 	200x900mm	21,07	SFB13 430	
	600x1500mm	39,95	SBF13 116		200x1200mm	28,70	SBF13 420	
	500x1500mm	34,15	SBF13 118		200x1500mm	35,64	SBF13 410	
	400x1500mm	30,35	SBF13 120					
	300x1500mm	22,48	SBF13 122					
	200x1500mm	18,51	SBF13 126	Opties: xx xxx 000 - Poedercoating; xxxxx 100 - Verzinkt; xxxxx 200 - Hot Dip Verzinkt; Maatwerk;				
	150x1500mm	16,60	SBF13 128					
	900x1200mm	44,21	SBF13 212					
	600x1200mm	30,96	SBF13 216					
	500x1200mm	27,72	SBF13 218					
	300x1200mm	18,24	SBF13 222					
	200x1200mm	15,00	SBF13 226					
	150x1200mm	13,44	SBF13 228					
	900x900mm	34,58	SBF13 312		Joint angle Handi 	200x900mm	27,42	SBF13 432
	600x900mm	23,98	SBF13 316			200x1200mm	29,19	SBF13 422
500x900mm	21,78	SBF13 318	200x1500mm	38,06		SBF13 412		
400x900mm	19,02	SBF13 320						
300x900mm	14,23	SBF13 322						
200x900mm	11,62	SBF13 326	Opties: xxxxx 000 - Poedercoating; xxxxx 100 - Verzinkt; xxxxx 200 - Hot Dip Verzinkt; Maatwerk;					
150x900mm	10,37	SBF13 328						
900x1500mm-V	64,18	SBF13 110						
600x1500mm-V	45,21	SBF13 114						
900x1200mm-V	52,51	SBF13 210						
Versatile paneel Handi 	600x1200mm-V	36,92	SBF13 214					
	900x900mm-V	41,04	SBF13 310					
	600x900mm-V	28,83	SBF13 314					
External angle Handi 	600mm	4,27	SBF13 444	Expansion block Handi 	600mm	5,68	SBF13 640	
	900mm	6,34	SBF13 434		900mm	8,64	SBF13 630	
	1200mm	8,42	SBF13 424		1200mm	11,38	SBF13 620	
	1500mm	10,52	SBF13 414		1500mm	14,22	SBF13 610	
Waling Handi 				500mm	4,67	SBF13 505		
				600mm	5,57	SBF13 506		
				800mm	7,40	SBF13 508		
				1000mm	9,37	SBF13 510		
				1500mm	13,86	SBF13 515		
				2000mm	18,50	SBF13 520		
				2500mm	23,05	SBF13 525		
				3000mm	27,57	SBF13 530		
				3500mm	32,07	SBF13 535		
				4000mm	36,69	SBF13 540		
			4500mm	41,28	SBF13 545			

Supporting strut 250 Handi



21,85 SBF13 702

Stop-end plate Handi



6x75x750 2,36 SBF13 716

Plastic cone



0,005

Supporting strut 340 Handi



Tie rod 15,00 mm



0.50m	0.80	SBF92 050
0.75m	1.20	SBF92 075
1.00m	1.60	SBF92 100
1.25m	2.00	SBF92 125
1.50m	2.40	SBF92 150
1.75m	2.80	SBF92 175
2.00m	3.20	SBF92 200
2.25m	3.60	SBF92 225
2.50m	4.00	SBF92 250
2.75m	4.40	SBF92 275
3.00m	4.80	SBF92 300

Lifting hook Handi



2,88 SBF13 706

Star-shaped nut



SBF13 STR

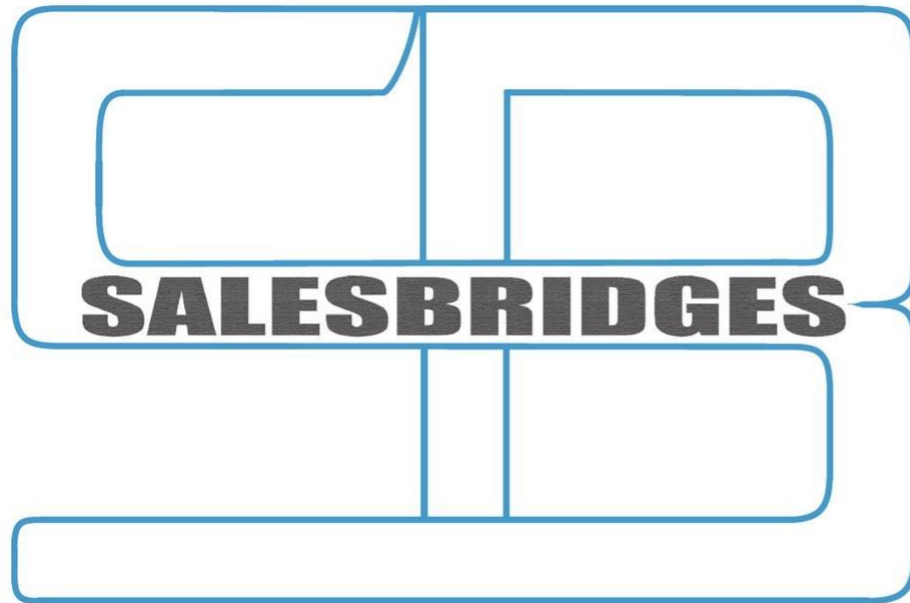
Superplate 15.0



SBF13 SPR

Contact

Het universeel super-lichtgewicht bekistingssysteem voor werken zonder kraan



SalesBridges B.V.

Etta Palmstraat 140
2135 LJ Hoofddorp

Telefoon: +31(0)6 5288 3848
Email: sales@salesbridges.nl

BTW nummer: NL855288152B01
KvK Amsterdam: 63552671