



bambrella®

For a Greener World



2015

WELCOME

ABOUT US

Bambrella® Ltd was formed by the directors of the Woodstocks International group of companies who have been manufacturing garden furniture and parasols in Indonesia since 1996. Prior to this the directors were wooden boat builders. The wealth of experience we have gained over the years in this industry, inspired us to invest time and resources into research and rigorous testing of materials, in order to produce a superior parasol product. We use unique patented designs and innovative technology to manufacture parasols of unsurpassed quality. Bambrella® parasols are made in our own factories, enabling us to strictly monitor quality so that we consistently produce the best parasols on the market.

In 2010 we expanded our manufacturing operation into China and began the manufacture of Bambrella® parasols there. The reason for the move from Indonesia was the plentiful supply of superior Moso bamboo, which we found to be the only bamboo which could be processed and treated for outdoor use, as well as being available with FSC certification.

Bambrella® has proven to be the highest quality laminated bamboo parasol on the market. One of the reasons is its ability to resist the inherent problem inferior products have of mould and mildew occurring when bamboo is exposed to the elements. This effective resistance has taken years of testing to overcome. Another reason is the patented joint system which enables us to hot press and glue long lengths of laminations. These innovations make it very difficult for other manufacturers to replicate the quality of Bambrella®. Independent laboratory-testing has been conducted for mould and mildew defence and the ability to prevent de-lamination. This gives us, and our customers, confidence in this fine product.

Our mission is to supply commercial, contract and domestic users with a strong, durable well-designed parasol which will last, whilst maintaining a natural wood look, finish and feel. At Bambrella® we constantly look to improve and enhance our product range and we are designing and testing an exciting new range of outdoor furniture using high-quality modern materials combined with bamboo. The materials used in the production of our outdoor furniture and umbrellas are known to be the best available so that they can withstand the many differing climates and conditions around the world where our products are found.

Rupert Bottomley

Rupert Bottomley, Director
Bambrella®





BAMBRELLA® AND THE ENVIRONMENT

Bambrella® is a certificate holder in the Forest Stewardship Council (FSC®) scheme and we endeavour to source our bamboo through FSC® certified forests.

The FSC® have only been certifying bamboo forests since 2008 and although bamboo is the fastest growing plant in the world, we at Bambrella® feel that these bamboo forests need to be managed responsibly. This ensures that our bamboo is well managed, and protects local communities and natural wildlife.

All the materials used in the production of our umbrellas are 100% recyclable. The oil finish we use has a low VOC and the bamboo is dipped rather than sprayed. The glues we use are European and are rated well within the EU, E1 standard. Recycled materials are used for packaging where possible. All this helps keep the impact of manufacturing on the environment to a minimum. At Bambrella® we understand our social responsibilities and require our international partners to adhere to high levels of welfare, far exceeding local labour standards.

PRODUCT INFORMATION

The process of producing Bambrella® parasols starts with the careful selection of the bamboo. After years of research and rigorous testing we found Moso bamboo to be the only species suitable for outdoor use. The characteristic of Moso bamboo which set it apart from over a thousand other species is the size of the individual fibre strands. These strands are much smaller and more tightly condensed and are similar to the structures in fine grained hardwoods like teak. We found other bamboos that had larger strands and were not so tightly condensed were more like softwoods, as the fibres/strands would peel individually, as well as being more susceptible to mould and mildew.

Once the bamboo has been harvested, the bamboo is split down the length of the pole into strips which are planed flat ready for lamination. The first stage of the process is to kiln dry the strips which gradually reduces the moisture content to stabilise the bamboo and prevent cracking, warping and splitting. The next stage is the carbonising process which takes away the starch giving the bamboo a rich golden colour. We then laminate the bamboo together to make different sizes of lumber using a hot press which guarantees the glue penetrates and has a much more reliable and even adhesion than cold press laminating.

Obviously this is the basic process but to make the bamboo suitable for outdoor use is far more technical and has taken years of research and development.

The bamboo is then precisely machined into different shaped and sized components before being carefully finished with our specially formulated penetrating oil. The parasols are then carefully assembled using quality 304 brushed stainless steel fittings and covers of your choice.

CONTENTS

LEVANTE - 6

INFINITY - 8

SIROCCO - 10

SIDE WIND - 12

TELESCOPIC - 14

ALIZE - 16

YACHT - 18

CIRCA AND TRI-POD - 19

MATERIAL COMPARISON - 20

PARASOL COVERS - 21

BASES - 22

ACCESSORIES - 23

COMMERCIAL AND CONTRACT - 24

PRINTING - 25

SPARE PARTS - 26

**BAMBRELLA® TEST ALL THE
DIFFERENT RANGES OF
PARASOLS IN A WIND TUNNEL
UP TO 90KM/H**

**FIND BAMBRELLA® ON
YOU TUBE FOR WIND TUNNEL
TESTS AND ASSEMBLY INSTRUCTIONS**



BAMBRELLA® LEVANTE

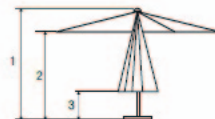


Bambrella® Levante is our premium and most popular parasol, designed for the commercial and high-end domestic markets. It is made using a single piece pole for extra strength and durability, and has simple, clean classic lines, with the contemporary feel of stainless steel and natural bamboo. Our double pulley and rope system ensures easy raising and lowering of the parasols, even on the largest of models. The Levante range incorporates a turned bamboo hub and runner with stainless steel brackets, a bamboo finial, and an elegant, practical hour glass shaped pin made from bamboo and stainless steel. The covers are attached using our own bolt-down stainless steel rib end protector system or alternatively sewn pockets. The ribs and supporting arms are fitted with stainless steel through bolts, making all the parts easily interchangeable.




Technical Data - Levante

Material frame: The pole, ribs, hub, runner and finial are all made using laminated bamboo. All metal fittings are 304 stainless steel.

Opening: A double pulley and rope system is used for easy light opening.

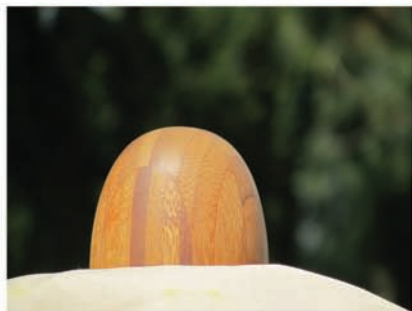


1=total height 2=open height
3=closed height

Shape	Code	Size	Total height	Open height	Closed height	Pole Size	No of ribs	Size of ribs
	2.5m R-L	2.5m 8'3"	2.65m 8'8"	2.1m 6'10"	1.24m 4'	38 mm 1 1/2"	8	28 x 20mm 1 1/8" x 3/4"
	3.0m R-L	3.0m 9'11"	2.7m 8'10"	2.1m 6'10"	1.05m 3'5"	48 mm 1 7/8"	8	28 x 20mm 1 1/8" x 3/4"
	3.5m R-L	3.5m 11'6"	2.8m 9'2"	2.1m 6'10"	0.89m 2'11"	48 mm 1 7/8"	8	35 x 20mm 1 3/8" x 3/4"
	4.0m R-L	4.0m 13'2"	2.8m 9'2"	2.1m 6'10"	0.83m 2'8"	58 mm 2 1/4"	8	35 x 20mm 1 3/8" x 3/4"
	2.1m SQ-L	2.1 x 2.1m 6'11" x 6'11"	2.75m 9'0"	2.13m 6'11"	1.10m 3'7"	38 mm 1 1/2"	4	28 x 20mm 1 1/8" x 3/4"
	2.6m SQ-L	2.6 x 2.6m 8'7" x 8'7"	2.9m 9'6"	2.10m 6'10"	0.86m 2'10"	48 mm 1 7/8"	8	28 x 20mm 1 1/8" x 3/4"
	3.0m SQ-L	3.0 x 3.0m 9'11" x 9'11"	3.05m 10'0"	2.26m 7'5"	0.80m 2'7"	48 mm 1 7/8"	8	35 x 20mm 1 3/8" x 3/4"
	3.4m SQ-L	3.4 x 3.4m 11'2" x 11'2"	3.37m 11'0"	2.42m 7'11"	0.80m 2'7"	58 mm 2 1/4"	8	35 x 20mm 1 3/8" x 3/4"
	2.0X3.0m REC-L	2.0 x 3.0 m 6'7" x 9'11"	2.88m 9'5"	2.1m 6'10"	0.92m 3'0"	48 mm 1 7/8"	6	28 x 20mm 1 1/8" x 3/4"
	2.5X3.5m REC-L	2.5 x 3.5m 8'3" x 11'6"	3.0m 9'10"	2.13m 6'11"	0.76m 2'6"	58 mm 2 1/4"	8	35 x 20mm 1 3/8" x 3/4"



BAMBRELLA® INFINITY

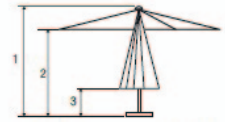


Bambrella® Infinity range is similar to the Levante, with the difference being a stainless steel underarm support which replaces the pivot bolt of the rib and rib support on the Levante. We have also increased the size of some of the components on the smaller parasols.




Technical Data - Infinity

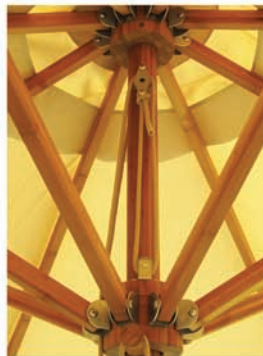
Material frame: The pole, ribs, hub, runner and finial are all made using laminated bamboo. All metal fittings are 304 stainless steel.

Opening: A double pulley and rope system is used for easy light opening.



1=total height 2=open height
3=closed height

Shape	Code	Size	Total height	Open height	Closed height	Pole Size	No of ribs	Size of ribs
	2.5m R-I	2.5m 8'3"	2.65m 8'8"	2.1m 6'10"	1.24m 4'	48 mm 1 7/8"	8	35 x 20mm 1 3/8" x 3/4"
	3.0m R-I	3.0m 9'11"	2.7m 8'10"	2.1m 6'10"	1.05m 3'5"	48 mm 1 7/8"	8	35 x 20mm 1 3/8" x 3/4"
	3.5m R-I	3.5m 11'6"	2.8m 9'2"	2.1m 6'10"	0.89m 2'11"	58 mm 2 1/4"	8	35 x 20mm 1 3/8" x 3/4"
	4.0m R-I	4.0m 13'2"	2.8m 9'2"	2.1m 6'10"	0.83m 2'8"	58 mm 2 1/4"	8	35 x 20mm 1 3/8" x 3/4"
	2.1m SQ-I	2.1m x 2.1m 6'11" x 6'11"	2.75m 9'0"	2.13m 6'11"	1.1m 3'7"	48 mm 1 7/8"	4	35 x 20mm 1 3/8" x 3/4"
	2.6m SQ-I	2.6m x 2.6m 8'7" x 8'7"	2.9m 9'6"	2.1m 6'10"	0.86m 2'10"	48 mm 1 7/8"	8	35 x 20mm 1 3/8" x 3/4"
	3.0m SQ-I	3.0m x 3.0m 9'11" x 9'11"	3.05m 10'0"	2.26m 7'5"	0.80m 2'7"	58 mm 2 1/4"	8	35 x 20mm 1 3/8" x 3/4"
	3.4m SQ-I	3.4m x 3.4m 11'2" x 11'2"	3.37m 11'0"	2.42m 7'11"	0.80m 2'7"	58 mm 2 1/4"	8	35 x 20mm 1 3/8" x 3/4"
	2.0x3.0m REC-I	2.0m x 3.0m 6'7" x 9'11"	2.88m 9'5"	2.1m 6'10"	0.92m 3'0"	48 mm 1 7/8"	6	35 x 20mm 1 3/8" x 3/4"
	2.5x3.5m REC-I	2.5m x 3.5m 8'3" x 11'6"	3.0m 9'10"	2.13m 6'11"	0.76m 2'6"	58mm 2 1/4"	8	35 x 20mm 1 3/8" x 3/4"



BAMBRELLA® SIROCCO



The Sirocco is our budget range whilst still keeping the Bambrella® three key points of design - durability, strength and style. The main feature of the Sirocco is the use of nylon for the hub and runner, which have built in rollers for the rope pulley system and a patented locking cleat. This clamps the rope so there is no need for the use of a pin to hold the canopy up. The smaller sizes of the Sirocco can have a two piece pole using a 304 stainless steel connector allowing for easy storage and transportation. The Sirocco like all of our other ranges has easily changeable parts. These parasols are designed for both commercial and domestic use.

Technical Data - Sirocco




Material: The pole and ribs are all made using laminated bamboo. The hub, runner and finial are all made from marine grade nylon PA66.

All metal fittings are 304 stainless steel.

Opening: A double pulley and rope system is used for easy light opening.



1=total height 2=open height
3=closed height

Shape	Code	Size	Total height	Open height	Closed height	Pole Size	No of ribs	Size of ribs
	2.0m R-S	2.0m 6'6"	2.35m 7'8"	1.9m 6'3"	1.2m 3'11"	38 or 48mm 1 1/2" or 1 7/8"	6	25 x 20mm 1" x 3/4"
	2.5m R-S	2.5m 8'3"	2.4m 7'10"	1.9m 6'3"	1.2m 3'9"	38 or 48mm 1 1/2" or 1 7/8"	6	25 x 20mm 1" x 3/4"
	2.7m R-S	2.7m 8'10"	2.43m 7'11"	1.9m 6'3"	1.0m 3'3"	38 or 48mm 1 1/2" or 1 7/8"	6	25 x 20mm 1" x 3/4"
	3.0m R-S	3.0m 9'11"	2.54m 8'4"	1.9m 6'3"	1.0m 3'3"	38 or 48mm 1 1/2" or 1 7/8"	6	25 x 20mm 1" x 3/4"
	3.5m R-S	3.5m 11'6"	2.7m 8'10"	2.0m 6'6"	0.8m 2'7"	45 or 58mm 1 7/8" or 2 1/4"	8	28 x 20mm 1 1/8" x 3/4"
	4.0m R-S	4.0m 13'2"	2.87m 9'5"	2.0m 6'6"	0.73m 2'5"	58mm 12/4"	8	35 x 20mm 1 3/8" x 3/4"
	2.0m SQ-S	2.0 x 2.0m 6'6" x 6'6"	2.53m 8'4"	2.0m 6'6"	1.0m 3'3"	38 or 48mm 1 1/2" or 1 7/8"	4	25 x 20mm 1" x 3/4"
	2.6m SQ-S	2.6 x 2.6m 8'7" x 8'7"	2.55m 8'4"	2.0m 6'6"	0.5m 1'8"	48 mm 1 7/8"	8	25 x 20mm 1" x 3/4"
	2.9m SQ-S	2.9 x 2.9m 9'6" x 9'6"	2.8m 9'2"	2.0m 6'6"	0.50m 1'8"	48 mm 1 7/8"	8	28 x 20mm 1 1/8" x 3/4"
	3.4m SQ-S	3.4 x 3.4m 11'2" x 11'2"	2.8m 9'2"	2.0m 6'6"	0.45m 1'6"	58 mm 2 1/4"	8	35 x 20mm 1 3/8" x 3/4"
	1.7X2.9m REC-S	1.7 x 2.9m 5'7" x 9'6"	2.65m 8'8"	2.0m 6'6"	0.85m 2'9"	48 mm 1 7/8"	6	25 x 20mm 1" x 3/4"



BAMBRELLA® SIDE WIND



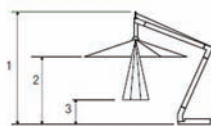
The Side Wind range is our range of side pole umbrellas, manufactured and designed to exacting standards with durability, strength and style in mind - the three key points of Bambrella® products. The Side Wind features a 360° rotating base and 45° tilt so you can still find shade as the Sun goes down. The base has adjustable feet for uneven surfaces whilst protecting the floor at the same time. We use a specialized type of polymer for the bearings meaning that they never seize up or rust. This umbrella was designed for both commercial and domestic use, bringing a magnificent focal point for any situation. We can also supply this parasol with a ground base.

Technical Data - Side Wind

Material frame: The posts, ribs, hub, runner and finial are all made using laminated bamboo. All metal fittings are 304 stainless steel.

Base frame and post connectors e-coated then powder coated steel.

Opening: A winch system is used using 304 stainless steel wire.



**1=total height 2=open height
3=closed height**

Shape	Code	Size	Total Height	Open Height	Closed height	No of ribs	Size of ribs	Bases
	3.5 R-SW	3.5m 11'6"	3.1m 10'2"	2.1m 6'10"	0.82m 2'8"	8	35 x 20mm 1 3/8" x 3/4"	2 x 70kg 2 x 154lb
	3.0 SQ-SW	3.0m 9'11"	3.20m 10'6"	2.1m 6'10"	0.6m 1'11"	8	35 x 20mm 1 3/8" x 3/4"	2 x 70kg 2 x 154lb
	3.4 SQ-SW	3.4m 11'2"	3.36m 11'0"	2.1m 6'10"	0.43m 1'5"	8	35 x 20mm 1 3/8" x 3/4"	4 x 50kg 4 x 110lb
	2.5X3.5m REC-SW	2.5 x 3.5m 8'3" x 11'6"	3.40m 11'2"	2.1m 6'10"	0.68m 2'3"	8	35 x 20mm 1 3/8" x 3/4"	2 x 70kg 2 x 154lb
	3.0X3.4m REC-SW	3.0 x 3.4m 9'7" x 12'11"	3.40m 11'2"	2.1m 6'10"	0.4m 1'4"	8	35 x 20mm 1 3/8" x 3/4"	4 x 50kg 4 x 110lb



BAMBRELLA® TELESCOPIC

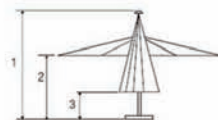


The four metre telescopic is our largest parasol and it is designed so it will still close over the height of a table. It is a stunning parasol and perfect for commercial use, when needing to shade a few tables. We make this parasol using either the Levante hub and runner or the nylon Sirocco hub and runner.

Technical Data - Levante telescopic

Material frame: The pole, ribs, hub, runner and finial are all made using laminated bamboo. All metal fittings are 304 stainless steel.

Opening: A double pulley and rope system is used for easy light opening.



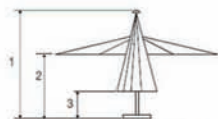
1=total height 2=open height
3=closed height

Technical Data - Telescopic Sirocco

Material: The pole and ribs are all made using laminated bamboo. The hub, runner and finial are all made from marine grade nylon PA66.

All metal fittings are 304 stainless steel.

Opening: A double pulley and rope system is used for easy light opening.



1=total height 2=open height
3=closed height

Shape	Code	Size	Total height	Open height	Closed height	Pole Size	No of ribs	Size of ribs
	4m SQ-T	4.0 x 4.0m 13'2" x 13'2"	4.0m 13'2"	2.3m 7'7"	0.8m 2'7"	58 mm 2 1/4"	8	35 x 20mm 1 3/8" x 3/4"

LEVANTE 4 METRE TELESCOPIC



SIROCCO 4 METRE TELESCOPIC



BAMBRELLA® ALIZE



The impressive Alize pavilion range is the ultimate luxury space for entertaining and relaxing alike. For those wanting more privacy you can close the drapes on four sides. The Alize is extremely robust and can be used as a permanent or temporary structure. The feet at the bottom of the posts can be fixed to any surface using bolts, screws, pegs or you can use our concrete filled bamboo bases. Like all Bambrella® products the Alize is designed for both commercial and domestic use, and this being the strongest design of shade in our collection.





Technical Data - Alize

Material frame: The pole, posts, ribs, hub, runner and finial are all made using laminated bamboo. All metal fittings are 304 stainless steel. The feet, corner bracket and rib bracket are made from e-coated then powder coated steel.



1=total height 2=frame height

Shape	Code	Size	Total height	Frame height	Post Size	No of ribs	Size of ribs
	3.0m SQ-A	3.0m 9'10"	3.20m 10'6"	2.1m 6'10"	93 x 93 mm 3 5/8" x 3 5/8"	8	35 x 20mm 1 3/8" x 3/4"
	3.0 x 4.0m REC-A	3.0 x 4.0m 9'10" x 13'1"	3.40m 11'2"	2.1m 6'10"	93 x 93 mm 3 5/8" x 3 5/8"	8	35 x 20mm 1 3/8" x 3/4"

BAMBRELLA® YACHT



The Yacht range has a stainless steel pole used with a canopy from either the Levante, Infinity or Sirocco range giving a more contemporary look whilst still keeping the strength. A lot of Bambrella's design and construction come from a wooden boatbuilding background and the use of stainless steel and wood/bamboo have always given a nautical feel.

BAMBRELLA®

TRI-POD AND CIRCA CHAIR



The **Circa** chair designed by Nick Rawcliff is unquestionably a chair that is a conversation starter in any location – a singular piece of circular furniture. By adjusting the positioning of the hoops, the carriage of the chair can be altered according to personal preference. The chair folds completely flat for easy storage.

The **Tri-Pod** frame consists of three laminated poles, making it incredibly strong and capable of holding weights of over 300kg. The webbing strap and bamboo feet prevent the poles from splaying apart on hard ground, for soft ground you simply open the three poles the opposite way, so the angle of the pole ends dig into the ground. Another feature of the tripod is that it has a stainless steel rotating hanging eye allowing you to effortlessly spin around 360 degrees.

ACRYLIC

We offer Sunbrella® acrylic for those who want the best cover to suit the Bambrella frame. Please visit the website sunbrella.com for more details.

MATERIAL COMPARISON

Fabric property	Sunbrella®	Spuncrylic®	Olefin	Polyester
Fabric width	54" / ~ 1.37m	54" / ~ 1.37m	54" / 1.37m	54" / ~ 1.37m
Maximum fabric width	56" / ~ 1.42m	80" / ~ 2.03m	65" / ~ 1.65m	72" / ~ 1.82m
Fabric weight	255g/m ² - 315g/m ²	240g/m ²	240g/m ²	240g/m ²
Material	Acrylic	Polyester	Polypropylene	Polyester
Method	Solution-dyed	Solution-dyed	Solution-dyed	Piece-dyed or yarn-dyed
Melting point °C	250 ~ 260	160 ~ 170	250 ~ 260	250 ~ 260
Colorfastness to light (AATCC16, option 3, water cooled, xeno-arc lamp, AATCC scale)	1500 hours; grade 4 - 5	800 - 1000 hours; grade 3 - 4	400 - 800 hours; grade 3 - 4	80 - 100 hours; grade 3 - 4
Tearing strength Elmendorf Apparatus (ASTM D1424 capacity of testing 6400)	Unknown	Warp: +11,5 Weft: 7.8	Warp: +11,5 Weft: 7.8	Good
Breaking strenght of textile fabrics, GRAB test (ASTM D5034, 1" G - E, Instron speed 12in/min)	Unknown	Warp: +180 Weft: +180	Good	Good
Ageing resistance	Excellent	Excellent	Fair	Good
Fabric weight variety	225g/m ² - 315g/m ²	190g/m ² - 300g/m ²	190g/m ² - 300g/m ²	140g/m ² - 320g/m ²
Fabric warranty	5 years	2 years	1 year	None
Cost comparison	250%	100%	80%	50%

PARASOL COVERS

We offer several types of material with different qualities, which give a range of performance depending on the use and the budget to be specified

SPUNCRYLIC®



Spuncrylic® is polyester that has gone through a process called solution dyeing giving it very high resistance to fading from sunlight. Spuncrylic® also has good stain resistance and water repellence. In addition it has a UPF of at least 50. This material has a similar performance to acrylic but at a much more affordable price.



Black
SP/08014



Taupe
SP/08040



Harvest Wheat
SP/08043



Ecreu
SP/08013



Ice White
SP/08056



Red
SP/08099



Sunflower Yellow
SP/08133



Light Blue
SP/08103



Forest Green
SP/08046



Terracotta
SP/08097

POLYESTER

Polyester is a strong fiber that is resistant to creasing and keeps its shape well. The price is quite low in comparison to other umbrella cover materials with the only drawback being the colour fastness of the darker materials. This is why we only offer two natural colours in the polyester material.

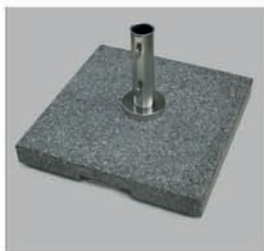


Natural
NAT01

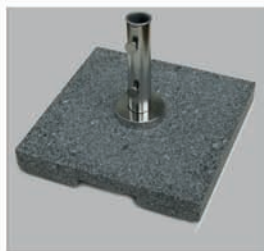


Khaki
BEI01

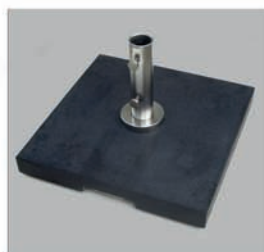
BAMBRELLA® BASES



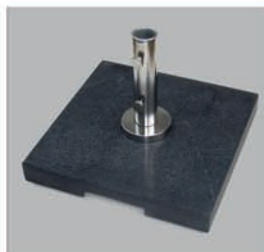
50 kg Grey granite base with pullout handle and wheels.
Size;
52cm x 52cm x 7cm



70 kg Grey granite base with pullout handle and wheels.
Size;
60cm x 60cm x 8cm



50 kg Black granite base with pullout handle and wheels.
Size;
52cm x 52cm x 7cm



70kg Black granite base with pullout handle and wheels.
Size;
60cm x 60cm x 8cm



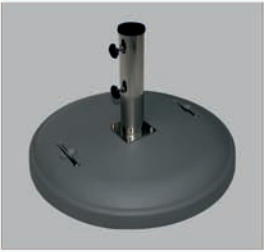
38mm, 48mm and 58mm base tubes for 50kg and 70kg granite bases.



ground bases for stainless steel base tubes and side winds.



30kg grey granite base with stainless steel pole.
Size;
45cm x 45cm x 5cm



50kg grey concrete base with pullout handles.
Size;
diameter 60cm x 11cm

PROTECTIVE COVERS



All our covers come with an extension pole, which is fitted into a channel in the cover; this enables you to easily place the cover over the top of the Bambrella® while zipping it down for final protection and storage.



For the SIDEWIND protective cover there are two extension poles so you can hook the cover over the entire canopy.



TV SCREEN



Two good marketing tools for retailers selling the bambrellas are the TV screen showing the windtunnel test and the leaflet holder which can both clamp onto the umbrella pole.

LEAFLET HOLDER



BAMBRELLA® DISPLAY RACKS



Our Bambrella® display rack is the ideal way to store, promote and retail our laminated bamboo parasols.

SPARE COVERS



Bambrella® replacement covers are conveniently packaged and available in a variety of colours, materials, sizes and styles fitting all our Bambrella® parasols and others depending upon suitability.

COMMERCIAL/CONTRACT PROJECTS

All of the ranges of Bambrella parasols are designed for both commercial and contract use due to their strength and quality. We supply hotels, spas, country clubs, restaurants, bars and golf clubs worldwide.





BRANDING

Bambrella® is a brand name known to supply eco-friendly commercial parasols, so whether you are a large corporation or small company wanting to promote your brand, what better or more sustainable way is there to advertise than using Bambrella® parasols?

PRINTING

All of our covers can be printed on with simple printed text of full colour company logos. For larger orders we screen print on the full roll of material before we cut out the shapes that make up the parasol cover, we call this full colour printing. This is perfect for advertising for businesses large or small. Our clients for printed parasols include drinks companies, breweries, distilleries, wineries, coffee shops, restaurants, pubs, clubs and other companies from all different sectors who want to promote their brand and quality in style.

TABLE TOPS

We supply a range of different table tops in three different shapes; round, rectangle and square. The table tops are made from triple laminated bamboo board, which has been treated for outdoor use, but can be also used indoors. The table tops have a thickness of 22mm, bespoke sizes can be manufactured to your specifications.



BAMBRELLA® PARTS



Ball finial



Disk finial



Bambrella® finial



Acorn finial



Nylon black hub



Nylon black runner



Resin black ball finial



Resin black acorn finial



Bamboo hub



Bamboo runner



Nylon Bambrella® Finial



Rope Pull



Up-roller



U-shaped hub and runner bracket



Down-roller



Infinity underarm support bracket



Rib-end protector



Cover bolt



Long bolt, PE and metal washer



Short bolt, PE and metal washer



Pulley rope



Bambrella® pin



Pole connector aluminium or stainless steel



Stainless steel pin

Bambrella® Ltd.
56 Station Road
Gomshall
Surrey
GU5 9LB
United Kingdom

E info@bambrella.com

T +44 (0) 1483 209330

www.bambrella.com

