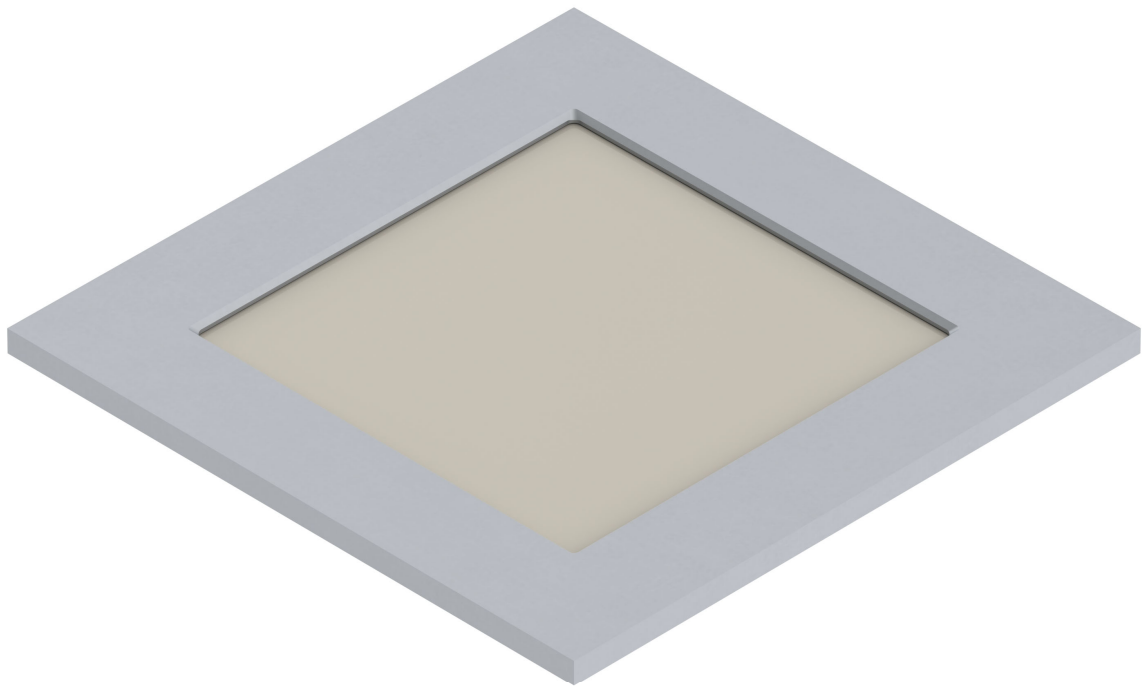

VERSA

INDOOR
OLED
LIGHT



Operating Instructions

ASTEL
LIGHTING

CONTENTS

Preface	3
Features	3
Precautions	3
Configurations and Components	4
Connection	6
Controls	6
Technical Specifications	7
Declaration of Conformity	10
Warranty	11



PREFACE

The compact OLED modular interior light VERSA series is designed with electronic driver built-in anodized aluminium casing with different mounting assemblies for creating unique configurations and structures.

Built-in microprocessor enables network connections and remote control with digital dimming.

Built-in ASTEL protocol enables complete DMX512 lighting control by using optional interfaces.

Advanced lighting technology allows perfect light spreading and the best illumination quality (CRI 90) with two different color temperature options.

All models are designed for operating at normal temperature conditions with thermal, transient and reverse polarity protections.

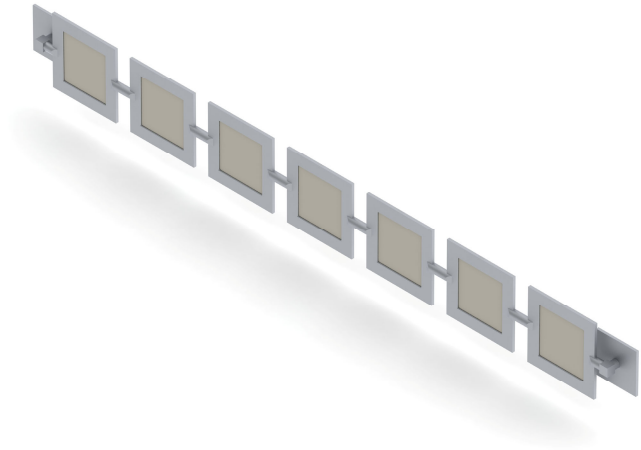
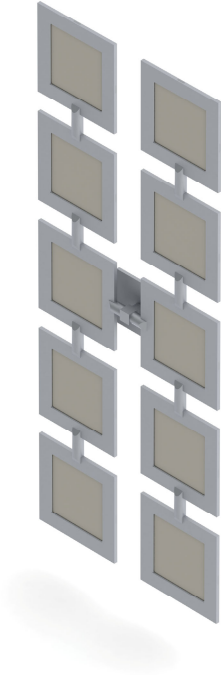
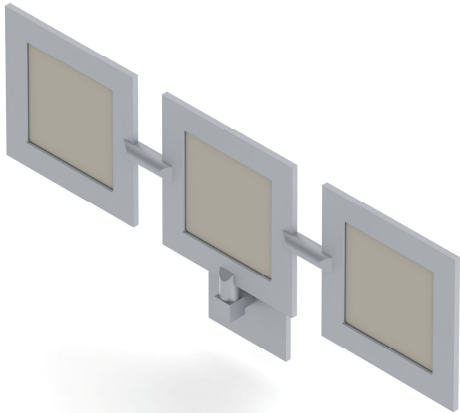
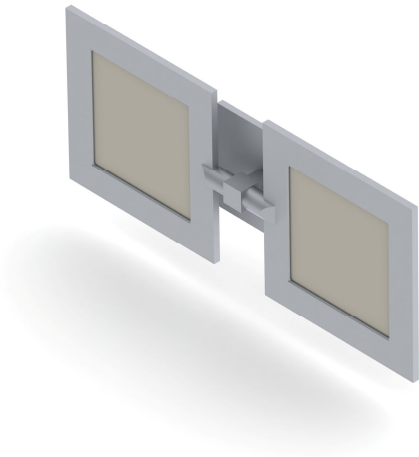
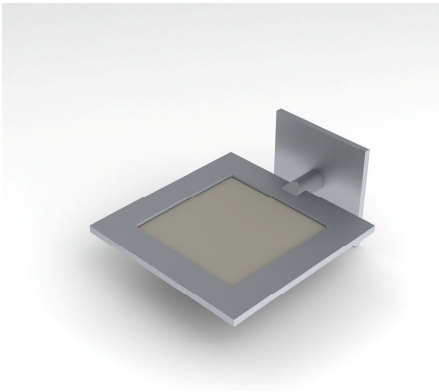
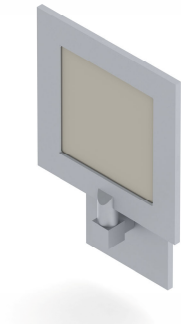
FEATURES

- Modular Aluminium Design
- Sand-Blasting and Anodizing E6C0 Finishing
- 1 OLED Panel Basic Assembly
- Daylight White or Warm White
- Remote Control
- Digital Dimming
- Built-in ASTEL Protocol for DMX512 Control
- Polarity Protection
- Transient Protection
- Low Power Consumption
- Simple Installation

PRECAUTIONS

- The indoor OLED light has to be installed and used in accordance with the instructions of this manual only.
- The power supply has to be disconnected before installation.
- Avoid using this unit near appliances generating strong magnetic fields.
- The optical window has to be cleaned with a mild soap or detergent and lukewarm water by using a soft cloth or sponge. Do not use abrasive or highly alkaline cleaners. Never scrape with razor blades or other sharp instruments. Benzene, leaded gasoline, acetone or carbon tetrachloride should never be used.
- Do not turn power off immediately and refer servicing to qualified service personnel if the interior & exterior light does not operate normally following the operating instructions.

CONFIGURATIONS AND COMPONENTS



1. Merging assembly

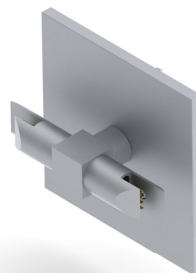
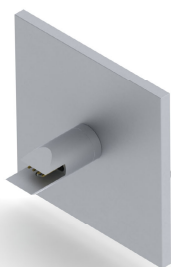
Sand-blasted anodized aluminium merging assembly.



Code	Description
LMS	Merging assembly

2. Wall-mount assembly

Sand-blasted anodized aluminium wall-mount assembly.



Code	Description
LWMS	Wall-mount assembly - straight
LWMR	Wall-mount assembly - right-angle
LWMD	Wall-mount assembly - double

CONNECTION

The power supply has to be connected through the main switch (not included) with correct polarity and protected by a fuse (not included). The power supply voltage range has to be from 10 – 30 Vdc.

Note:

- ***The power supply has to be switched off before installation.***

The indoor OLED light has to be connected as described in the table below:

ENGINE wire color	FUNCTION
Red	+ DC Power Supply
Black	GND Power Supply
Orange	+ Control
Brown	GND Control

For basic control of the light the CONTROL wire has to be connected through the momentary switch (not included) to the GND by using a 2-pole signal cable extension. (not included)

For DMX512 control optional LXU01 or LXU03 interface can be connected to the CONTROL wires by using a 2-pole signal cable (not included).

Note:

- ***When two or more lights are connected in the lighting system the control wires can be connected in parallel and all the lights then can be controlled by using only one momentary switch or LXU01 (LXU03) interface.***

CONTROLS

Control by momentary switch

Remote control by momentary switch can be used to turn-on and turn-off the light and to control the luminosity.

Turning on / off

Press the momentary switch momentary.

Dimming

When the light is on, press the momentary switch longer until the desired power is achieved.

Turning on minimum

When the light is off, press the momentary switch longer (e.g. one second or more) until the light is turned on at minimum power.

Set default

Press the momentary switch for min. 40 seconds or until the light is turned off.

DMX512 control

The network connection to control the light with the standard DMX512 protocol is enabled by using optional LXU01 or LXU03 interfaces.

TECHNICAL SPECIFICATIONS

OLED light panel basic assembly

Power supply	10 – 30 Vdc
Luminous flux	max. 75 lm (1 panel)
Color Rendering Index (CRI)	90
Operating temperature	-10°C - +40°C
Casing	Anodized Aluminium
Dimensions (panel)	133.0 x 133.0 x 5.1 mm
Weight (panel)	180 g

Design and specifications subject to change without notice.

DECLARATION OF CONFORMITY

according to IEC Guide 22 and EN 45014

Manufacturer's Name: ASTEL, Podjetje za projektiranje, proizvodnjo in trgovino, d.o.o.

Manufacturer's Address: Dutovlje 138
6221 Dutovlje
Slovenija

declares that the products

Item, Product Name and Model Number: 1. Indoor OLED light VERSA series

conform to the following Product Specifications:

EMC: EN 55015:2006 + A1:2007
EN 61547:1995 + A1:2000 + A2:2009
EN 61547:2009

Safety: EN 60598-1:2004 + A1:2006

Supplementary Information:

The products herewith comply with the requirements of the following Directives and carry the CE-marking accordingly:

- the EMC Directive 2004/108/EC
- the Low Voltage Directive 2006/95/EC

ASTEL d.o.o.
Dutovlje 138
6221 Dutovlje
Slovenija

12th September, 2014

WARRANTY

1. The equipment manufactured by ASTEL d.o.o. is warranted to be free from defects in workmanship and materials under normal use and service.
2. This Warranty is in effect for of two years from the date of purchase by the user. Proof of purchase must be included, to establish that it is inside the warranty period.
3. This Warranty is transferrable and covers the product for the specified time period.
4. In case any part of the equipment proves to be defective, other than those parts excluded in paragraph 5 below, the owner should do the following:
 - (a) prepare a detailed written statement of the nature and circumstances of the defect, to the best of the Owner's knowledge, including the date of purchase, the place of purchase, the name and address of the installer, and the Purchaser's name, address and telephone number;
 - (b) the Owner should return the defective part or unit along with the statement referenced in the preceding paragraph to the warrantor, ASTEL d.o.o., or an authorized distributor, postage/shipping prepaid and at the expense of the Purchaser;
 - (c) if upon the Warrantor's or authorized distributor's examination, the defect is determined to result from defective material or workmanship, the equipment will be repaired or replaced at the Warrantor's option without charge, and returned to the Purchaser at the Warrantor's expense;
 - (d) no refund of the purchase price will be granted to the Purchaser, unless the Warrantor is unable to remedy the defect after having a reasonable number of opportunities to do so. Prior to refund of the purchase price, Purchaser must submit a statement in writing from a professional supplier that the installation instructions of the Operating Instructions manual have been complied with and that the defect remains;
 - (e) warranty service shall be performed only by the Warrantor, or an authorized distributor, and any attempt to remedy the defect by anyone else shall render this warranty void.
5. There shall be no warranty for defects or damages caused by faulty installation or hook-up, abuse or misuse of the equipment including exposure to excessive heat, salt or fresh water spray, or water immersion except for equipment specially designed as waterproof.
6. There shall be no responsibility or liability whatsoever on the part of the Warrantor or its employees and representatives for injury to any person or persons, or damage to property, loss of income or profit, or any other consequential or resulting damage or cost which may be claimed to have been incurred through the use or sale of the equipment, including any possible failure or malfunction of the equipment, or part thereof.

ASTEL d.o.o., Dutovlje 138, 6221 Dutovlje, Slovenia
Tel: +386 5 7310771, +386 5 7310772
Fax:+386 5 7310789
E-mail: info@astel-lighting.com
Web: www.astel-lighting.com