

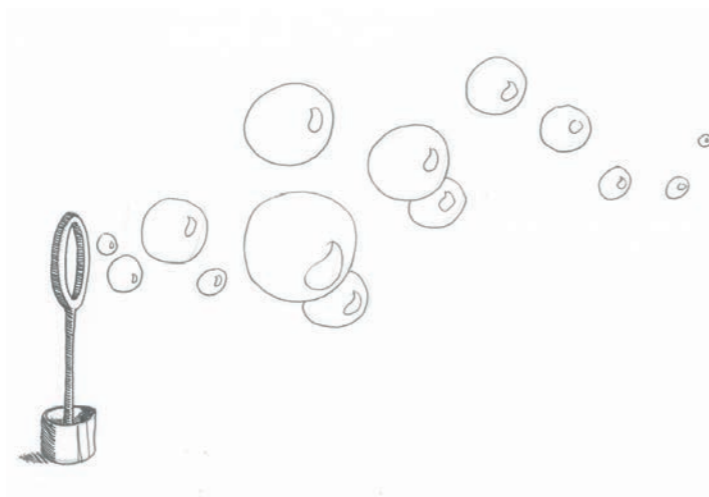
/

# IRIS

## PENDANT LIGHT

/

The story of „Iris“ begins in 2011. Whilst attending „Il Saloni“, the furniture fair in Milan, Sebastian Scherer made an interesting discovery, somewhere far beyond the bustling Italian metropolis. In a park some children were blowing soap bubbles. He paused and watched, fascinated by their game – what made these floating spheres so enchanting? Its shimmering effect and light, floating movement combined to make a simple thing into an enthralling spectacle. Could it be possible to capture this fleeting, aesthetic moment in an object?



**NEO/CRAFT**





/

## TRADITIONAL CRAFTSMANSHIP

/

The result of ambitious craftsmanship and technological innovation, Iris is the perfect illusion of a permanent, iridescent soap bubble. In keeping with designer Sebastian Scherer's inspiration of children blowing bubbles, the starting point of each Iris pendant light is a mouth blown glass globe.



/  
TECHNOLOGICAL  
INNOVATION  
/



dichroic coating : complementary colours in transmission and reflection

A dichroic coating is then applied to each piece using a technique developed especially for this project. Before Iris, dichroic coating was only possible on flat or slightly curved surfaces. The development process to achieve the perfect, iridescent coating of a sphere took nearly two years of research and experimentation.





/  
CONSTANT  
TRANSITION  
/

As with a real soap bubble, colours, transmission and reflection change depending on perspective and lighting situation. Iris reflects its surroundings in various colours causing object and space to seemingly be in constant transition.





/  
SOFT,  
UNFOCUSSED  
LIGHT  
/

An ingenious OLED module provides both Iris' light source and mount. The extremely thin aluminium framework ensures that the design is not compromised and that the OLED can be easily removed without dismantling the module. The dimmable OLED panel creates a soft, unfocussed light and offers an output of up to 300 lumen. The ceiling fixture ensures the safe and secure installation of each piece and houses a multi-voltage transformer which allows the lights to be used in all markets.







/  
COLOUR  
VARIATIONS  
/

Although impressive as a single piece, Iris best achieves the fleeting aesthetic of soap bubbles when clustered in multiple sizes and colour variations. The incredible soap bubble effect remains even when the lamps are switched off providing a sculptural addition to its space in times when Iris is not in use as lighting.



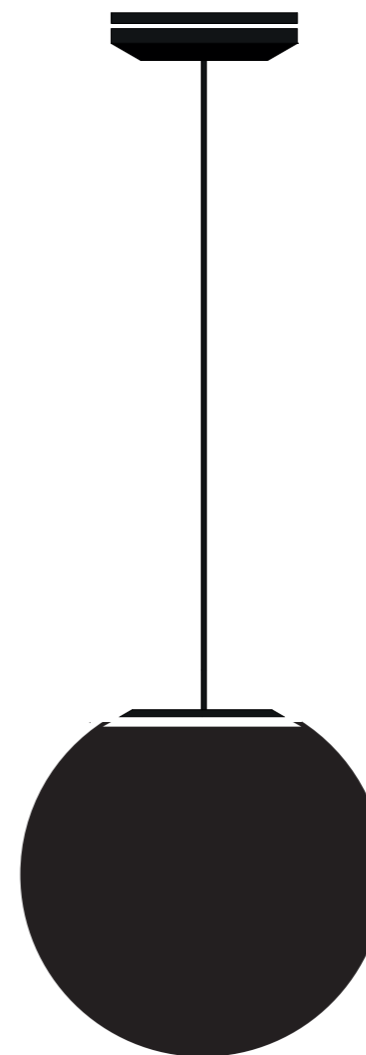


/  
TECHNICAL  
SPECS  
/

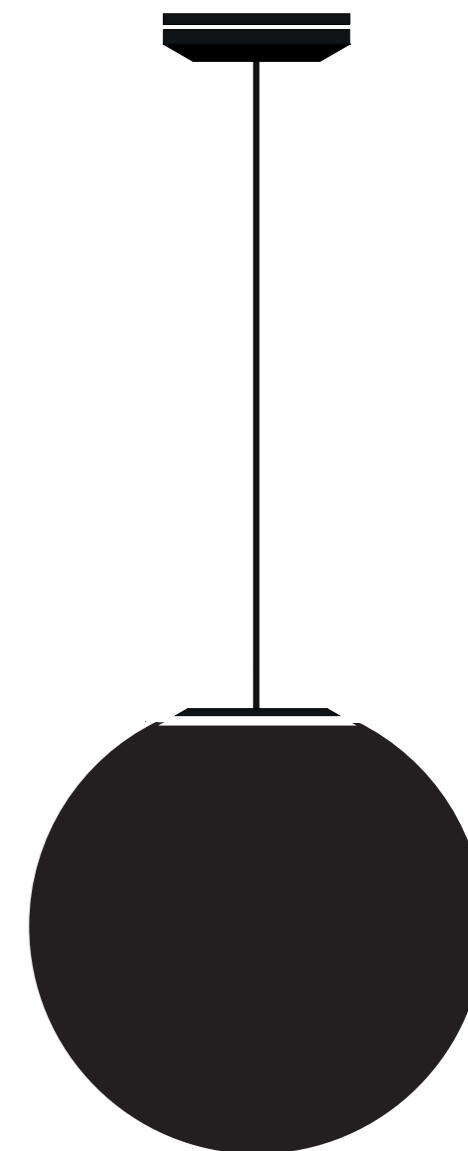
Year of design	2014
Material	Dichroic-coated mouth-blown glass, polished aluminium
Coating	Dichroic coated
Colours of coating	blue/orange cyan/magenta gold/indigo
OLED	250 mA / 7 W / 285 lm / 3000 K
Weight (kg)	Sphere 5,0 / 8,0 /11,0



Ø 30 CM



Ø 40 CM



Ø 50 CM