



Dr. Sticker®

Stickers.

Thank you for placing your order at Dr. Sticker.

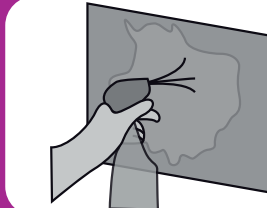
Follow the instructions of this guide to place your sticker the way you want it.

(The surface you are attaching the stickers to must have a temperature of at least 5 degrees Celsius, the higher the temperature, the faster the stickers adhere.)



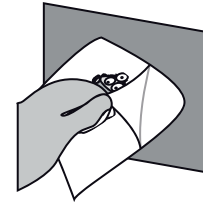
Make sure your surface is clean and free from fats and oils.

1



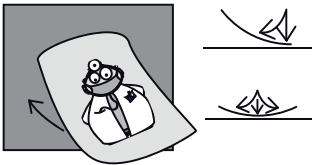
You can do this with water or even a drop of washing detergent, this helps to make it easier to place your sticker the way you want to.

2



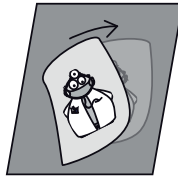
Pull off the back side of the sticker, so you got a transparent paper with the sticker.

3



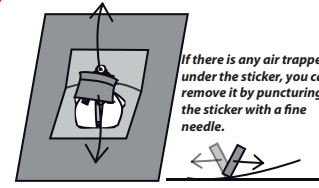
Place the sticker on the background, begin at the top. Press it from top to bottom until the sticky side of the sticker has been properly adhered to the surface.

4



Check that the sticker is attached properly. If it's not properly attached, adjust it carefully.

5



If there is any air trapped under the sticker, you can remove it by puncturing the sticker with a fine needle.

Press from the middle of the stickers to the outer edges to remove any air that is trapped under the sticker. If you put the sticker on a wet background, you should let it dry well. After two days it is eventually possible to clean.

6

If you might have bigger stickers, it could be handy to place the sticker with two persons at least.