



ABA clamps are manufactured according to ISO 14001. They can be reused many times thanks to their high and constant quality, which is continuously monitored according to our ISO 9000:2000 and ISO TS 16949 certifications.

As part of Engineered Joining Technology leader NORMA Group, the ABA brand enjoys the benefits of access to a large group working with multiple brands and subsidiaries worldwide.

## ABA Mini

Gentle and reliable forces for small dimensions

**New!**



### NORMA Sweden AB

Box 100, Visirgatan 1  
SE 334 22 Anderstorp, Sweden

Tel +46 371 58 88 00  
Fax +46 371 58 88 01

info@normagroup.com  
www.normagroup.com

ABA® is a registered trademark of NORMA Group

This folder supersedes all previous issues. No part of this publication may be reproduced without our prior written consent. In NORMA Group's policy of continual product improvements to meet user needs and technological developments, all models and sets listed in this folder (photographs, specifications, sizes and weights) may be upgraded or discontinued without notice and without any obligation on our part to modify tools or equipment sold previously. The recommendations for use and safety given in this folder do not replace accepted good practice or the safety-related legal and regulatory provisions. References to standards implemented at 01/02/2012 are not contractually binding.

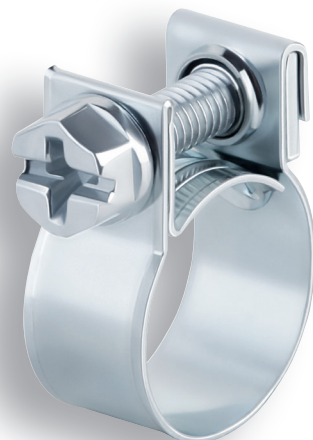
ABA Mini is particularly suitable for small thin-walled hoses. New pre-galvanized W1 clamp with combi slot screw.

ABA Mini features rolled-up band edges that are gentle on hoses. The band tongue that fits under the hose is profiled for added strength. Furthermore, the screw has a hexagonal head and can be tightened with a flexible socket. The nut is retained even if the screw is removed. The band is stamped with the ABA brand name and its size.

**New!**

## ABA Mini

W1, combi slot screw  
New pre-galvanized clamp.  
Combi slot screw permits use of various installation tools.



## ABA Mini

W4, cross slot screw  
Durable small clamp. Stainless steel construction is ideal for demanding environments.



Size	Part No.	Nominal Ø	Clamping range	Delivery Ø	A	Rec. max. tightening torque Nm
Mini 7	0810 0101 007	7	± 0.5	>7.5	13	1.5
Mini 8	0810 0101 008	8		>8.5		
Mini 9	0810 0101 009	9		>9.5		
Mini 10	0810 0101 010	10	+0.5 / -1	>10.5		
Mini 11	0810 0101 011	11		>11.5		
Mini 12	0810 0101 012	12	+0.5 / -1.5	>12.5	16	
Mini 13	0810 0101 013	13		>13.5		
Mini 14	0810 0101 014	14		>14.5		
Mini 15	0810 0101 015	15	+0.5 / -2	>15.5	20	
Mini 16	0810 0101 016	16		>16.5		
Mini 17	0810 0101 017	17		>17.5		

Size	Part No.	Nominal Ø	Clamping range	Delivery Ø	A	Rec. max. tightening torque Nm
Mini 8	0810 0002 008	8	± 0.5	>8.5	13	1.5
Mini 9	0810 0002 009	9		>9.5		
Mini 10	0810 0002 010	10		>11		
Mini 11	0810 0002 011	11	+1 / -0.5	>12	16	
Mini 12	0810 0002 012	12		>13		
Mini 13	0810 0002 013	13		>14		
Mini 14	0810 0002 014	14		>15		
Mini 15	0810 0002 015	15	± 1	>16	20	
Mini 16	0810 0002 016	16		>17		
Mini 17	0810 0002 017	17		>18		

	Material	Surface treatment
Screw M4	EN 10263-4 19MnB4 / 20MnB4	Fe/Zn 10 C1
Nut	EN 10130- DC01 / DC03	Fe/Zn 10 C1
Band	HX 340 LAD + Z	Double side zink-coated
All components free of Cr6		

	Material	Surface treatment
Screw M4	EN 10088-2- 1.4301 (A2-70) or equivalent steel	Zn 5 (only as lubrication)
Nut	EN 10088-2- 1.4301 or equivalent steel	
Band	EN 10088-2- 1.4301 or equivalent steel	
All components free of Cr6		

