



# RED Winches

## COBRA - SINGLE MOTOR WINCH WORKSHOP MANUAL WITH DRAWINGS

- SHEET 1: FRONT COVER
- SHEET 2: DIMENSIONS
- SHEET 3: FUNCTIONS
- SHEET 4: MOUNTING OPTIONS
- SHEET 5: EXPLODED VIEW
- SHEET 6: ELECTRICAL SETUP
- SHEET 7: PARTS LIST
- SHEET 8: LUBRICATION



This winch is part of a group of winches whose designs have undergone extensive testing. The end user can now enjoy a professional highly engineered high performance electric winch capable of operating in the most demanding of situations. The small compact size combined with its pulling power make it an ideal winch for maximum impact when faced with minimal installation space.

**RED Winches**

[www.red-winch.com](http://www.red-winch.com)  
ULTIMATE PERFORMANCE PRODUCTS

TITLE **REDWINCH COBRA - WORKSHOP MANUAL**

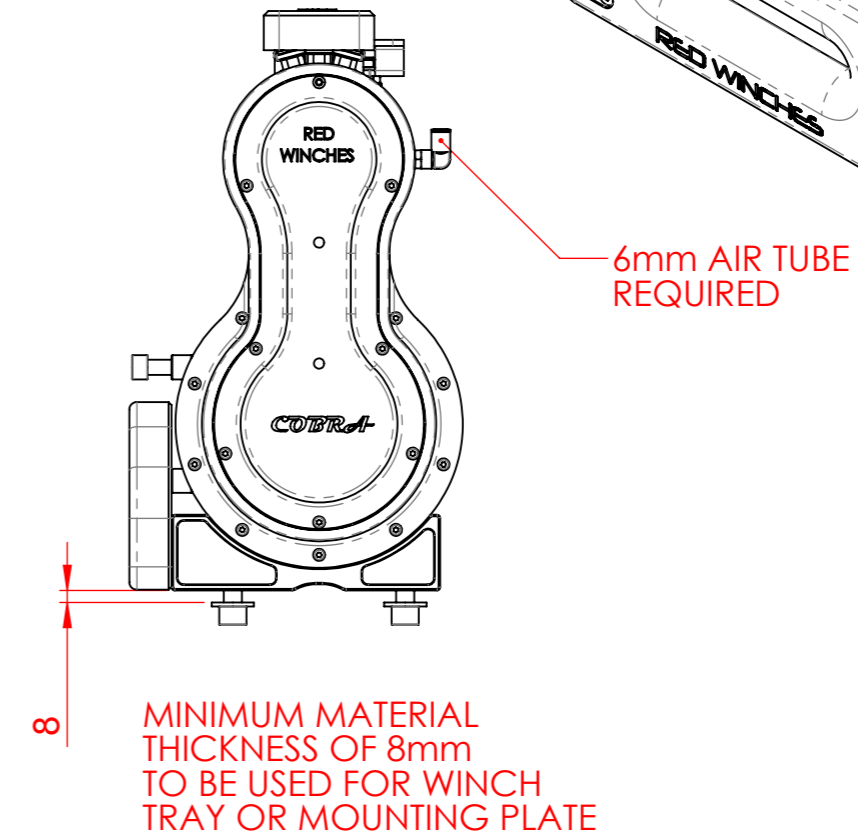
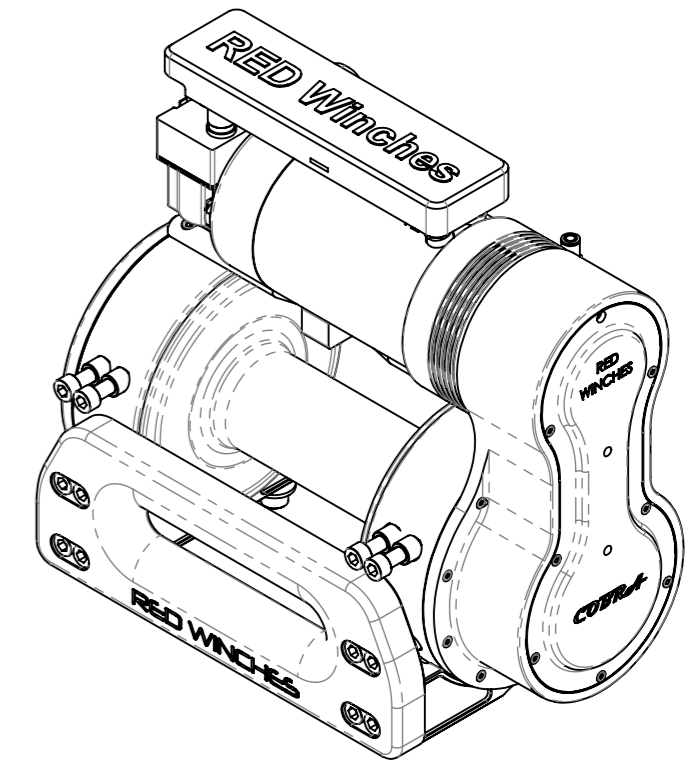
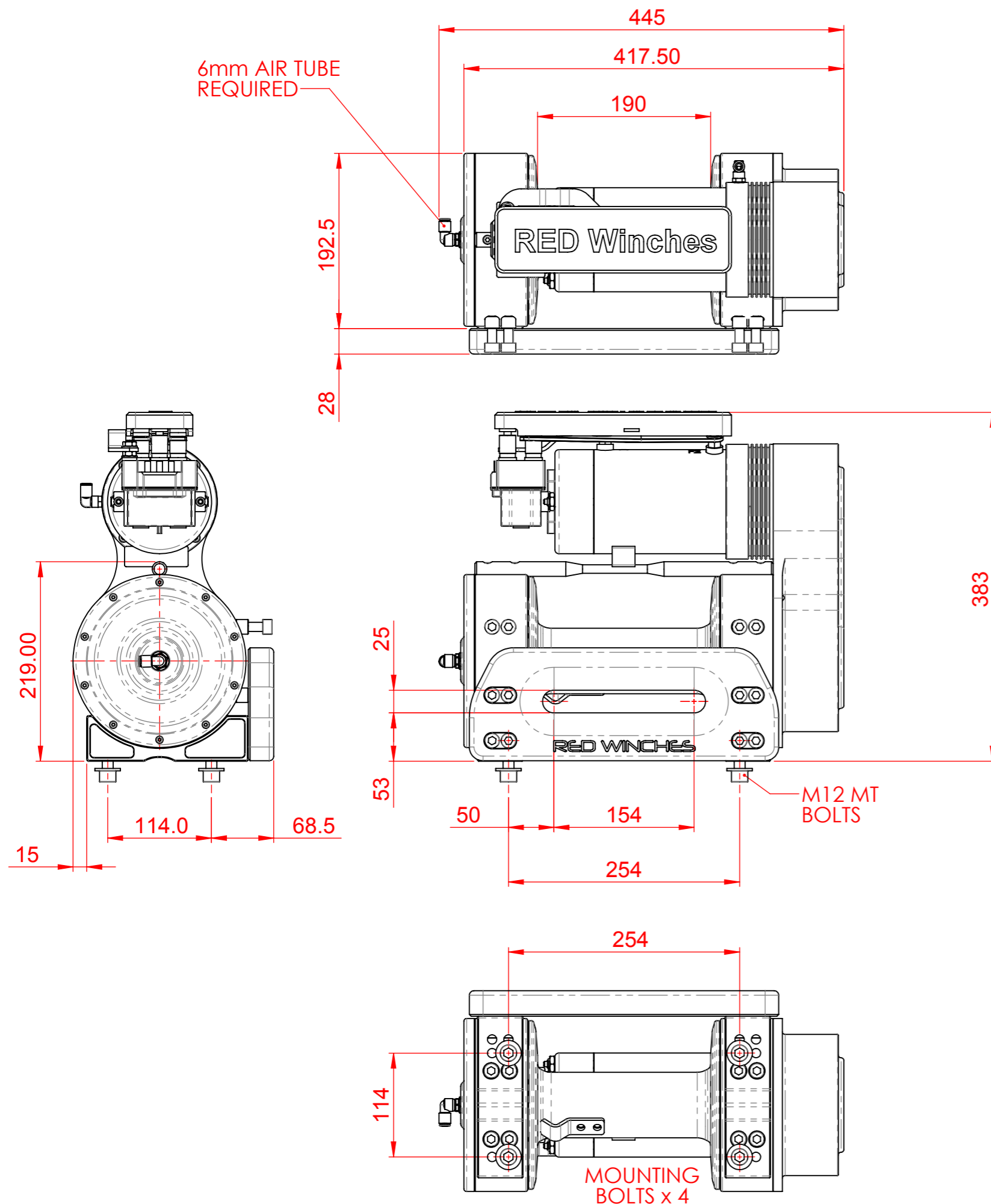
Telephone: +44 (0)1460 67744  
Email: [sales@red-winch.com](mailto:sales@red-winch.com)

DRAWING NUMBER:  
COBRA-MANUAL-01

SCALE  
1:3  
SHT 1  
OF 8

Drawing not to be reproduced or distributed in any format or method without specific permission from Redstart/Design.

REV.	DATE	DESCRIPTION	CHANGED BY
A	01/09/2014	PRODUCTION ISSUE	NJ



NETT WEIGHT: 38 Kg  
PACKED WEIGHT: 50Kg

ENSURE ALL FASTENERS ARE TORQUED TO THE CORRECT VALUES

LOCTITE 234 (THREADLOCKER) TO BE APPLIED ON ALL FASTENERS WHEN WINCH IS FITTED

UNLESS SPECIFIED	
FASTENER	TORQUE
M6	10 Nm
M8	24 Nm
M10	45 Nm
M12	80 Nm
M16	160 Nm
M20	200 Nm

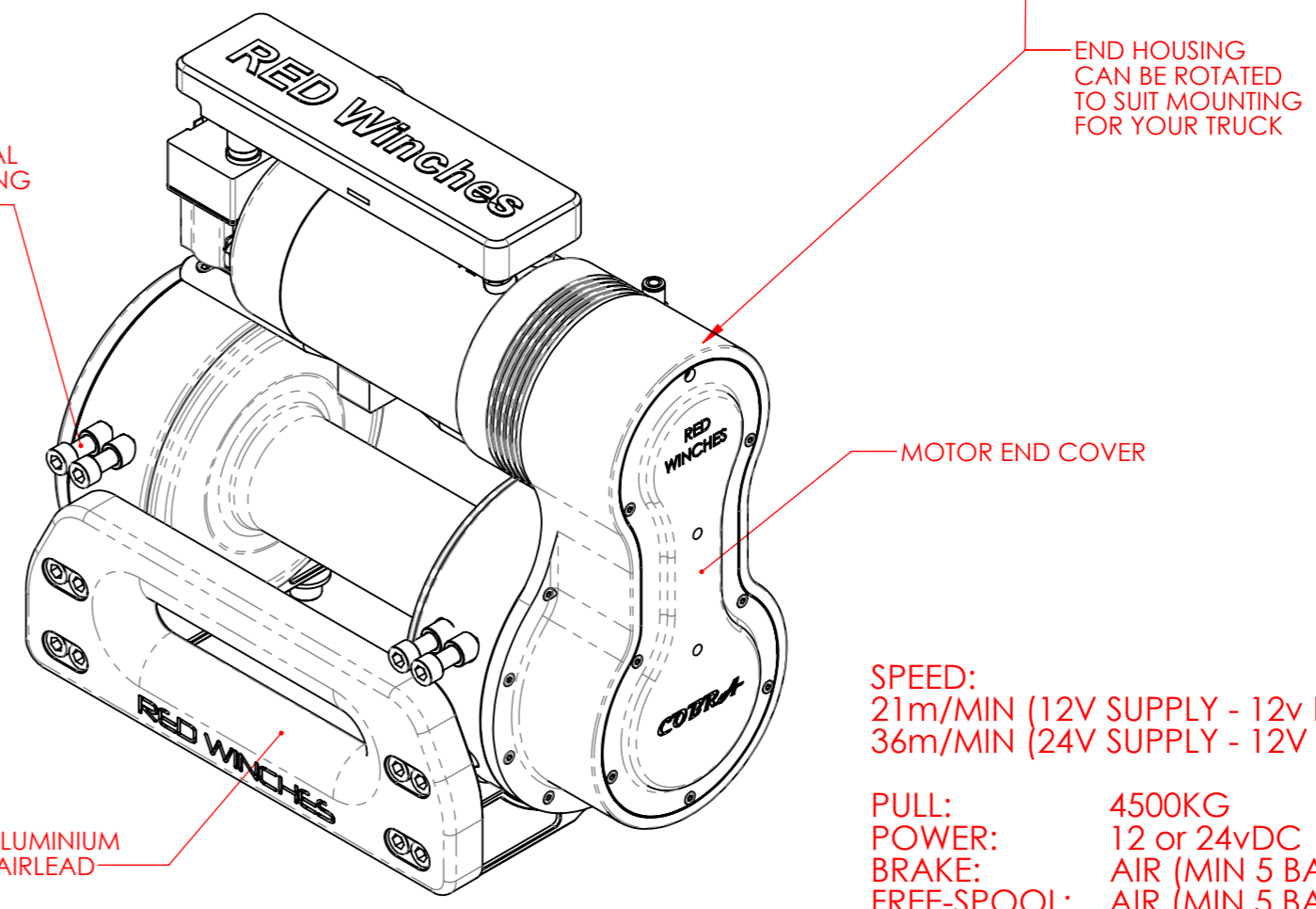
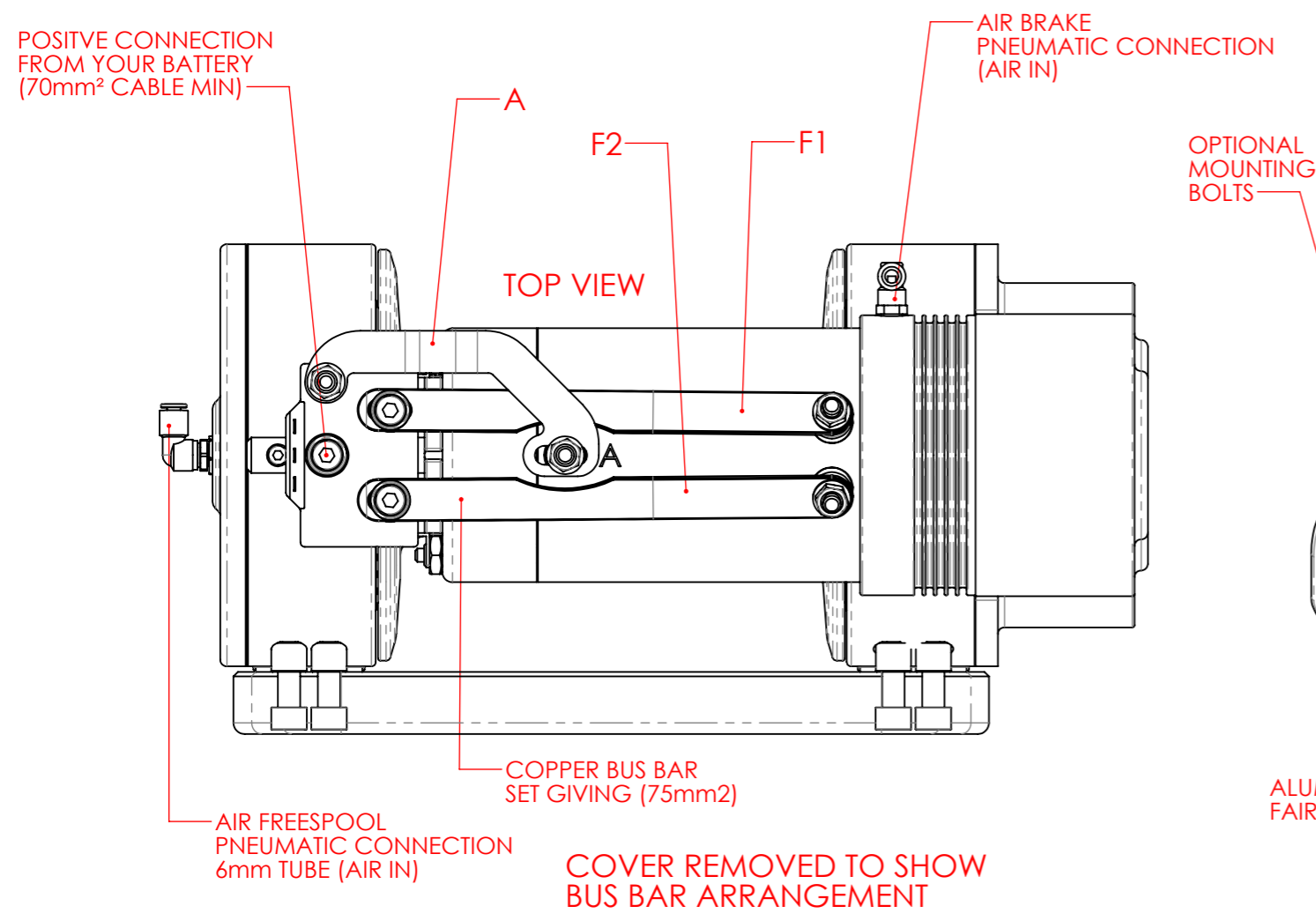
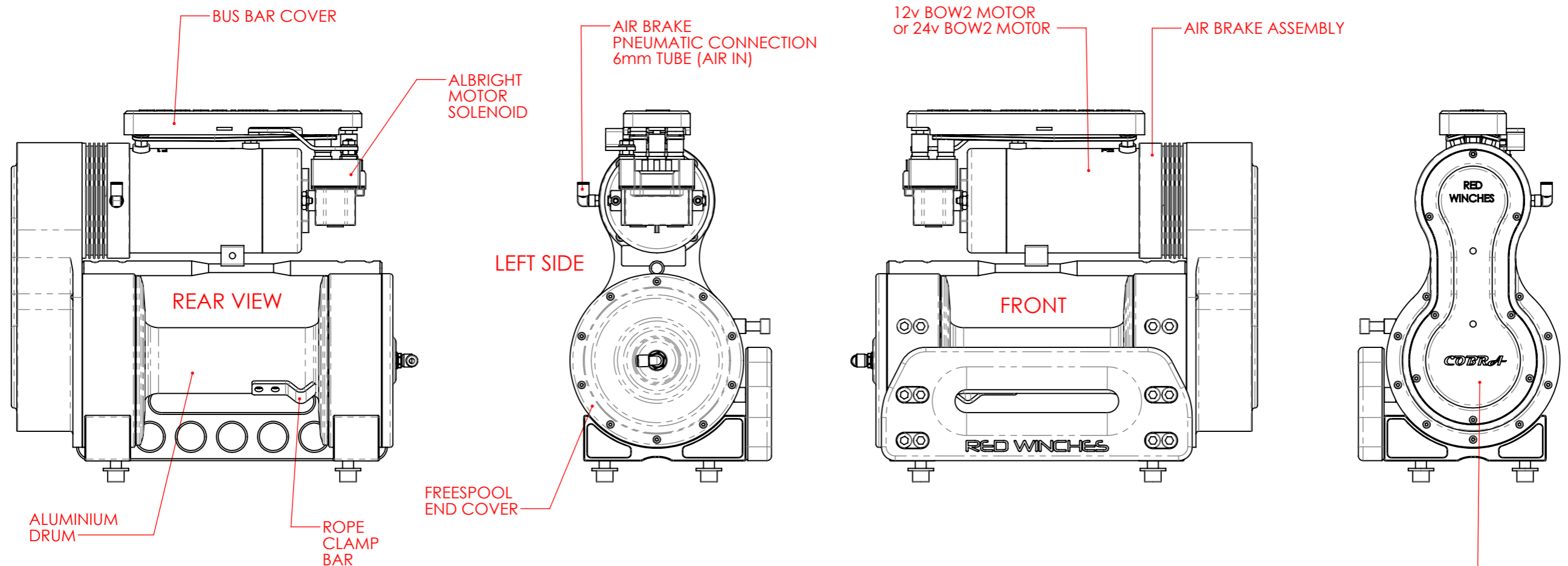
TITLE **RED WINCH COBRA - DIMENSIONS / LAYOUT**

Telephone: +44 (0)1460 67744  
Email: sales@red-winches.com

**RED Winches** [www.red-winches.com](http://www.red-winches.com)  
ULTIMATE PERFORMANCE PRODUCTS

DRAWING NUMBER: **COBRA-MANUAL-01** SCALE: **1:5** SHT 2 OF 8

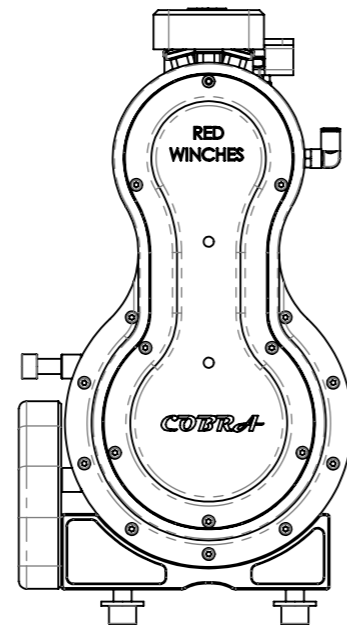
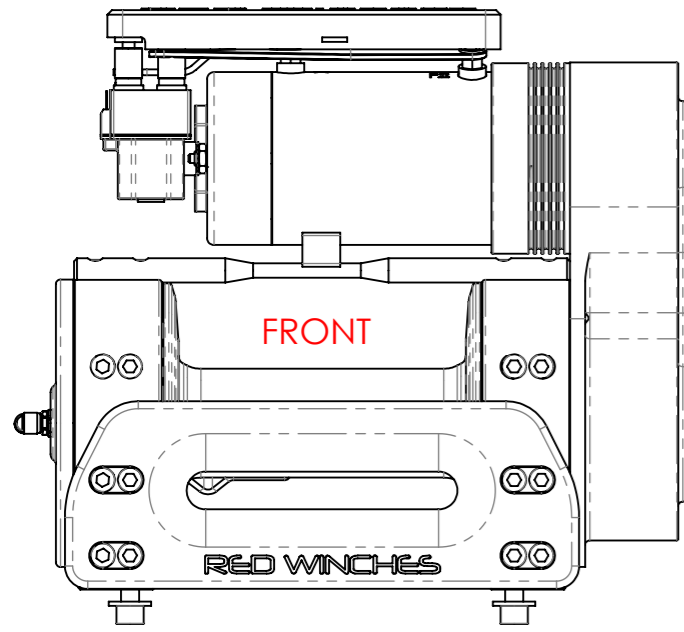
Drawing not to be reproduced or distributed in any format or method without specific permission from Redstart/Design.



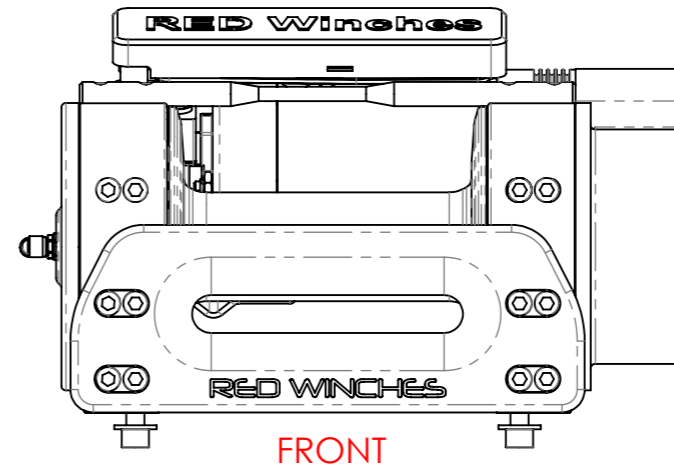
**SPEED:**  
 21m/MIN (12V SUPPLY - 12v BOW 2)  
 36m/MIN (24V SUPPLY - 12V BOW 2)

**PULL:** 4500KG  
**POWER:** 12 or 24vDC  
**BRAKE:** AIR (MIN 5 BAR - 70psi)  
**FREE-SPOOL:** AIR (MIN 5 BAR - 70psi)

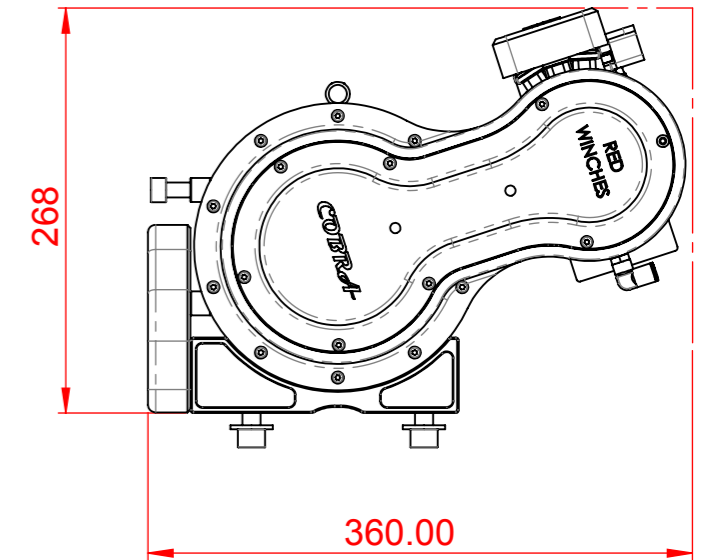
**RED Winches** [www.red-winches.com](http://www.red-winches.com)  
 ULTIMATE PERFORMANCE PRODUCTS



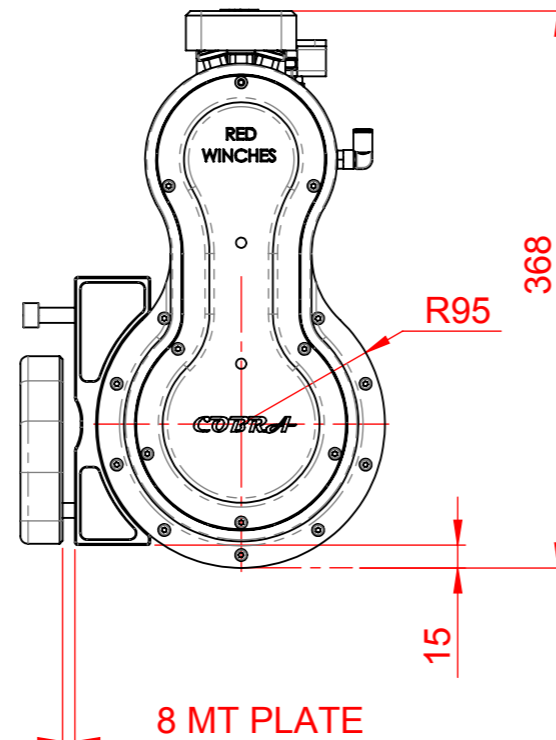
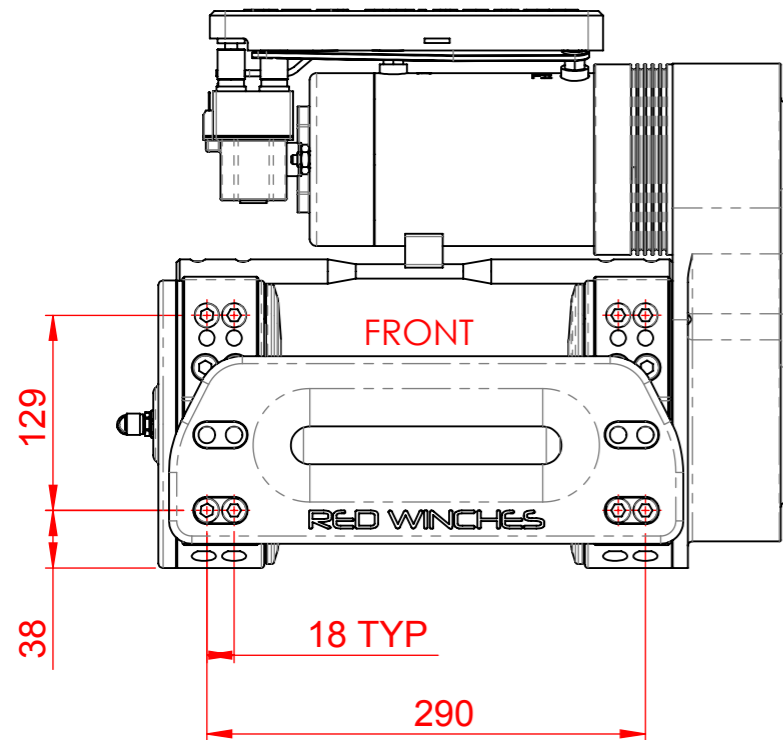
NORMAL ARRANGEMENT



LAY FLAT ARRANGEMENT



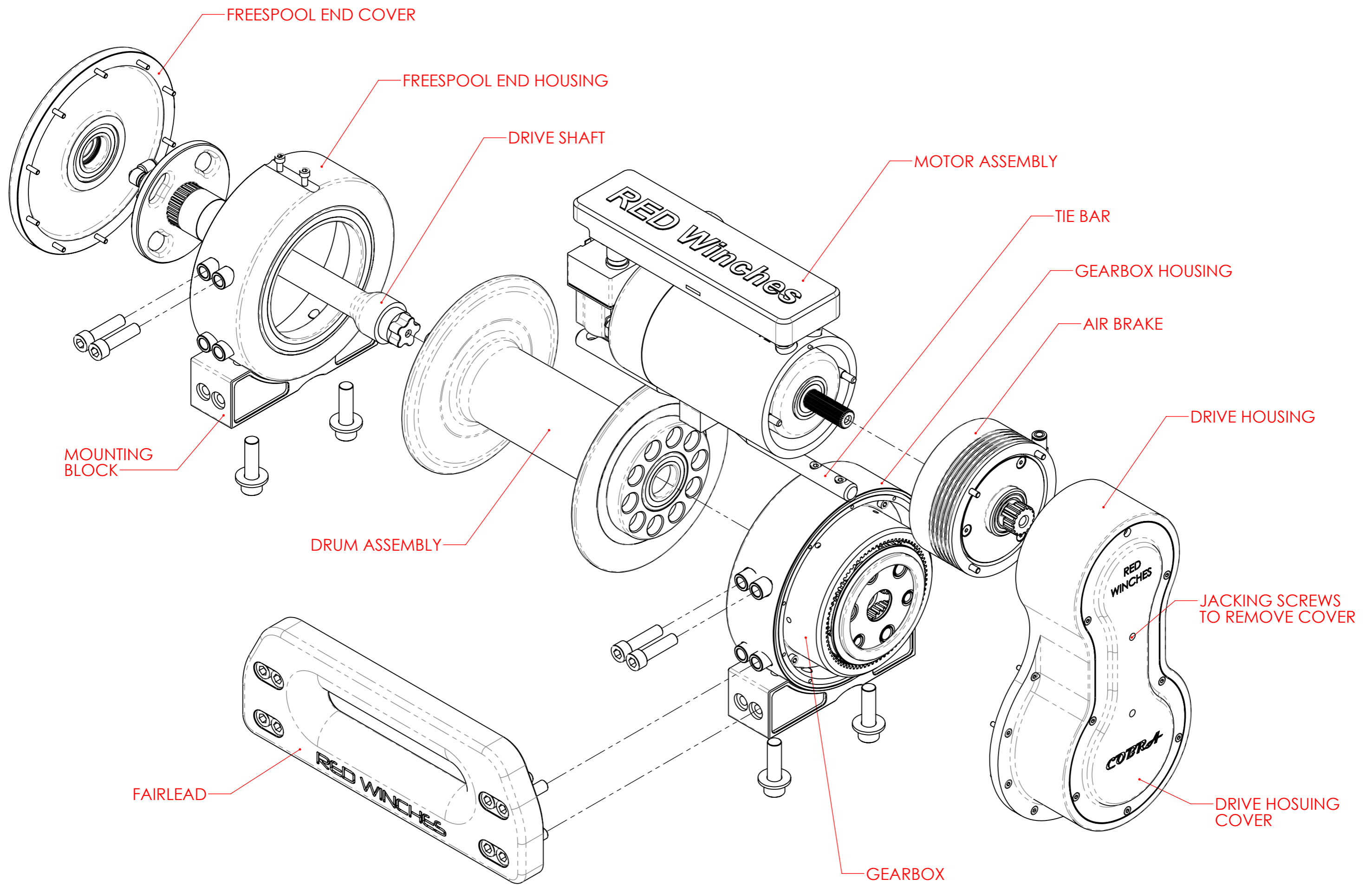
FRONT MOUNT ARRANGEMENT



TITLE **RED WINCH COBRA - MOUNTING SETUPS**

Telephone: +44 (0)1460 67744  
Email: sales@red-winches.com

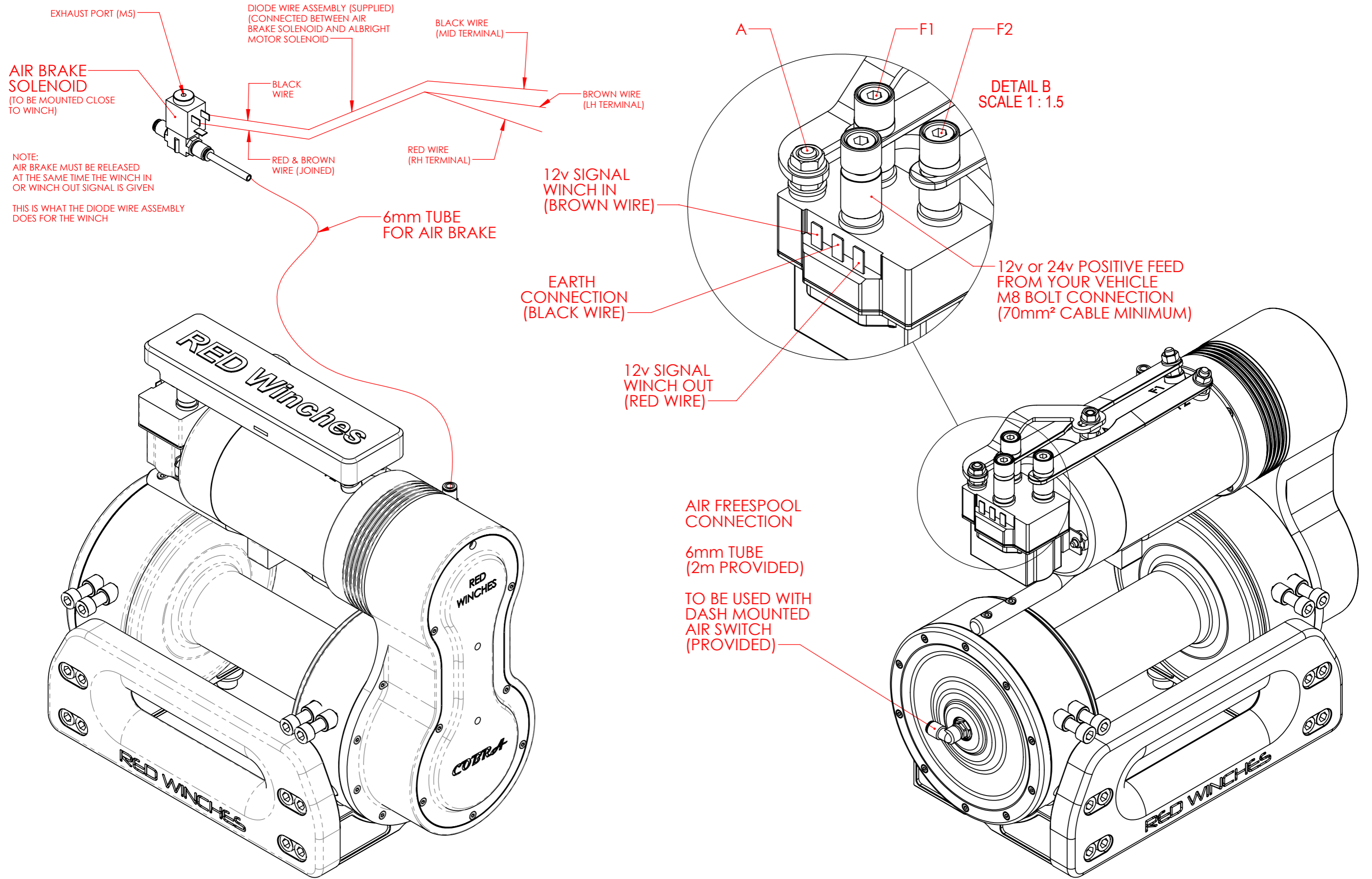
<b>RED Winches</b>	<a href="http://www.red-winches.com">www.red-winches.com</a>	
	ULTIMATE PERFORMANCE PRODUCTS	
DRAWING NUMBER: <b>COBRA-MANUAL-01</b>	SCALE: <b>1:2</b>	SHT 4 OF 8
Drawing not to be reproduced or distributed in any format or method without specific permission from Redstart/Design.		



**TITLE**    **RED WINCH COBRA - EXPLODED VIEW**

Telephone: +44 (0)1460 67744  
 Email: sales@red-winches.com

<b>RED Winches</b> <small>www.red-winches.com</small> <small>ULTIMATE PERFORMANCE PRODUCTS</small>	<small>DRAWING NUMBER:</small> <b>COBRA-MANUAL-01</b>	<small>SCALE</small> <b>1:3</b>	<small>SHT</small> <b>5</b> <small>OF</small> <b>8</b>
	<small>Drawing not to be reproduced or distributed in any format or method without specific permission from Redstart/Design.</small>		



**TITLE**    **RED WINCH COBRA - HOW TO OPERATE**

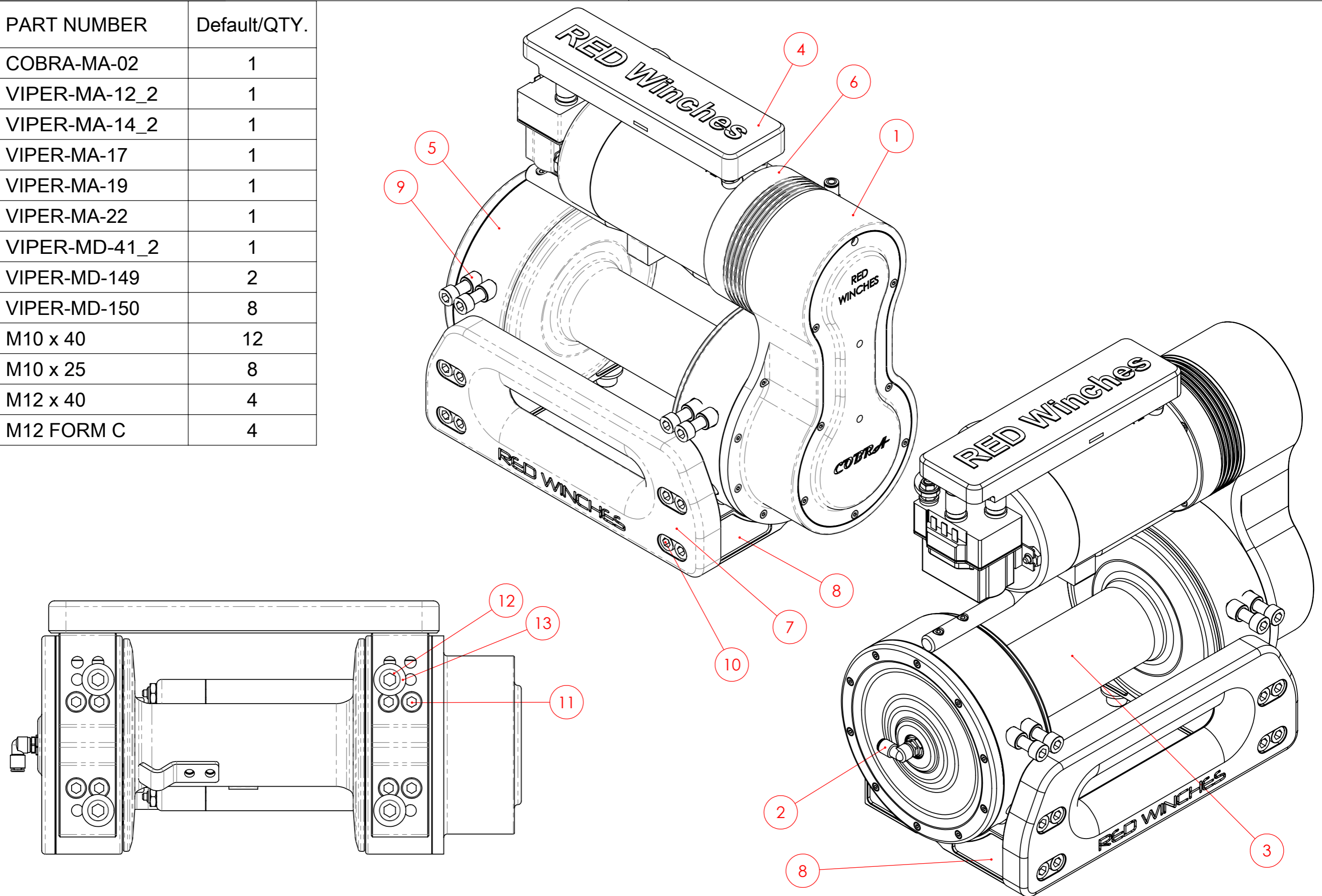
Telephone: +44 (0)1460 67744  
 Email: sales@red-winches.com

**RED Winches**    www.red-winches.com  
 ULTIMATE PERFORMANCE PRODUCTS

DRAWING NUMBER: COBRA-MANUAL-01    SCALE: 1:3    SHT 6 OF 8

Drawing not to be reproduced or distributed in any format or method without specific permission from Redstart/Design.

ITEM NO.	PART NUMBER	Default/QTY.
1	COBRA-MA-02	1
2	VIPER-MA-12_2	1
3	VIPER-MA-14_2	1
4	VIPER-MA-17	1
5	VIPER-MA-19	1
6	VIPER-MA-22	1
7	VIPER-MD-41_2	1
8	VIPER-MD-149	2
9	VIPER-MD-150	8
10	M10 x 40	12
11	M10 x 25	8
12	M12 x 40	4
13	M12 FORM C	4



TITLE **RED WINCH COBRA - PARTS LIST**

Telephone: +44 (0)1460 67744  
 Email: sales@red-winches.com

<b>RED Winches</b>	www.red-winches.com	
	ULTIMATE PERFORMANCE PRODUCTS	
DRAWING NUMBER: COBRA-MANUAL-01	SCALE: 1:3	SHT 7 OF 8
Drawing not to be reproduced or distributed in any format or method without specific permission from Redstart/Design.		

# Lubrication Details

**Grease Specification: Gearbox**  
**Castrol Spherol L-EP 2 or BP Energrease LS-EP 2**

**Grease Specification: Freespool Shaft**  
**Duck Oil for internal Piston**  
**Copper Grease for External Spline**

As a guide Grease must be applied to the gears in the end housing and air freespool clutch plate as per the following:

The lubrication frequency is based on constant winch usage in hours per month:

- 1-4 Hrs - Add grease and cover gears every 6 Months
- 4-12 Hrs - Add grease and cover gears every 4 Months

This is based on dry above water level conditions.  
If winch has been used within water or wet muddy ground for more than 50% of the hours specified the greasing frequency needs to be increased to half of those shown in the above chart.  
Every 12 months the internals of the winch gearbox and freespool should be cleaned and the grease should be replaced.

**Important:** Freespool must be cleaned and internal parts sprayed with duck oil after the winch has been submerged in mud or water for long periods of time. The gearbox must also be inspected for water ingress and greased if necessary.

<b>RED Winches</b>		www.red-winches.com <small>ULTIMATE PERFORMANCE PRODUCTS</small>			
<b>TITLE</b>	<b>DESCRIPTION OF PRODUCT / DRAWING / PROCESS / ASSEMBLY IF APPLICABLE - VEHICLE TYPE ALSO LISTED</b>	Telephone: +44 (0)1460 67744 Email: sales@red-winches.com	DRAWING NUMBER: COBRA-MANUAL-01	SCALE 1:3	SHT 8 OF 8
<small>Drawing not to be reproduced or distributed in any format or method without specific permission from Redstart/Design.</small>					