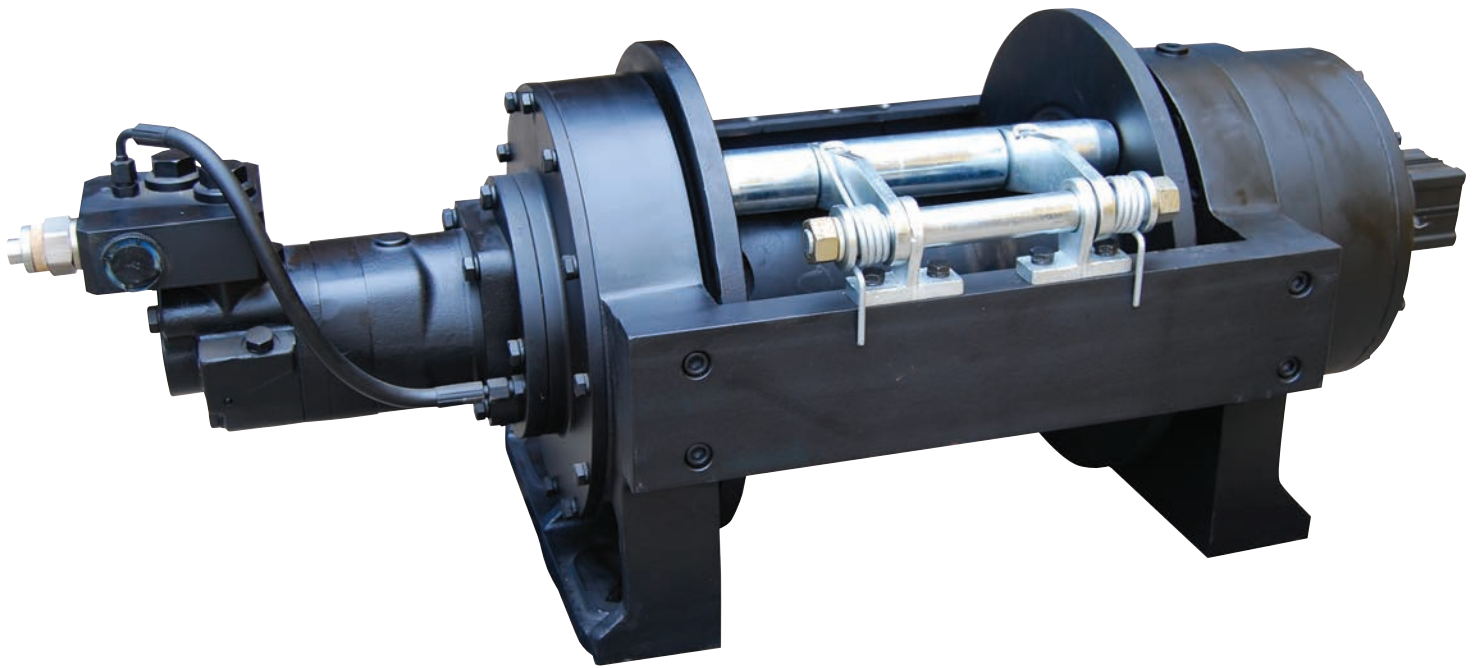




JP SERIES

INDUSTRIAL HYDRAULIC WINCHES

Tough and compact, the JP series are heavy duty hydraulic winches designed and tested for toughest applications. Minimum rope to drum ratio of 10:1, multi disc frictional brake, balance valve and rope tensioner as standard. Available from 10 tonne to 40 tonne . Manufactured to meet GJB82-86 National Military Standard.



OUTSTANDING FEATURES

- Full Float Heavy Duty Planetary Gearing
- Multi Disc Friction Brake
- High Torque Industrial Motor
- Air and Manual Clutch Operation
- Heavy Duty Rope Tensioner as Standard
- Minimum 10:1 Rope/Drum Ratio
- Balance Valve as Standard

SPECIFICATIONS

	C13.5JP	C15JP	C20JP	C30JP	C40JP
RATED LINE PULL (bottom layer):	13 500kg	15 000kg	20 000kg	30 000kg	40 000kg
WORKING SPEED (bottom layer):	7.5 m/min	6 m/min	6 m/min	5.5 m/min	3 m/min
RESPONSE PRESSURE OF ARRESTER:	<2.5 Mpa	<2.5 Mpa	<2.5 Mpa	<2.5 Mpa	<2.5 Mpa
WORKING PRESSURE:	17 Mpa	17 Mpa	17 Mpa	17 Mpa	17 Mpa
OIL FLOW:	110 L/min	110 L/min	120 L/min	120 L/min	120 L/min
DRUM SIZE:	400x210x340mm	400x210x340mm	532x210x340mm	530x280x360mm	600x280x480mm
RECOMMENDED ROPE SIZE:	40mx18mm	70mx22mm	60mx26mm	60mx32mm	65mx36mm
WEIGHT:	262kg	285kg	295kg	570kg	800kg