



### Application

- To transfer clean water with liquid temperature between 0°C and 40°C
- Applicable in water supply and drainage for factories, mines, municipal facilities as well as field irrigation, etc.

### Features

- New unique design with ergonomic feature
- Portable and compact pump frame
- High quality motor with excellent performance and long service life
- Impeller designed with high efficient hydraulic system
- Low fuel consumption

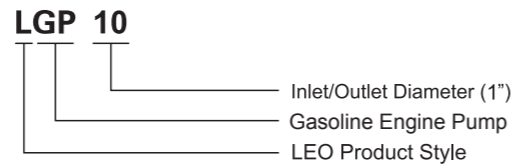
### Pump

- Anti-rust cast iron impeller and diffuser
- Max. suction: 8 m/120 s
- Inlet/outlet: 25 mm/38 mm

### Engine

- Single cylinder, 2-stroke, Air-cooled
- Max. power: 1.6 HP
- Displacement: 42.7 cc
- Rated speed: 7500 rpm

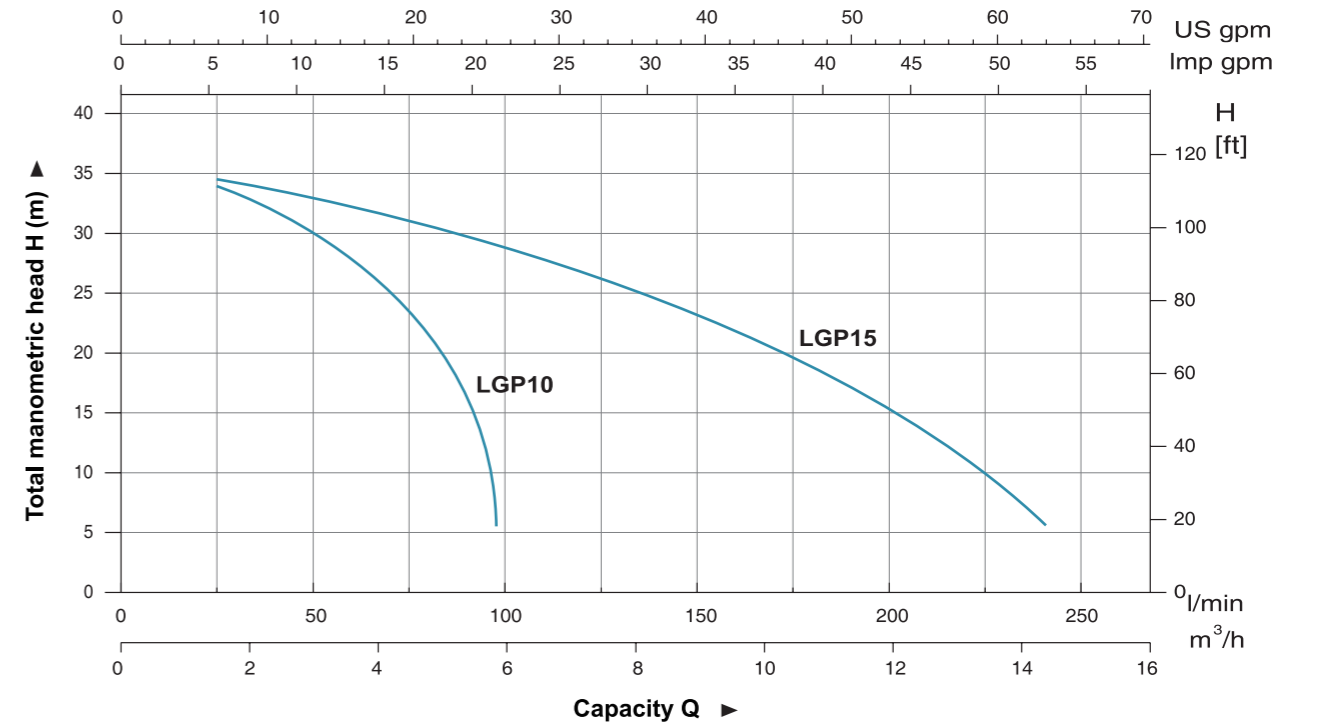
### Identification Codes



### Technical Data

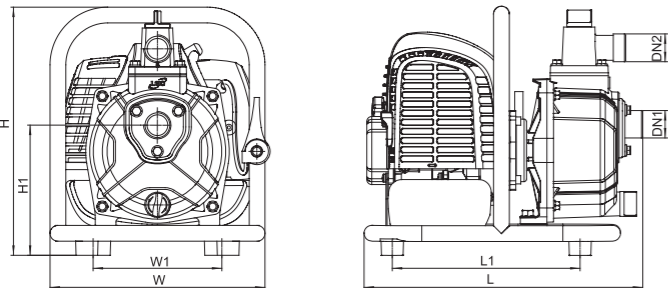
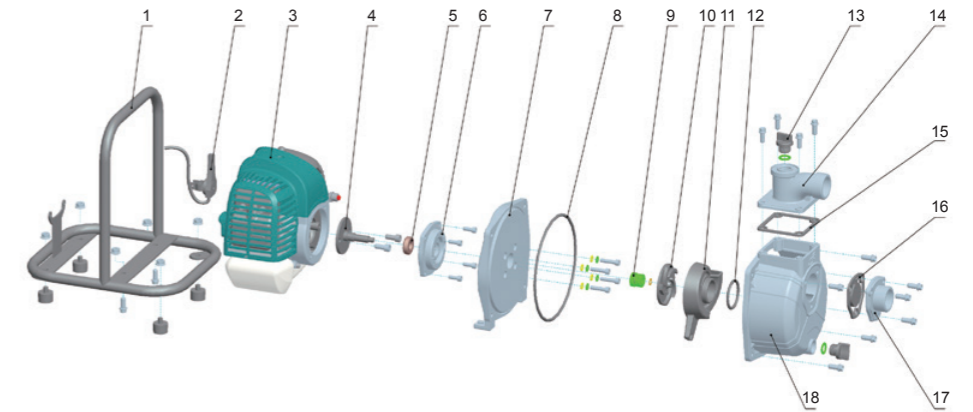
MODEL	POWER HP	Q (m <sup>3</sup> /h) Q (l/min)	H (m)								
			0	2	4	6	8	10	12	14	16
LGP10	1.6		35	34	26	-	-	-	-	-	-
LGP15	1.6		35	34.5	32.5	29	25.5	20.5	12.1	6.5	-

### Hydraulic Performance Curves



### Materials Table

No.	Part	Material
1	Frame	Steel
2	Throttle trigger	
3	Engine	
4	Crankshaft	
5	Bearing	
6	Seat connection	Aluminum
7	Pump cover	Aluminum
8	O-ring	NBR
9	Mechanical seal	Carbon/Ceramic
10	Impeller	HT200
11	Diffuser	HT200
12	O-ring	NBR
13	Plug	PP
14	Outlet	Aluminum
15	Seal	NBR
16	Non-return valve	NBR
17	Inlet	Aluminum
18	Pump body	Aluminum



### Dimension

Model	DN1	DN2	L (mm)	W (mm)	H (mm)	L1 (mm)	W1 (mm)	H1 (mm)
LGP10	1"	1"	336	279	300	217.5	155	157
LGP15	1 1/2"	1 1/2"	344	279	345	233	175	144

### Package Information

Model	GW (Kgs)	L (mm)	W (mm)	H (mm)	Quantity (PCS/20 TEU)
LGP10	8.1	350	290	325	896
LGP15	8.3	355	290	370	768

