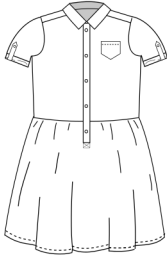


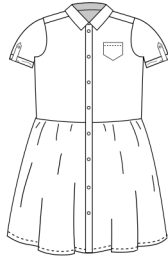
# UME PATTERN: SIZE CHART, MATERIALS, AND YARDAGE TABLES

## OVERVIEW OF OPTIONS

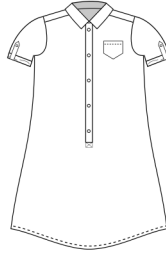
### Dress x placket options



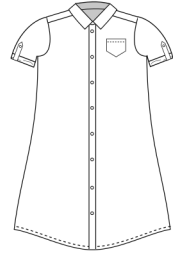
party dress w.  
popover placket



party dress w.  
classic placket



shift dress w.  
popover placket



shift dress w.  
classic placket

### Collar options



pointy collar



rounded collar



bow collar

### Sleeve options



short sleeves

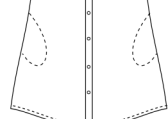


long sleeves

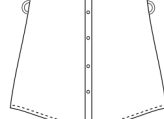
### Extras



breast pocket



in-seam pockets



belt loops

## MATERIALS

- **Fabric:** use light- or midweight wovens (e.g. cotton, linen, lawn, gauze, chambray, ...).
- **Thin fusible interfacing:** to reinforce the collar, collar stand, button plackets, sleeve tabs.
- **Buttons/snaps, max. 1 cm (3/8")** in diameter. Table below *includes* 2 buttons for sleeve tabs (optional), and 1 for the collar stand (which you do not need if making the bow collar).

number of buttons	1Y	18M	2Y	3Y	4-5Y	6Y	7Y	8Y	9-12Y
party dress, classic placket	9	9	10	10	11	11	12	12	13
party dress, popover placket	6	6	6	6	6	6	7	7	7
shift dress, classic placket	8	9	9	10	10	11	11	12	12
shift dress, popover placket	6	6	6	6	6	6	7	7	7



