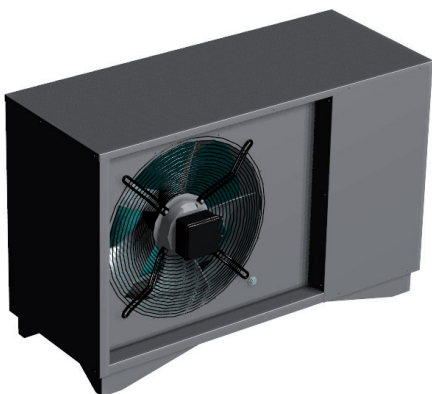




AiroteQ warmtepompen
Duurzaam uw huis verwarmen

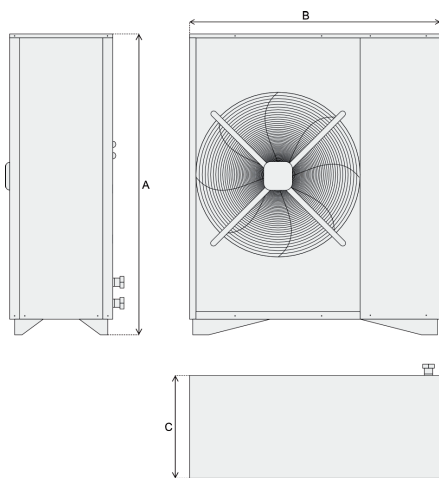
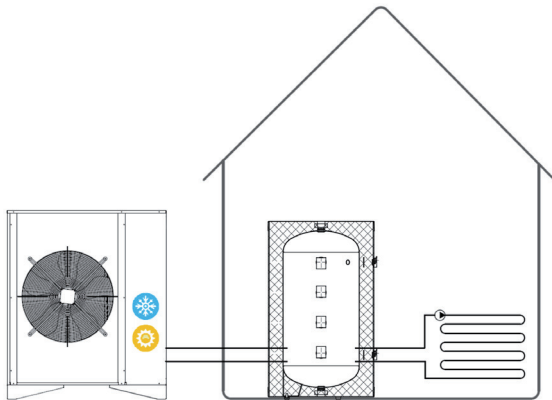
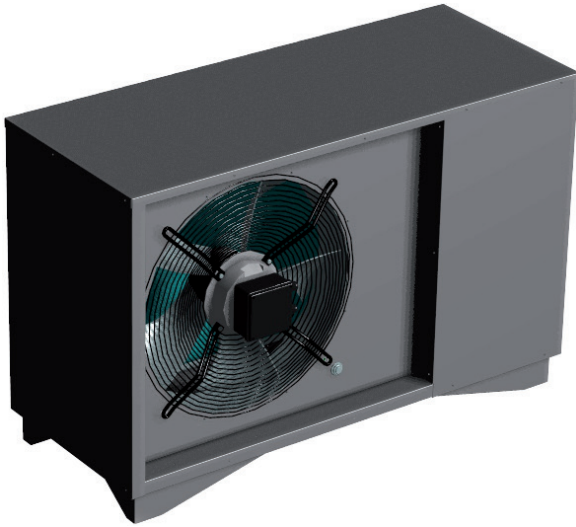


AiroteQ
heatpump series

TechniQ Energy AiroteQ 6 / 9 / 14 kW

monobloc warmtepomp TQE-AIR-6 | TQE-AIR-9 | TQE-AIR-14

AiroteQ
heatpump series



	6 kW	9 kW	14 kW
A (mm)	720	1321	1321
B (mm)	1100	1102	1232
C (mm)	450	452	452

		AiroteQ 6 kW	AiroteQ 9 kW	AiroteQ 14 kW
Aanvoer	V/HZ/Ph	230/50/1+N	230/50/1+N	400/50/3+N
Type compressor		ROTARY BLDC	ROTARY BLDC	ROTARY BLDC
Aantal compressors	Aantal	1	1	1
Modulerend vermogen	%	20 tot 100	20 tot 100	20 tot 100
Koelcircuits	Aantal	1	1	1
Hoeveelheid koelmiddel	Kg	1.8	3.0	5.2
Wisselaar gas - water		Gesoldeerde plaat	Gesoldeerde plaat	Gesoldeerde plaat
Wisselaar gas - lucht		Aluminium vinnen met hydrofiel koper	Aluminium vinnen met hydrofiel koper	Aluminium vinnen met hydrofiel koper
Aantal wisselaars	Aantal	1	1	1
Flow (water)	l/h	1200	1650	2500
Max. temperatuur	°C	53	53	53
Aansluitingen water		1 1/4" F	1 1/4" F	1 1/4" F
Max. druk waterkant	kPa	550	550	550
Opslagcapaciteit	Liter	-	-	-
Expansievat	Liter	-	-	-
Type fan		Axiaal	Axiaal	Axiaal
Flow (lucht)	m³/h	0-3400	0-4000	0-5800
Input	W	0-135	0-160	0-230

		AiroteQ 6 kW	AiroteQ 9 kW	AiroteQ 14 kW
Bedrijfstemperatuur	Input / Output / COP (%)	Input / Output / COP (%)	Input / Output / COP (%)	Input / Output / COP (%)
A-8 / W35	0.5 / 1.4 / 2.7 (33%) 1.0 / 2.8 / 2.8 (66%) 1.5 / 4.1 / 2.7 (100%)	1.0 / 2.7 / 2.7 (33%) 2.0 / 5.6 / 2.8 (66%) 3.0 / 8.1 / 2.7 (100%)	2.1 / 6.1 / 2.9 (33%) 3.1 / 9.3 / 3.0 (66%) 4.7 / 13.6 / 2.9 (100%)	
A-5 / W35	0.5 / 1.5 / 3.0 (33%) 1.0 / 3.1 / 3.1 (66%) 1.5 / 4.5 / 3.0 (100%)	1.0 / 3.0 / 3.0 (33%) 2.0 / 6.2 / 3.1 (66%) 3.0 / 9.0 / 3.0 (100%)	2.1 / 6.7 / 3.2 (33%) 3.1 / 10.2 / 3.3 (66%) 4.7 / 15.0 / 3.2 (100%)	
A2 / W35	0.5 / 1.8 / 3.6 (33%) 1.0 / 3.7 / 3.7 (66%) 1.5 / 5.4 / 3.0 (100%)	1.0 / 3.6 / 3.6 (33%) 2.0 / 7.4 / 3.7 (66%) 3.0 / 10.8 / 3.6 (100%)	2.1 / 8.0 / 3.8 (33%) 3.1 / 12.1 / 3.9 (66%) 4.7 / 17.9 / 3.8 (100%)	
A7 / W35	0.5 / 2.1 / 4.1 (33%) 1.0 / 4.2 / 4.2 (66%) 1.5 / 7.1 / 4.7 (100%)	1.0 / 4.1 / 4.1 (33%) 2.0 / 8.4 / 4.2 (66%) 3.0 / 12.3 / 4.1 (100%)	2.1 / 9.0 / 4.3 (33%) 3.1 / 13.6 / 4.4 (66%) 4.7 / 20.2 / 4.3 (100%)	
A12 / W35	0.5 / 2.4 / 4.7 (33%) 1.0 / 4.8 / 4.8 (66%) 1.5 / 7.1 / 4.7 (100%)	1.0 / 5.1 / 5.1 (33%) 2.0 / 10.4 / 5.2 (66%) 3.0 / 15.3 / 5.1 (100%)	2.1 / 10.9 / 5.2 (33%) 3.1 / 16.4 / 5.3 (66%) 4.7 / 24.4 / 5.2 (100%)	
A-5 / W50	0.7 / 1.1 / 1.5 (33%) 1.3 / 2.4 / 1.6 (66%) 2.0 / 3.0 / 1.5 (100%)	1.1 / 1.8 / 1.6 (33%) 2.4 / 4.1 / 1.7 (66%) 3.7 / 6.0 / 1.6 (100%)	2.4 / 4.1 / 1.7 (33%) 3.6 / 6.5 / 1.8 (66%) 5.5 / 9.4 / 1.7 (100%)	
A2 / W50	0.7 / 1.5 / 2.1 (33%) 1.3 / 2.9 / 2.2 (66%) 2.0 / 4.2 / 2.1 (100%)	1.2 / 2.5 / 2.1 (33%) 2.5 / 5.5 / 2.2 (66%) 3.8 / 8.0 / 2.1 (100%)	2.5 / 5.8 / 2.3 (33%) 3.7 / 8.9 / 2.4 (66%) 5.6 / 12.9 / 2.3 (100%)	
A7 / W50	0.8 / 2.1 / 2.6 (33%) 1.4 / 3.8 / 2.7 (66%) 2.1 / 5.5 / 2.6 (100%)	1.3 / 3.4 / 2.6 (33%) 2.6 / 7.0 / 2.7 (66%) 3.9 / 10.1 / 2.6 (100%)	2.6 / 7.3 / 2.8 (33%) 4.1 / 16.4 / 4.0 (66%) 5.8 / 16.2 / 2.8 (100%)	
A12 / W50	0.9 / 2.9 / 3.2 (33%) 1.5 / 4.6 / 3.3 (66%) 2.3 / 7.4 / 3.2 (100%)	1.4 / 5.0 / 3.6 (33%) 2.7 / 10.0 / 3.7 (66%) 4.1 / 14.8 / 3.6 (100%)	2.8 / 10.9 / 3.9 (33%) 4.1 / 16.4 / 4.0 (66%) 6.0 / 25.4 / 3.9 (100%)	
A35 / W12 (EER)	1.2 / 4.6 / 3.8 (66%) 2.0 / 6.9 / 3.5 (100%)	2.0 / 8.0 / 4.0 (66%) 2.8 / 10.9 / 3.9 (100%)	3.6 / 14.8 / 4.1 (66%) 6.0 / 22.2 / 3.7 (100%)	
Aanvoer		230/50/1+N	230/50/1+N	400/50/3+N
Operationele limieten		15 rps - 120 rps	15 rps - 120 rps	15 rps - 100 rps
Koelmiddel		R410a	R410a	R410a
Geluidsniveau		55 dB (A)	58 dB (A)	62 dB (A)
Geluidsdruk bij 1 m		47 dB (A)	50 dB (A)	54 dB (A)