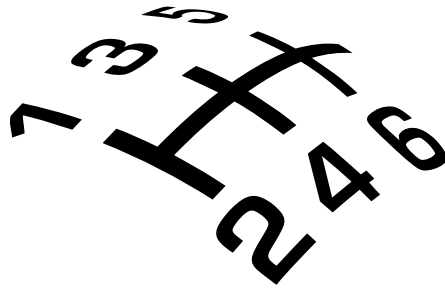


®

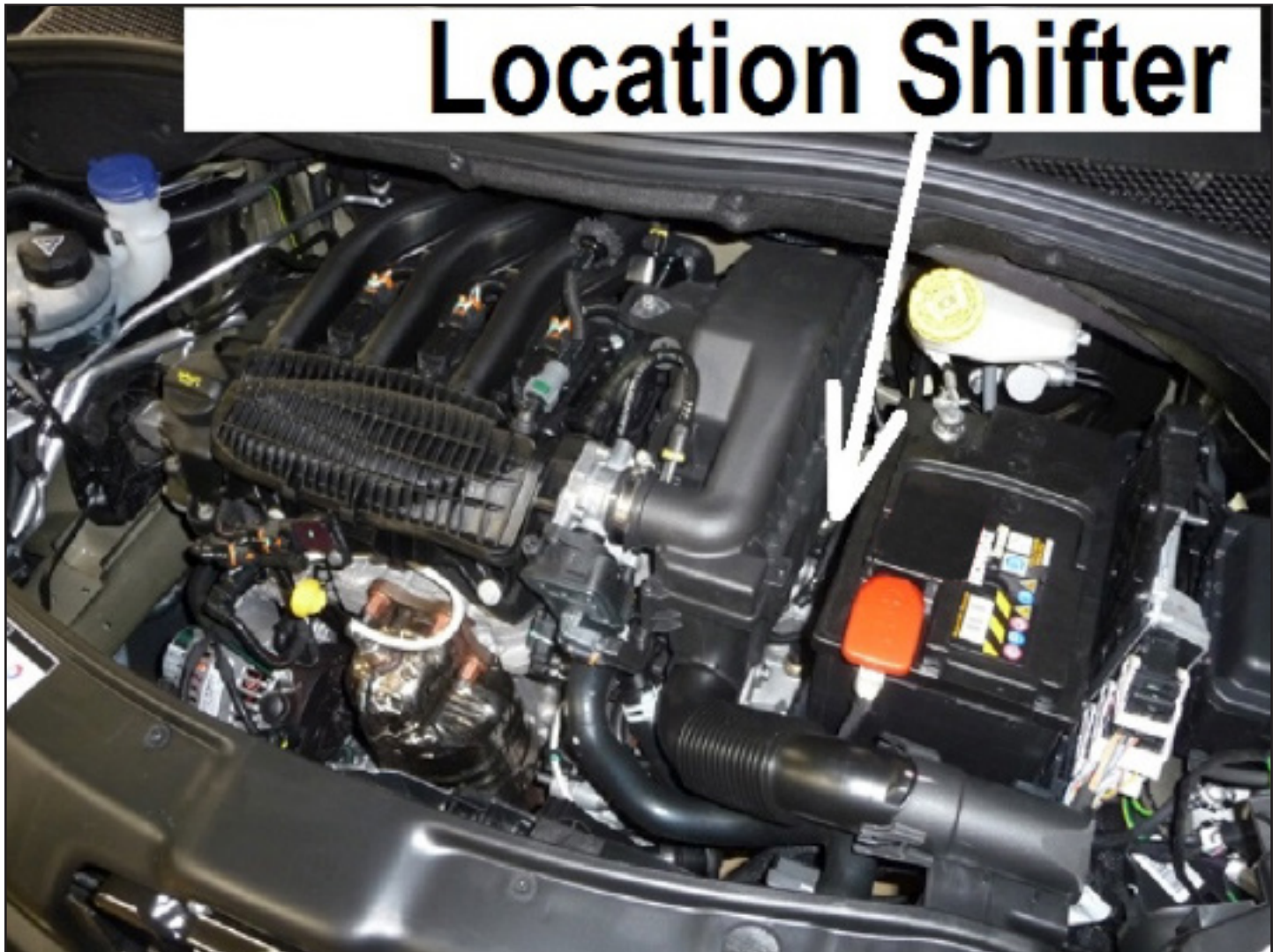


SHORT-SHIFTERS.COM

4H-TECH Short Shifters. **Power shifters for quicker and shorter gear changes**

Fitting guide for 4H-Tech MA-Shift Short Shifter.

This guide shows the fitting of a 4H-Tech MA-Shift on a Peugeot 208 1.2L Petrol.
The fitting on other cars (Citroën) and other engine types (1.4L and 1.6L) is pretty much the same.



Remove air cleaner housing as follow:



SHORT-SHIFTERS.COM





SHORT-SHIFTERS.COM



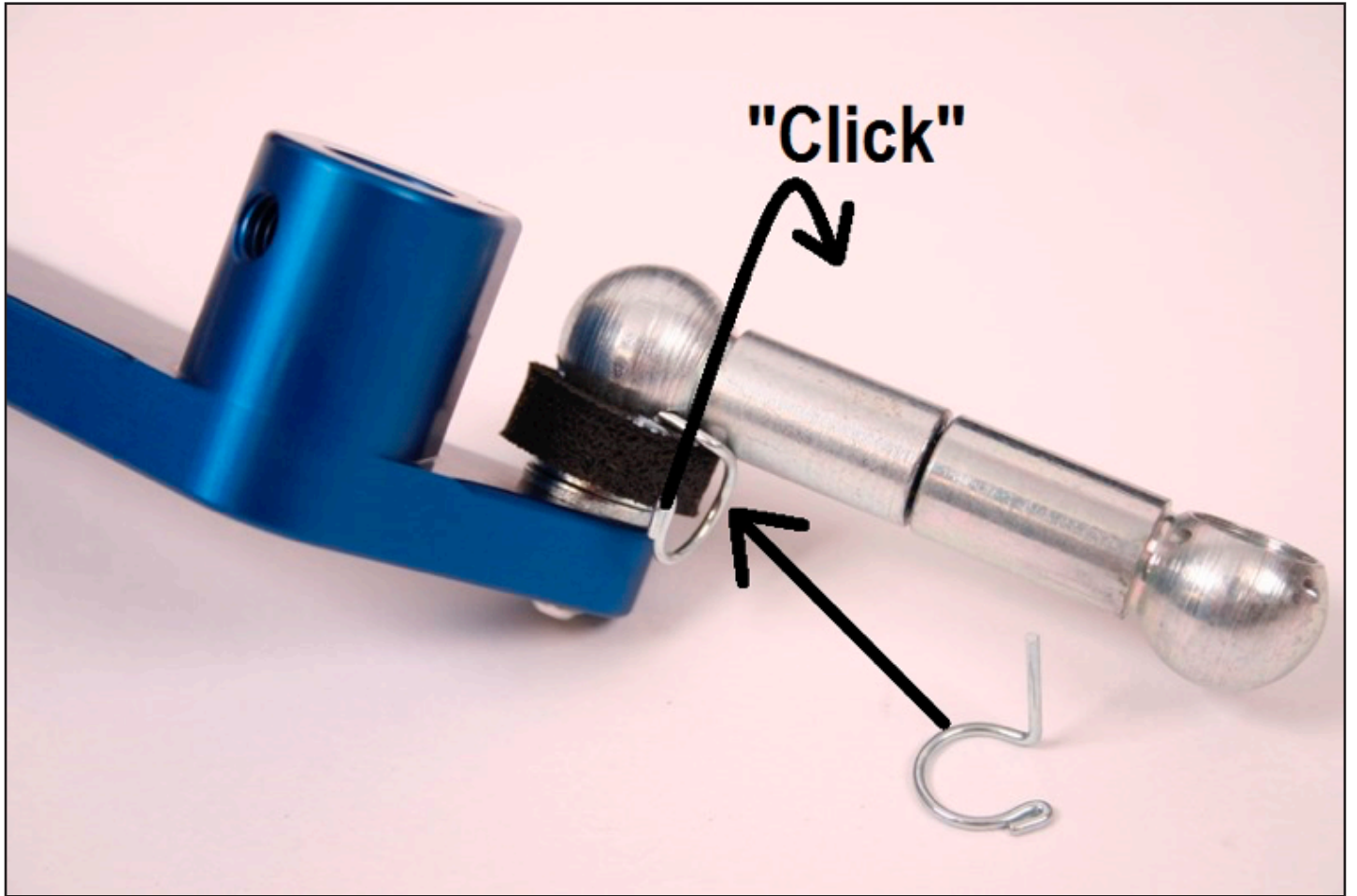


SHORT-SHIFTERS.COM





SHORT-SHIFTERS.COM



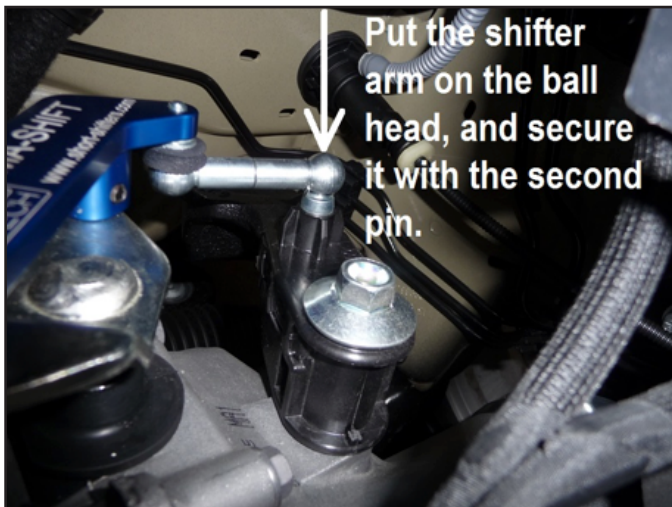


SHORT-SHIFTERS.COM

Push MA-Shift on the oem shifter



Put the shifter arm on the ball head, and secure it with the second pin.



Tighten the 2 screws. And click the cable on the ballhead





SHORT-SHIFTERS.COM



Fit everything back in the car (air cleaner)

Check if all gears can be engaged, and take the car for a test drive.

35% shorter gear throw.

Now your car shifts like a racecar, but always remember to be safe and don't get overly excited on the public roads out there.



PROTECTED DESIGN! This Short Shifter is 100% developed, tested and produced by 4H-Tech®, and is protected under international copyright, trademark and other laws.