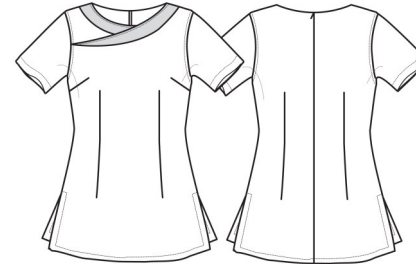


PR691

'IVY' BEAUTY AND SPA TUNIC

CARTON	PACK	NO. SKU'S
12	3	40



Colour	Pantone	C	M	Y	K
Black	0	0	0	0	100
Hot Pink	214c	0	100	24	4
Purple	269	82	98	5	26
Strawberry	186	2	100	82	6
Turquoise	312	89	0	11	0

Fabric

100% Polyester Plain weave with, 'Inherent stretch capabilities', 185gsm

Colours

Black with Hot Pink, Black with Purple, Black with Turquoise,

Sizes

6, 8, 10, 12, 14,16, 18, 20, 22, 24

Features

- Beauty and Spa tunic with Panel detail
- Black contrast panel detail around front neck line
- Princess seams and bust darts for flattering fit
- Side vents
- Back zip fastening
- Short sleeves
- Easycare
- Made from OEKO-TEX® Standard 100 Fabric

Country of Origin

China

Carton Dimensions

60 cm x 44 cm x 17 cm

Carton Weight

6.20 kg approx.

VAT Code

6211 43 1000

Size	6	8	10	12	14	16	18	20	22	24
Bust to fit "	31	33	35	37	39	41	43	45	47	49
Bust to fit cm	79	84	89	94	99	104	109	114	119	124
Call size	2XS	XS	S	M	L	XL	2XL	3XL	4XL	5XL
Bust actual cm	89	94	99	104	109	114	120	126	132	138
DE,NL	34	36	38	40	42	44	46	48	50	52
FR,ES,PT	34	36	38	40	42	44	46	48	50	52
IT	38	40	42	44	46	48	50	52	54	56

Marketing Description

The 'Ivy' beauty and spa tunic offers a flattering v-shape across the shoulders and collar lines. The v-shape is enhanced by a deep coloured trim of Hot Pink, Turquoise, Purple or Strawberry Red and looks great against the main black body of the tunic



WASH DARK COLOURS SEPARATELY