

PR605

'DAISY' HEALTHCARE TUNIC

CARTON	PACK	NO. SKU'S
24	4	36

**Fabric**

65%/35%, Polyester/ Cotton Twill, 195gsm

Colours

Lilac/White, Navy/White, Royal/White, White/Navy

Sizes

8, 10, 12, 14, 16, 18, 20, 22, 24

Features

- Healthcare Tunic
- V-Neck with contrast trims
- Covered front zip fastening
- Covered popper fastening above zip
- Side and back pleats for fitted styling
- Curved side pockets with contrast piped edge

Country of Origin

Bangladesh

Carton Dimensions

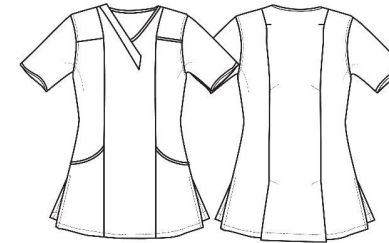
41cm x 60cm x 24cm

Carton Weight

10.80 kg approx.

VAT Code

6211 43 1000



Colour	Pantone	C	M	Y	K
Lilac	264	27	30	0	0
Navy Blue	2766	100	87	0	34
Royal Blue	286	100	60	0	6
White	White	0	0	0	0

Size	8	10	12	14	16	18	20	22	24
Chest actual "	37	39	41	43	45	47	49	52	54
Chest actual cm	94	99	104	109	114	120	126	132	138
Chest to fit cm	81	86	91	97	102	107	112	117	122
Call size	XS	S	M	L	XL	2XL	3XL	4XL	5XL
EU Size	36	38	40	42	44	46	48	50	52

Marketing Description

A practical and very stylish addition to our healthcare range, the 'Daisy' Tunic offers a V-neck styling with contrast trimming. Designed with a feminine fit in mind, the 'Daisy' features side and back pleats and a useful curved side pockets, again featuring a piped contrast edging.



INDUSTRIAL LAUNDERING 85°C MAXIMUM