

KARIBAN

REFERENCE : K601

NAME :

SIZES : XS_S_M_L_XL_XXL_3XL_4XL

COMPOSITION :

Main fabric : Polyamide 36 100%polyamide
 Padding : Duck down and feather 90/10 90/10 white duck
 down S=167G - L=188G 90%duck down/10%duck feather

WEIGHT :

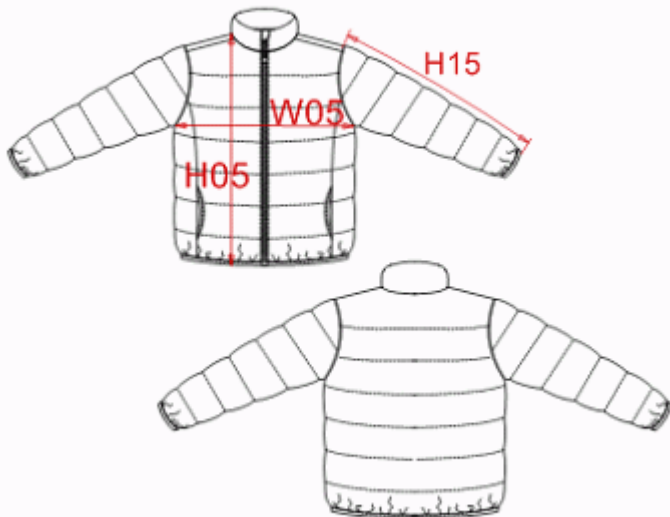
Main fabric : 36 gsm
 Padding : S=109G - L=126G

FABRIC CONSTRUCTION AND FINISHING :

Down proof coating

COLORS	PANTONE SERIGRAPHIE
Black / Black	Black / Black
Navy / Navy	2965C / 2965C
Red / Black	186C / Black
Light royal blue / Black	7686C / Black
Lime / Black	375C / Black

DESCRIPTION	
Français :	Doudoune duvet ultra-légère
English :	Ultra light Puffa jacket
Nederlands :	
Deutsch :	ULTRA LEICHTE DAUNENJACKE
Español :	CHAQUETA DE PLUMÓN ULTRALIGERA
Italiano :	GIACCA ULTRA LEGGERA
Português :	Blusão acolchoado



MEASUREMENT										
Description	XS	S	M	L	XL	XXL	3XL	4XL		
H05 Hauteur totale terminée/ Total height after sewing	68,40	70,30	72,10	74	76	77,80	79,70	82,40		
W05 1/2 largeur poitrine terminée/ 1/2 chest width after sewing	54,90	57,85	60,75	63,70	66,70	69,70	72,50	76,40		
H15 Longueur manche / Sleeve length	65,50	67	68,90	70,75	72,70	74,75	76,50	78,70		

PACKING	
Box	5 pcs / box XS-L => L:60cm W:42cm H:22cm GW:3.00kg NW:1.80kg XL-4XL => L:72cm W:46cm H:22cm GW:3.40kg NW:2.00kg

CARE LABEL				