

Innovations 2008



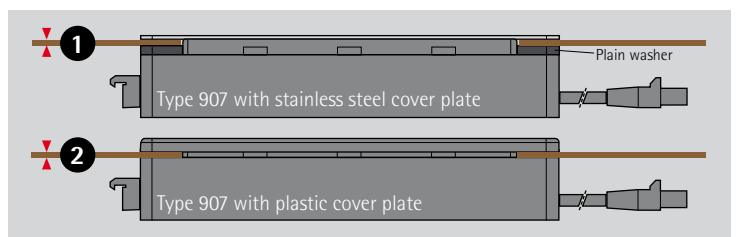
**EV0line<sup>®</sup>**  
**Express Data**



## EVoline® Express Data

3 power sockets VDE, 2 certified data connections, CAT 5e or CAT 6 (Reichle & De-Massari). Data cable including plug produced to customer requirements. Power connection Wieland GST 18 plug connection. Can be combined with all EVoline® Express security and switch modules. Flame-resistant plastic. Silver-plated contacts provide lower resistance. Able to be loaded with 16 Ampere for high performance. Insert cover plate in black or made of solid, stainless steel. Also available without data connections. Simple elegance offering high functionality. Design for the value-for-money basis fittings of your electronic workplace.

EVoline® – the e-place design



Installation dimensions 175 mm x 54 mm,

- ❶ max. material thickness 7 mm  
(Standard scope of supply with underlay plate for 2.5 mm material thickness)
- ❷ max. material thickness 2.5 mm

# EVoline® Express Data



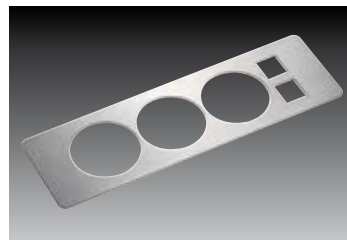
## EVoline® Express Data

3-fold power socket strip type 907  
Germany, Austria 2)  
with plug GST 18 and two telephone/data  
sockets RJ45  
(Reichle & De-Massari)

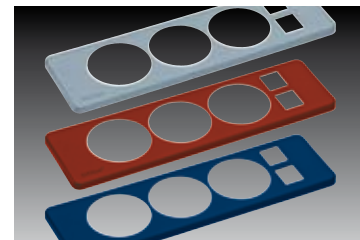
Cover plate: Made of black plastic or  
stainless steel or plastic in RAL colours  
on request.



Black plastic cover plate



Stainless steel cover plate, also available in  
other dimensions\*



Plastic cover plate available in  
all RAL colours\*

\*Minimum order quantity  
100 pieces

[www.schulte.com](http://www.schulte.com)

Schulte Elektrotechnik  
GmbH & Co. KG

P.O. Box 2732/2708  
D-58477 Lüdenscheid

Jüngerstraße 21  
D-58515 Lüdenscheid

Phone +49 (0) 23 51 / 94 81-0  
Fax +49 (0) 23 51 / 4 26 58  
e-mail [info@schulte.com](mailto:info@schulte.com)

[www.schulte.com](http://www.schulte.com)