

## TECHNICAL DATA SHEET

# Ref. 500023

## UNIPOLAR BATTERY

## MASTER SWITCH

## 24VDC / 100A



### GENERAL CHARACTERISTICS

Protection degree: IP63  
Ambient temperature: -40°C to +85°C  
Weight: 0.222 Kg approx.  
Contacts: Copper  
Connections: not polarized

### FIELDS OF APPLICATION

Handling vehicles, industrial vehicles,  
agriculture machinery, industry...

### POWER CIRCUIT

Connection: M10 terminals  
Tightening torque: 1.5 +/- 0.1 daN·m  
Type: D1 normally open  
Nominal current: 100 A  
Nominal voltage: 24 VDC  
Max. capacity: 500 A during 5 seconds

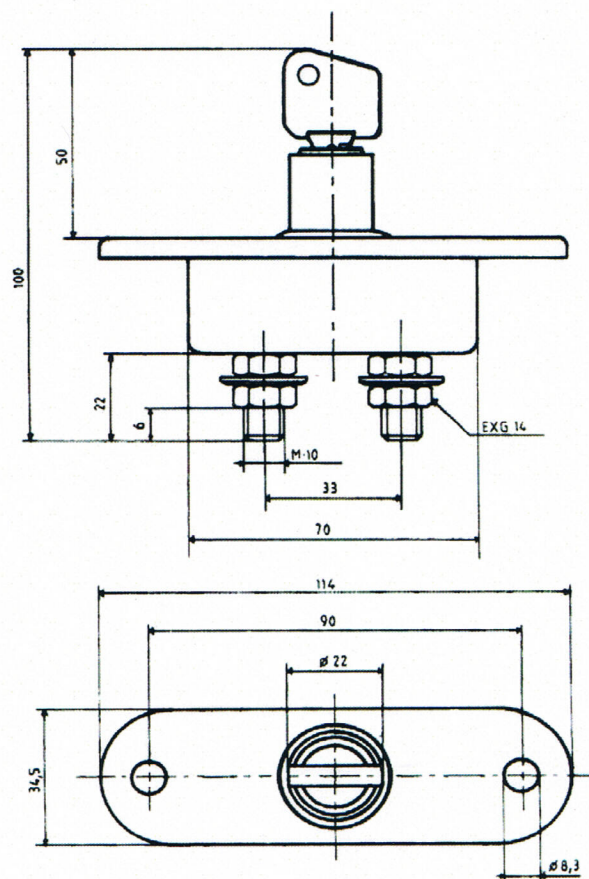
### PARTICULAR CHARACTERISTICS:

Security key control

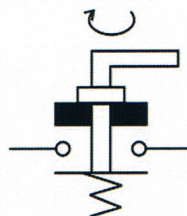
### SPARE PARTS

Key 520000

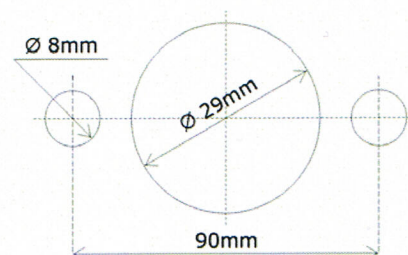
### Size diagrams



### Connection diagram



### Fixing diagram



P.I. EL RAÏQUER, C/ EL RAÏQUER, s/N, NAVE Nº21-22  
08170 MONTORNÈS DEL VALLÈS  
BARCELONA (SPAIN)  
TEL. : + 34.93.544.44.80 - FAX : + 34.93.544.44.90  
[WWW.CORMAR.ES](http://WWW.CORMAR.ES) - [INFO@CORMAR.ES](mailto:INFO@CORMAR.ES)